

Estadistics for June/2017

July 1, 2017

Arina

In this brief document we show the usage of arina during June. This month 71016 computing days where used and the the average use of the cluster was 127 %. Since the first of December 378796 computing days where used and the the average use of the Arina cluster was 90 %. The figure shows the usage of Arina along the month. In the first table the usage of each user is shown. The third column indicates all the time each user has used for calculation during this month. The fourth column shows the average time that each job was waiting before the it started running, in days units. In the second table, the same data as in table 1 collected by group is shown.

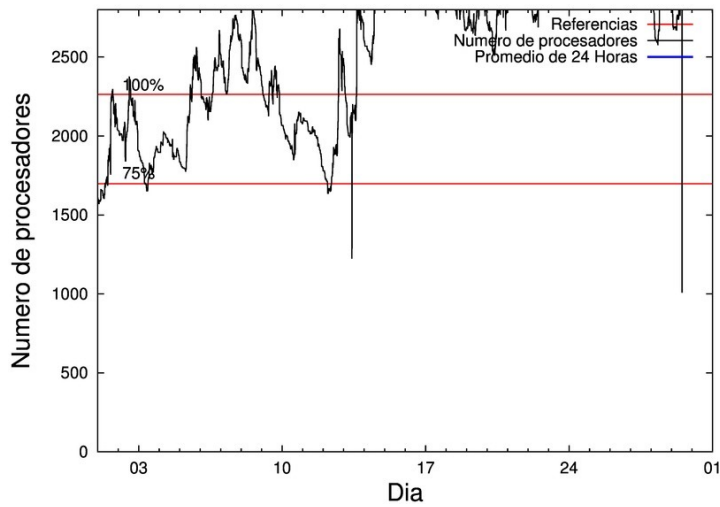


Figure 1: Cluster use. The blue line is a 24 hours average.

Table 1: Calculated time and waiting time in days of the users.

USER	GROUP	Calculated Days	Waiting Time
naagagaa	nanogune	21797.82	0.12
povrucif	polymat	7288.01	0.07
kiadadag	pojuu	5732.86	0.04
povhehea	poahh	5101.29	0.08
kixgrazr	potmb	3476.83	0.10
poanacuj	polymat	2929.01	0.03
doxcarei	poemg	2335.49	0.12
poblairo	poxlp	2185.80	0.00
qovzaxxr	polymat	2045.25	0.20
enxcacaj	egune	1981.35	0.05
pobmugoj	pomps	1598.59	0.01
poaganau	polymat	1242.81	0.08
enblairo	egune	1080.71	0.21
wavototm	waaap	848.91	0.02
enxararo	egune	762.64	0.01
upetralanda001	wdaga	758.63	0.07
wmpetali	wdaga	747.89	0.04
dixsasam	pojuu	741.57	0.11
kiasomal	qocpn	737.65	0.00
qopgobee	qocpn	639.39	0.00
poamaxg	polymat	632.66	0.03
qobsalae	qambm	621.65	0.00
pobmabej	potmb	598.31	0.00
fibblrem	waaap	473.55	0.01
pobrease	potmb	430.10	0.00
scavinam	poemg	403.03	0.00
deaguura	nmage	362.32	0.19
povmieci	pojuu	358.09	0.01
faaatnaa	faraz	351.43	0.00
poalocad	polymat	300.90	0.01
qfpmamoh	qfila	281.91	0.06
quvvalom	qfjfg	272.31	0.00
quxtaxxs	polymat	232.49	0.05
kiaurbao	poxlp	223.28	0.45
qoaarecl	qofcm	214.94	0.00
kibderua	qofcm	212.03	0.00
quxmarur	qfjfg	159.87	0.00
qfacaarm	qfila	108.12	0.00
quamasal	qfjfg	101.69	0.01
poagupej	pojuu	101.45	0.00
poersai	poxlp	99.42	0.00
pobgrgrs	pomps	84.99	0.00
juranga004	potmb	68.36	0.00
scpridei	qofcm	46.75	0.00
poarloi	pojuu	35.90	0.00
vcpviirg	vcnor	33.59	0.21
acplaing	jiads	27.08	0.00

poairurm	pojoo	21.38	0.01
jipiloga	jiads	19.31	0.11
quaasanm	qfjfg	15.95	0.00
favecvep	qfjfg	12.15	0.00
pobromam	pomps	9.66	0.05
qobgotxh	qocpn	9.29	0.00
kixsasal	pojoo	9.13	0.00
qobgomui	qocpn	8.60	0.00
bgpmafea	bgjal	8.38	0.00
qfjbaprij	qfila	8.32	0.00
qopcomof	qofcm	5.16	0.00
qfasacaa	qfila	4.94	0.00
wabgaari	waaap	4.47	0.01
qobgoura	qocpn	4.46	0.00
faavzae	qfila	4.17	0.00
wuppobam	wuebp	3.91	0.00
pobmelat	arinadm	2.25	0.00
quaduree	qfila	0.97	0.00
qoparaya	qofcm	0.59	0.00
bibgaetk	biodo	0.54	0.00
wubcavaa	wuash	0.46	0.34
bckmimoj	qfjfg	0.32	0.00
ciazuulm	pojoo	0.31	0.00
bczabgab	casgi	0.09	0.00
kiaolfeb	potss	0.08	0.00
webogare	arinadm	0.06	0.00
sgialesk	sgkae	0.04	0.00
quaqugaj	qfila	0.02	0.00
povpisim	pomps	0.02	0.00
pobfoese	poxlp	0.02	0.00
quainbea	qfjfg	0.00	0.00
qfbloala	qfjfg	0.00	0.00
bgpmuhoi	bcnsc	0.00	0.00

Table 2: Calculated time and waiting time in days of the groups.

GROUP	Calculated Days	Waiting Time
nanogune	21797.82	0.12
polymat	14671.12	0.04
pojoo	7000.69	0.06
poahh	5101.29	0.08
potmb	4573.61	0.03
egune	3824.71	0.18
poemg	2738.51	0.07
poxlp	2508.52	0.13
pomps	1693.26	0.03
wdaga	1506.52	0.04
qocpn	1399.39	0.00
waaap	1326.93	0.01
qambm	621.65	0.00
qjfg	562.29	0.00
qofcm	479.48	0.00
qfila	408.46	0.00
nmage	362.32	0.19
faraz	351.43	0.00
jiads	46.39	0.01
vcnor	33.59	0.21
bgjal	8.38	0.00
wuebp	3.91	0.00
arinadm	2.31	0.00
biodo	0.54	0.00
wuash	0.46	0.34
casgi	0.09	0.00
potss	0.08	0.00
sgkae	0.04	0.00
bcnsc	0.00	0.00

Arina Data Storage Top Users

In the following graph we plot the users having more data in Arina in the last month. If you appear in this graph, we strongly encourage you to reduce your data in Arina.

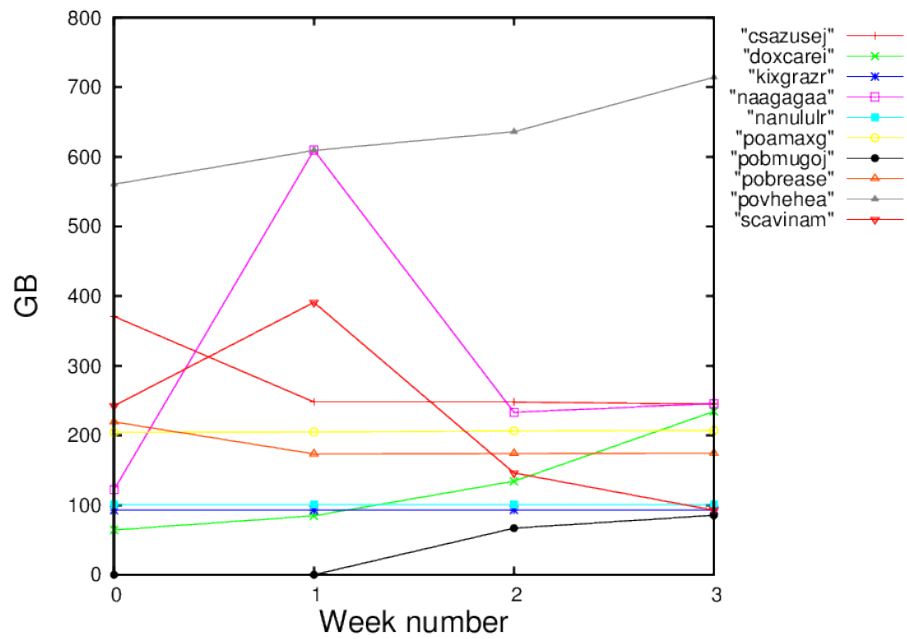


Figure 2: Storage evolution in the last month in GB.