

Estadistics for June/2016

July 5, 2016

Arina

In this brief document we show the usage of arina during June. This month 53430 computing days where used and the the average use of the cluster was 95 %. Since the first of December 360296 computing days where used and the the average use of the Arina cluster was 90 %. The figure shows the usage of Arina along the month. In the first table the usage of each user is shown. The third column indicates all the time each user has used for calculation during this month. The fourth column shows the average time that each job was waiting before the it started running, in days units. In the second table, the same data as in table 1 collected by group is shown.

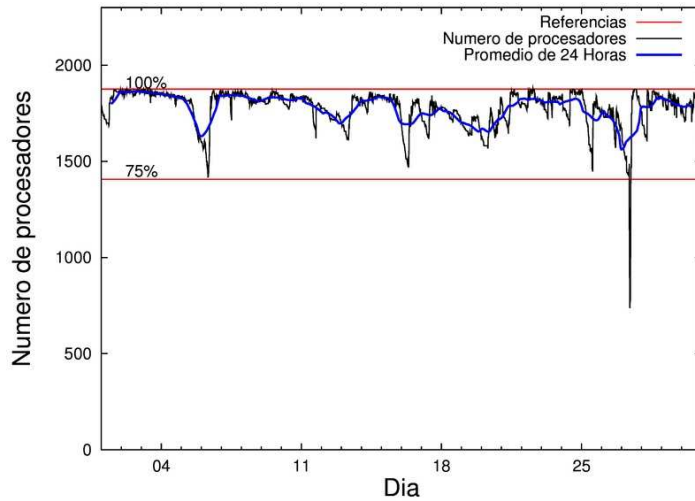


Figure 1: Cluster use. The blue line is a 24 hours average.

Table 1: Calculated time and waiting time in days of the users.

USER	GROUP	Calculated Days	Waiting Time
fabusgui	qfjfg	10629.04	1.83
poamaxg	polymat	8396.78	0.91
povhehea	poahh	6338.47	1.39
enxararo	egune	3519.81	0.50
kivpepor	kirpp	3432.05	0.38
povrucif	polymat	2756.90	0.22
csazusej	nanogune	2151.70	0.48
bckmimoj	qfjfg	1374.78	0.82
gbpbesej	gbavm	1330.30	0.88
pobmabej	potmb	1129.23	0.29
poalocad	polymat	741.96	0.17
faacalea	qfjfg	708.53	0.45
qfbgoroj	qfjfg	695.79	0.25
juranga004	potmb	687.47	0.41
quxmarur	qfjfg	664.60	0.46
quvvalom	qfjfg	643.49	1.02
kiasomal	qocpn	628.09	0.20
poblairo	poxlp	589.82	1.42
pobfoese	poxlp	582.18	0.21
ggplaarj	ggmer	531.86	0.23
oraruori	polymat	509.88	0.73
pobrease	potmb	500.73	0.54
doxcarei	poxlp	480.86	0.40
pobcacad	pojju	455.90	0.18
qopgobee	qocpn	454.47	0.04
kixgrazr	potmb	446.64	0.36
pobmugoj	pomps	411.08	0.19
pobgrgrs	pomps	390.55	0.13
kiadadag	pojju	313.76	0.19
popugurj	pojju	284.78	1.13
qfpmamoh	qfila	217.53	0.12
qovzaxxr	polymat	212.41	0.24
anpgaetk	anjbc	178.38	0.39
navdesad	nanopeji	177.00	0.08
qoaarecl	qofcm	164.16	0.05
sckwankm	waars	114.91	0.02
kibderua	qofcm	103.23	0.03
poplopex	pojju	86.80	0.08
kiarorom	poxlp	83.45	0.06
quainbea	qfjfg	81.49	0.16
qopcomof	qofcm	49.10	0.02
faaatnaa	faraz	31.44	0.76
kiaurbao	poxlp	29.13	0.06
qfjbaprj	qfila	19.22	0.01
quaurhei	qfjfg	17.97	0.50
wubcavaa	wuash	16.59	0.14
dixsasam	pojju	12.71	0.01

quxlegoa	qfjfg	9.00	0.03
favecvep	qfjfg	7.25	0.88
webogare	arinadm	6.00	0.02
kixsasal	pojju	5.69	0.30
qoparaya	qofcm	5.44	0.00
mapmemam	qtftp	5.27	0.04
qfbleoni	qfjfg	4.00	0.00
qfpmamav	qfila	3.18	0.00
qoaarecl	egune	2.98	0.74
nanululr	nanogune	2.68	0.05
pobmelat	arinadm	2.10	0.04
paslobej	pajlb	0.40	0.03
poasobas	pojju	0.06	0.02
wepgopej	wejcm	0.00	0.00

Table 2: Calculated time and waiting time in days of the groups.

GROUP	Calculated Days	Waiting Time
qfjfg	14835.93	1.12
polymat	12617.94	0.24
poahh	6338.47	1.39
egune	3522.79	0.50
kirpp	3432.05	0.38
potmb	2764.07	0.39
nanogune	2154.38	0.46
poxlp	1765.44	0.26
gbavm	1330.30	0.88
pojju	1159.69	0.16
qocpn	1082.56	0.10
pomps	801.63	0.15
ggmer	531.86	0.23
qofcm	321.92	0.03
qfila	239.93	0.03
anjbc	178.38	0.39
nanopeji	177.00	0.08
waars	114.91	0.02
faraz	31.44	0.76
wuash	16.59	0.14
arinadm	8.11	0.04
qtftp	5.27	0.04
pajlb	0.40	0.03
wejcm	0.00	0.00

Arina Data Storage Top Users

In the following graph we plot the users having more data in Arina in the last month. If you appear in this graph, we strongly encourage you to reduce your data in Arina.

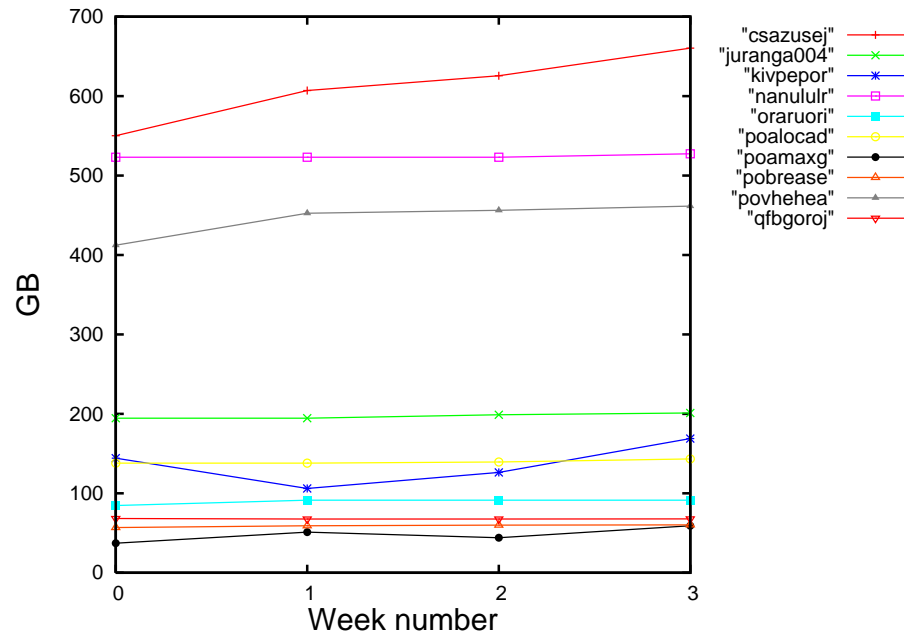


Figure 2: Storage evolution in the last month in GB.