

Estadistics for June/2015

July 1, 2015

Arina

In this brief document we show the usage of arina during June. This month 45334 computing days where used and the the average use of the cluster was 81 %. Since the first of December 341947 computing days where used and the the average use of the Arina cluster was 86 %. The figure shows the usage of Arina along the month. In the first table the usage of each user is shown. The third column indicates all the time each user has used for calculation during this month. The fourth column shows the average time that each job was waiting before the it started running, in days units. In the second table, the same data as in table 1 collected by group is shown.

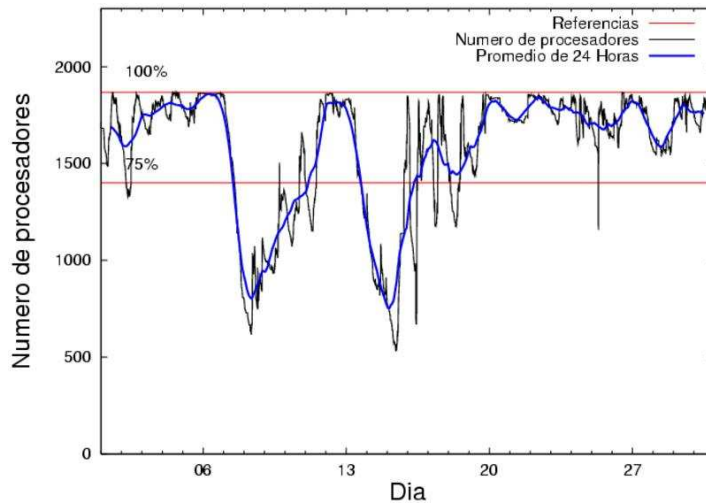


Figure 1: Cluster use. The blue line is a 24 hours average.

Table 1: Calculated time and waiting time in days of the users.

USER	GROUP	Calculated Days	Waiting Time
poamaxg	polymat	9713.68	1.15
povpisim	pomps	4166.87	0.93
fabusgui	qfjfg	3966.18	0.10
bckmimoj	qfjfg	3773.36	0.36
qfbgoroj	qfjfg	3070.37	0.36
kivpepor	kirpp	2133.08	0.13
csazusej	nanogune	1876.70	0.20
kixgrazr	potmb	1669.13	0.03
pobrease	potmb	1667.23	0.16
poalocad	polymat	1638.05	0.16
ciaazapj	poxlp	1085.93	0.09
kibderua	qofcm	1056.07	0.01
qopgobee	qocpn	1023.11	0.02
pobmugoj	pomps	1018.63	0.05
juranga004	potmb	957.34	0.06
pobgrgs	pomps	692.72	0.06
povhehea	poahh	667.31	0.10
pobmabej	potmb	602.26	0.17
qovzaxxr	polymat	566.72	0.40
povrucif	polymat	454.04	0.05
pobfoese	poxlp	397.72	0.02
kiaolfeb	qocpn	392.08	0.01
bixbrdem	gbdga	355.90	0.04
favcopee	qfjfg	355.63	0.47
poanacuj	polymat	251.07	0.02
kiaurbao	poxlp	211.66	0.05
nanululr	nanogune	210.01	0.49
mapmemam	qtftp	208.53	0.12
kixsasal	pojju	159.27	0.20
poblairo	poxlp	139.64	0.67
mtpmafel	mtgfa	117.34	0.18
pmarkaide001	ggmer	105.99	0.09
upetralanda001	wdaga	96.80	0.06
pobcacad	pojju	86.73	0.10
anpgaetk	anjbc	65.99	0.09
mapalmau	qtftp	61.93	0.42
pmarkaide001	arinadm	47.11	0.00
gbbsaeur	gbdga	42.56	0.18
quxlegoa	qfjfg	37.91	0.00
qoprualg	qofpg	33.31	0.00
popugurj	pojju	33.21	0.03
qfpmamoh	qfila	32.82	0.01
weaaromam	weaga	30.43	0.06
qobmimuj	lgsgi	20.88	0.01
webogare	arinadm	15.51	0.00
weacoexl	weaga	8.56	0.03
qfxaldad	qflp	7.45	0.00

qopcomof	qofcm	6.85	0.00
qfpesmai	qfila	0.94	0.01
pobmelat	arinadm	0.86	0.00
pobromam	pomps	0.28	0.01
sckwankm	waars	0.22	0.01
qobffib	qocpn	0.22	0.01
povracoe	pomps	0.01	0.00
sipmulij	sipeo	0.00	0.00
poplopex	pojuu	0.00	0.00
gepalgoi	geaaa	0.00	0.04

Table 2: Calculated time and waiting time in days of the groups.

GROUP	Calculated Days	Waiting Time
polymat	12623.56	0.30
qfjfg	11203.45	0.35
pomps	5878.51	0.16
potmb	4895.97	0.09
kirpp	2133.08	0.13
nanogune	2086.70	0.22
poxlp	1834.96	0.06
qocpn	1415.41	0.01
qofcm	1062.91	0.01
poahh	667.31	0.10
gbdga	398.46	0.05
pojuu	279.21	0.13
qtftp	270.46	0.21
mtgfa	117.34	0.18
ggmer	105.99	0.09
wdaga	96.80	0.06
anjbc	65.99	0.09
arinadm	63.47	0.00
weaga	38.98	0.05
qfila	33.77	0.01
qofpg	33.31	0.00
lgsgi	20.88	0.01
qflp	7.45	0.00
waars	0.22	0.01
sipeo	0.00	0.00
geaaa	0.00	0.04

Arina Data Storage Top Users

In the following graph we plot the users having more data in Arina in the last month. If you appear in this graph, we strongly encourage you to reduce your data in Arina.

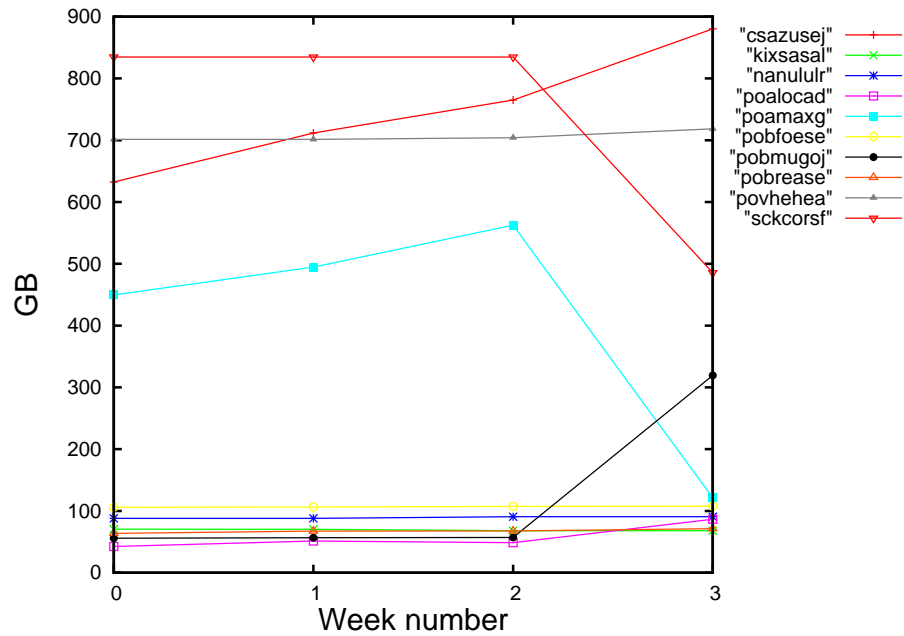


Figure 2: Storage evolution in the last month in GB.

Péndulo

This month 12 computing days were used in **Péndulo** and the the average use of the cluster was 0 %. Since the first of December computing days were used and the the average use of the cluster was %. The figure shows the usage of Péndulo along the month. In the first table the usage of each user is shown. The third column indicates all the time each user has used for calculation during this month. The fourth column shows the average time that each job was waiting before the it started running, in days units. In the second table, the same data as in table 1 collected by group is shown.

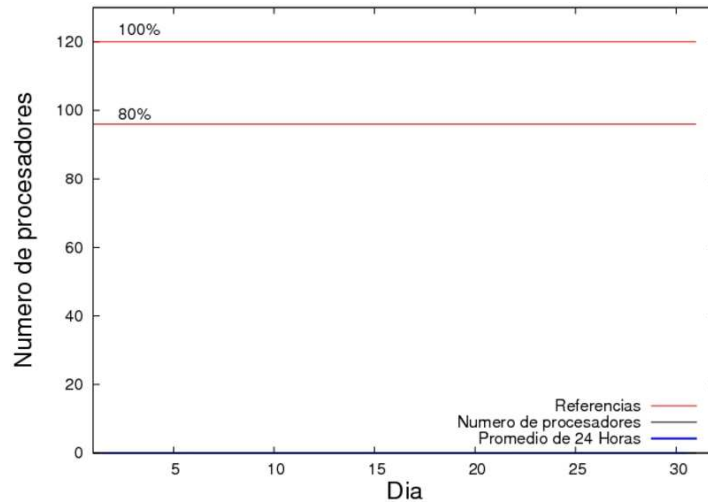


Figure 3: Cluster use. The blue line is a 24 hours average.

Table 3: Calculated time and waiting time in days of the users.

USER	GROUP	Calculated Days	Waiting Time
------	-------	-----------------	--------------

Table 4: Calculated time and waiting time in days of the groups.

GROUP	Calculated Days	Waiting Time
-------	-----------------	--------------