

# Estadistics for June/2014

July 1, 2014

## Arina

In this brief document we show the usage of arina during June. This month 35003 computing days were used and the the average use of the cluster was 92 %. Since the first of December 262365 computing days were used and the the average use of the Arina cluster was 95 %. The figure shows the usage of Arina along the month. In the first table the usage of each user is shown. The third column indicates all the time each user has used for calculation during this month. The fourth column shows the average time that each job was waiting before the it started running, in days units. In the second table, the same data as in table 1 collected by group is shown.

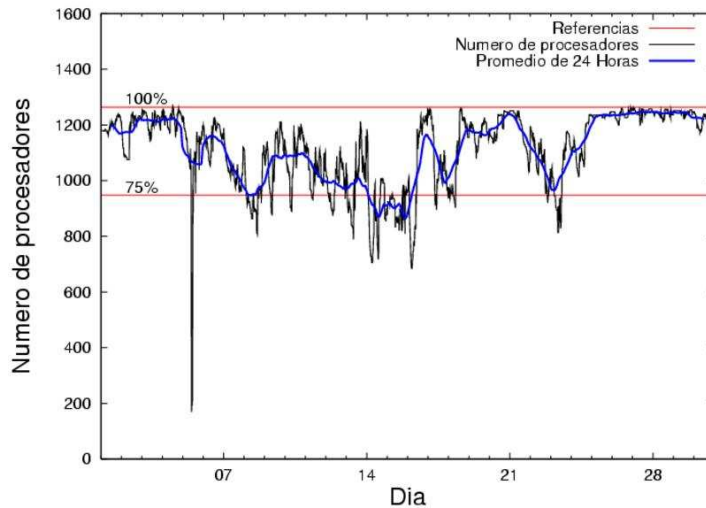


Figure 1: Cluster use. The blue line is a 24 hours average.

Table 1: Calculated time and waiting time in days of the users.

USER	GROUP	Calculated Days	Waiting Time
csazusej	nanogune	6186.98	0.59
popugurj	pojoo	3585.93	0.61
povhehea	poahh	3566.30	0.11
poblauro	poxlp	2860.01	0.03
sckcorsf	nanogune	2603.31	0.50
povrucif	polymat	2542.46	0.06
pobmugoj	pomps	2084.77	0.18
poplopex	pojoo	1788.78	0.24
favecvep	qfjfg	1158.12	0.61
qopgobee	qocpn	864.66	0.02
pobgrgrs	pomps	732.71	0.05
nanululr	nanogune	694.74	1.09
ciaazapj	poxlp	640.90	0.13
qobmimuj	lgsgi	613.31	1.07
pobrease	pojoo	572.70	0.03
pobfoese	poxlp	556.68	0.04
povwawaj	pojoo	478.99	0.38
favcopee	qfjfg	474.13	0.28
pobinini	poxlp	394.20	0.04
kibderua	qofcm	376.03	0.02
qovzaxxr	qorzz	322.80	0.36
qoaarecl	qofcm	286.66	0.02
sgkluqun	poxlp	281.46	0.05
pobrease	potmb	228.83	0.00
inpesalg	injbi	214.99	0.00
acplaing	jiads	174.57	0.04
povpisim	pomps	152.34	0.15
qoblaago	qorzz	135.97	0.06
kixbebej	poxlp	122.47	0.15
qobsalae	qambm	91.31	0.01
bavfepem	pojoo	67.45	0.03
qfbgoroj	qfjfg	48.85	0.01
gaazareg	injss	32.45	0.13
juranga004	potmb	21.12	0.04
scpzuola	qorzz	20.32	0.00
qfbbaprj	qfila	13.33	0.00
mapmemam	qtftp	4.46	0.13
mtpmafel	mtgfa	3.07	0.00
qfbbloala	qfala	1.46	0.06
qopcomof	qofcm	1.15	0.00
qfbbesmai	qfila	1.14	0.00
pobmelat	arinadm	0.62	0.00
webogare	arinadm	0.42	0.00
wuppobam	wuebp	0.35	0.06
fabusgui	qfjfg	0.31	0.00
bbpremae	bbdbu	0.19	0.14
quxlegoa	qfjfg	0.10	0.00

sckwankm	waars	0.03	0.00
naaalcaa	nanopeji	0.00	0.13

---

Table 2: Calculated time and waiting time in days of the groups.

GROUP	Calculated Days	Waiting Time
nanogune	9485.03	0.55
pojoo	6493.85	0.22
poxlp	4855.72	0.06
poahh	3566.30	0.11
pomps	2969.82	0.14
polymat	2542.46	0.06
qfjfg	1681.52	0.28
qocpn	864.66	0.02
qofcm	663.84	0.02
lgsgi	613.31	1.07
qorzz	479.08	0.06
potmb	249.96	0.01
injbi	214.99	0.00
jiads	174.57	0.04
qambm	91.31	0.01
injss	32.45	0.13
qfila	14.47	0.00
qtftp	4.46	0.13
mtgfa	3.07	0.00
qfala	1.46	0.06
arinadm	1.03	0.00
wuebp	0.35	0.06
bcdbu	0.19	0.14
waars	0.03	0.00
nanopeji	0.00	0.13

---

## Arina Data Storage Top Users

In the following graph we plot the users having more data in Arina in the last month. If you appear in this graph, we strongly encourage you to reduce your data in Arina.

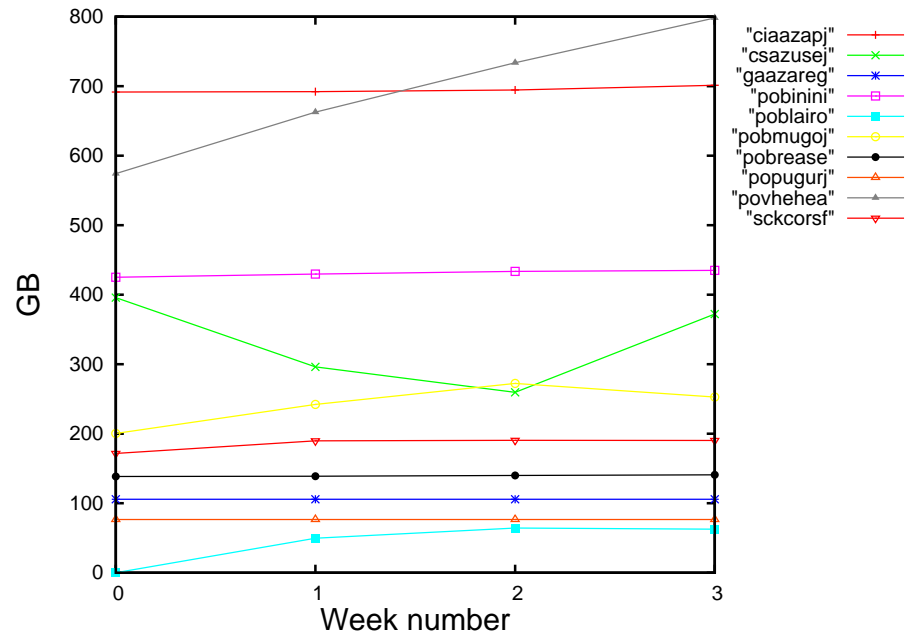


Figure 2: Storage evolution in the last month in GB.

## Péndulo

This month 625 computing days were used in **Péndulo** and the the average use of the cluster was 29 %. Since the first of December 5175 computing days were used and the the average use of the cluster was 30 %. The figure shows the usage of Péndulo along the month. In the first table the usage of each user is shown. The third column indicates all the time each user has used for calculation during this month. The fourth column shows the average time that each job was waiting before the it started running, in days units. In the second table, the same data as in table 1 collected by group is shown.

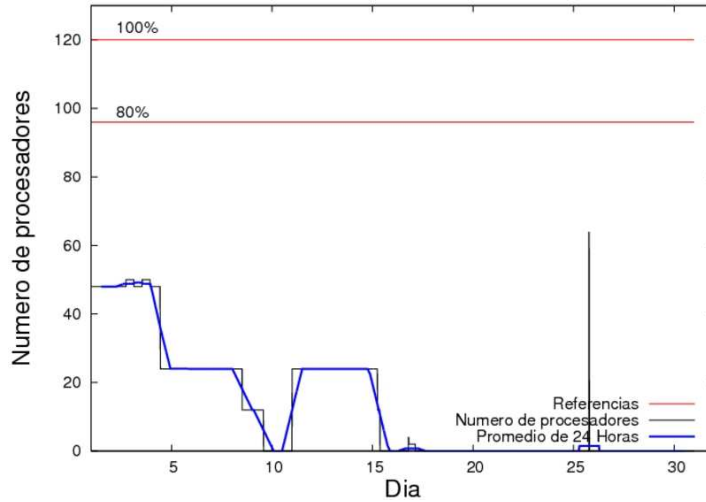


Figure 3: Cluster use. The blue line is a 24 hours average.

Table 3: Calculated time and waiting time in days of the users.

USER	GROUP	Calculated Days	Waiting Time
poblaire	poxlp	501.79	0.00
qovzaxxr	qofcm	118.81	0.00
jtpprugg	jtjob	4.25	0.00

Table 4: Calculated time and waiting time in days of the groups.

GROUP	Calculated Days	Waiting Time
poxlp	501.79	0.00
qofcm	118.81	0.00
jtjob	4.25	0.00