

Estadistics for June/2012

July 19, 2012

Arina

In this brief document we show the usage of arina during June. This month 28066 computing days where used and the the average use of the cluster was 67 %. Since the first of December 208991 computing days where used and the the average use of the cluster was 71 %. The figure shows the usage of Arina along the month. In the first table the usage of each user is shown. The third column indicates all the time each user has used for calculation during this month. The fourth column shows the average time that each job was waiting before the it started running, in days units. In the second table, the same data as in table 1 collected by group is shown.

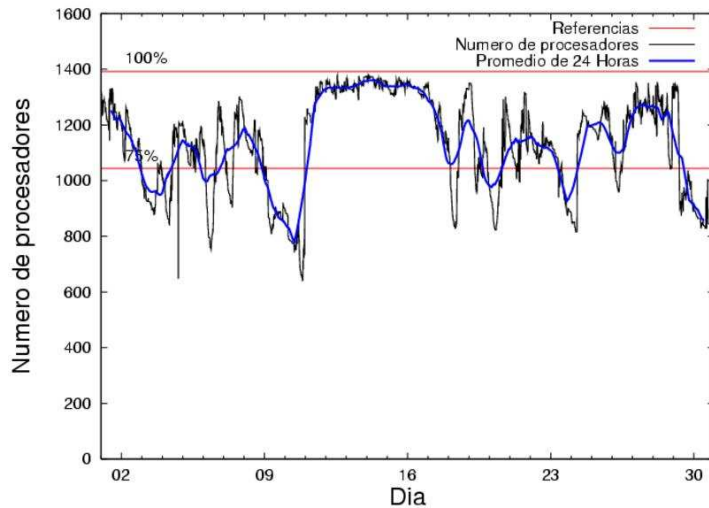


Figure 1: Cluster use. The blue line is a 24 hours average.

Table 1: Calculated time and waiting time in days of the users.

USER	GROUP	Calculated Days	Waiting Time
favcopee	qfjfg	5907.08	1.04
povwawaj	pojju	3626.67	0.74
ciaazapj	poxlp	2122.17	0.03
povhehea	poahh	2112.73	0.15
sckcorsf	nanogune	1559.64	0.08
kibmeheg	pojju	1086.33	0.05
pobgrgrs	pojju	956.66	0.01
qopgobee	qocpn	837.84	0.02
qoaarecl	qofcm	771.28	0.08
pobmugoj	pojju	731.48	0.07
poalolog	poxlp	718.95	0.36
csazusej	nanogune	692.51	0.07
pobrease	potss	621.91	0.16
mapmemam	qtftp	530.39	0.11
qoparaya	qofcm	490.87	0.02
pobinini	pojju	476.85	0.00
popugurj	pojju	457.22	0.18
mapalmau	qtftp	387.55	0.10
scpzuola	qorzz	374.40	0.27
pobrease	pojju	373.28	0.20
qfploarf	qfila	359.58	0.04
qfpmamoh	qfila	350.02	0.04
kibderua	qofcm	349.65	0.04
bcpremae	bcdbu	343.97	0.16
wmbgavem	waets	314.74	0.03
quxlegoa	qfjfg	278.74	0.22
povrucif	poxlp	218.61	0.07
bckmimoj	qfjfg	148.21	0.15
kiazuirx	waets	145.27	0.14
meppesag	qtftp	141.63	0.04
nabzezem	nanogune	81.68	0.13
cixesesb	poxlp	68.05	0.04
favecvep	qfjfg	63.98	0.54
kibpapaa	qorzz	51.72	0.04
poplopex	pojju	46.06	0.01
qfbbaprj	qfila	40.71	0.02
sgpfemae	gpucomp	38.96	0.06
poblairo	poxlp	34.57	0.22
bcpitaia	bcizb	24.54	0.13
bcklogoi	inffi	24.02	0.02
wapesnuv	wakgg	19.44	0.00
inpbailj	injbi	15.86	0.00
pobmabej	pojju	12.98	0.07
quxbabai	qfjfg	12.41	0.01
wuppobam	wuebp	8.50	0.01
qfpesmai	qfila	7.96	0.00
qfpgapae	qfegp	5.23	0.00

qopcomof	qofcm	4.44	0.00
wapgoesj	wakgg	4.37	0.01
acblonou	ccjla	4.34	0.08
webogare	arinadm	2.83	0.01
lebtobaa	leaie	2.29	0.05
qoprualg	qofpg	1.81	0.11
jtpanlod	jtjob	1.78	0.00
iapgarue	iaegr	0.85	0.00
wabpepaa	waars	0.36	0.04
wabgalaj	waars	0.01	0.02
kixmagre	poxlp	0.00	0.00

Table 2: Calculated time and waiting time in days of the groups.

GROUP	Calculated Days	Waiting Time
pojuu	7767.53	0.17
qfjfg	6410.42	0.93
poxlp	3162.36	0.06
nanogune	2333.82	0.12
poahh	2112.73	0.15
qofcm	1616.23	0.04
qtftp	1059.58	0.09
qocpn	837.84	0.02
qfila	758.27	0.02
potss	621.91	0.16
waets	460.01	0.06
qorz	426.11	0.24
bedbu	343.97	0.16
gpucomp	38.96	0.06
bcizb	24.54	0.13
infi	24.02	0.02
wakgg	23.81	0.01
injbi	15.86	0.00
wuebp	8.50	0.01
qfegp	5.23	0.00
ccjla	4.34	0.08
arinadm	2.83	0.01
leaie	2.29	0.05
qofpg	1.81	0.11
jtjob	1.78	0.00
iaegr	0.85	0.00
waars	0.37	0.03

Pendolo

This month 81 computing days were used in **Pendolo** and the the average use of the cluster was 4 %. Since the first of December 648 computing days were used and the the average use of the cluster was 4 %. The figure shows the usage of Pendolo along the month. In the first table the usage of each user is shown. The third column indicates all the time each user has used for calculation during this month. The fourth column shows the average time that each job was waiting before the it started running, in days units. In the second table, the same data as in table 1 collected by group is shown.

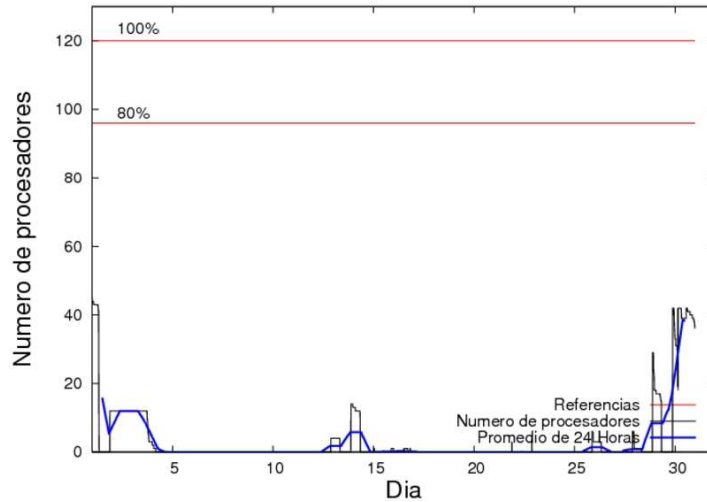


Figure 2: Cluster use. The blue line is a 24 hours average.

Table 3: Calculated time and waiting time in days of the users.

USER	GROUP	Calculated Days	Waiting Time
jtpanlod	jtjob	74.05	0.85
mtpmafel	mtgfa	4.59	0.21
jtppragg	jtjob	3.33	0.08
webogare	arinadm	0.04	0.00

Table 4: Calculated time and waiting time in days of the groups.

GROUP	Calculated Days	Waiting Time
jtjob	77.39	0.82
mtgfa	4.59	0.21
arinadm	0.04	0.00

Ikerbasque machine

The service has access to 208 xeon cores in this machine, which are older than Arina's ones. The codes of only few big users are maintained there to optimize the maintenance time. This month 3470 computing days were used in **Ikerbasque** machine and the the average use of the cluster was 56 %. Since the first of December 18655 computing days were used and the the average use of the cluster was 42 %. In the first table the usage of each user is shown. The third column indicates all the time each user has used for calculation during this month. The fourth column shows the average time that each job was waiting before the it started running, in days units. In the second table, the same data as in table 1 collected by group is shown.

Table 5: Calculated time and waiting time in days of the users.

USER	GROUP	Calculated Days	Waiting Time
pobmugoj	pojuu	3467.63	0.00
pobmelat	arinadm	2.53	0.00

Table 6: Calculated time and waiting time in days of the groups.

GROUP	Calculated Days	Waiting Time
pojuu	3467.63	0.00
arinadm	2.52	0.00