

Estadistics for June/2011

July 5, 2011

Arina

In this brief document we show the usage of arina during June. This month 21262 computing days where used and the the average use of the cluster was 94 %. Since the first of December 127130 computing days where used and the the average use of the cluster was 80 %. The figure shows the usage of Arina along the month. In the first table the usage of each user is shown. The third column indicates all the time each user has used for calculation during this month. The fourth column shows the average time that each job was waiting before the it started running, in days units. In the second table, the same data as in table 1 collected by group is shown.

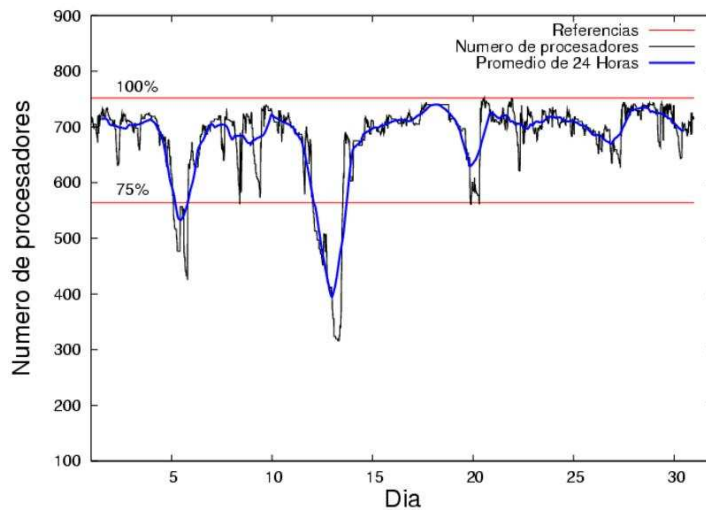


Figure 1: Cluster use. The blue line is a 24 hours average.

Table 1: Calculated time and waiting time in days of the users.

USER	GROUP	Calculated Days	Waiting Time
povhehea	poahh	5648.45	0.74
pobrease	potss	2306.73	1.00
wmbgavem	waets	2205.81	0.54
scpzuola	qorzz	1656.94	0.60
povwawaj	pojuu	1583.14	0.21
pobmugoj	pojuu	733.24	0.14
waptctce	waets	647.94	0.10
qovzaxxr	qorzz	645.03	0.85
qopgobee	qocpn	632.74	0.11
qfbleoni	qffca	568.19	0.44
pobrease	pojuu	523.51	0.86
ciaazapj	poxlp	521.84	0.13
kibderua	qofcm	517.67	0.10
quxlegoa	qfjfg	431.00	0.38
qoaarecl	qofcm	345.53	0.23
pobmelat	arinadm	272.43	0.07
pobgrgrs	pojuu	264.26	0.04
quxbabai	qfjfg	260.73	0.07
jipzasib	jieab	190.42	0.17
favecvcp	qfjfg	190.34	0.55
wabeslel	waars	181.70	0.09
poblairo	poxlp	160.99	0.15
favcopee	qfjfg	147.85	0.28
povrucif	poxlp	136.00	0.06
wmpetali	wdaga	102.65	0.29
bckmimoj	qfjfg	72.13	0.19
qopcomof	qofcm	65.69	0.06
kivremey	qpjag	62.75	0.09
bcpdiaro	zoicu	41.34	0.15
waxpoxxy	waars	39.37	0.17
kixmagre	poxlp	28.64	0.02
bcpcacaa	mimam	17.35	0.03
iapgarue	iaegr	10.99	0.03
qobmimuj	lgsgi	10.39	0.04
pobinini	pojuu	5.86	0.00
iqpagura	iqaaau	5.82	0.02
webzucaa	wenzu	5.40	0.04
upetralanda001	wdaga	4.30	0.08
bcpremae	bcdbu	4.17	0.00
wapgoesj	wajge	3.07	0.00
webogare	arinadm	2.53	0.01
mapalmau	magps	2.21	0.00
ggpzamai	ggmer	1.41	0.15
qfjbaprr	qfila	0.83	0.10
qoparaya	qofcm	0.78	0.05
poalolog	poxlp	0.75	0.08
qfptogaa	qflp	0.54	0.00

qoprualg	qofpg	0.40	0.07
wuppobam	wuebp	0.29	0.00
bcpmamza	qfjvv	0.27	0.01
ccpsoeta	jieab	0.03	0.00
mapmemam	qtftp	0.00	0.00

Table 2: Calculated time and waiting time in days of the groups.

GROUP	Calculated Days	Waiting Time
poahh	5648.45	0.74
pojuu	3110.00	0.29
waets	2853.75	0.35
potss	2306.73	1.00
qorz	2301.97	0.71
qfjfg	1102.05	0.36
qofcm	929.67	0.13
poxlp	848.22	0.11
qocpn	632.74	0.11
qffca	568.19	0.44
arinadm	274.96	0.05
waars	221.07	0.12
jieab	190.45	0.05
wdaga	106.95	0.26
qpjag	62.75	0.09
zoicu	41.34	0.15
mimam	17.35	0.03
iaegr	10.99	0.03
lgsgi	10.39	0.04
iqaau	5.82	0.02
wenzu	5.40	0.04
bcdbu	4.17	0.00
wajge	3.07	0.00
magps	2.21	0.00
ggmer	1.41	0.15
qfila	0.83	0.10
qflp	0.54	0.00
qofpg	0.40	0.07
wuebp	0.29	0.00
qfjvv	0.27	0.01
qtftp	0.00	0.00

Pendolo

This month 551 computing days were used in **Pendolo** and the the average use of the cluster was 26 %. Since the first of December 3472 computing days were used and the the average use of the cluster was 20 %. The figure shows the usage of Pendolo along the month. In the first table the usage of each user is shown. The third column indicates all the time each user has used for calculation during this month. The fourth column shows the average time that each job was waiting before the it started running, in days units. In the second table, the same data as in table 1 collected by group is shown.

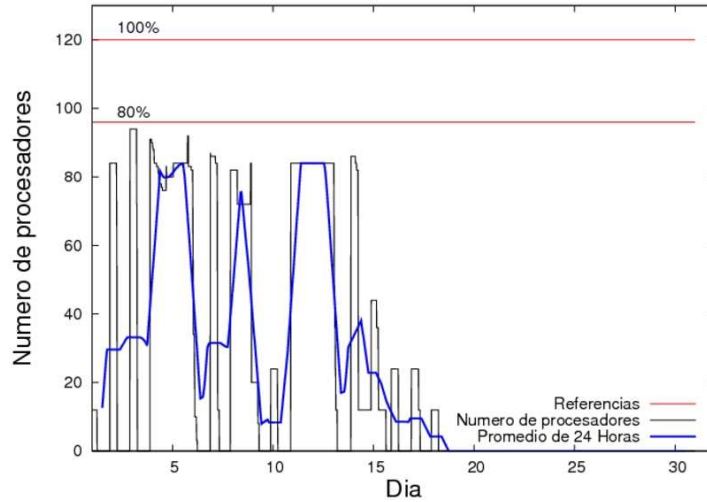


Figure 2: Cluster use. The blue line is a 24 hours average.

Table 3: Calculated time and waiting time in days of the users.

USER	GROUP	Calculated Days	Waiting Time
qovzaxxr	qofcm	520.94	3.30
jtppragg	jtjob	29.61	1.83

Table 4: Calculated time and waiting time in days of the groups.

GROUP	Calculated Days	Waiting Time
qofcm	520.94	3.30
jtjob	29.61	1.83