

Estadistics for May/2018

June 1, 2018

Arina

In this brief document we show the usage of arina during May. This month 98709 computing days where used and the the average use of the cluster was 86 %. Since the first of December 539058 computing days where used and the the average use of the Arina cluster was 79 %. The figure shows the usage of Arina along the month. In the first table the usage of each user is shown. The third column indicates all the time each user has used for calculation during this month. The fourth column shows the average time that each job was waiting before the it started running, in days units. In the second table, the same data as in table 1 collected by group is shown.

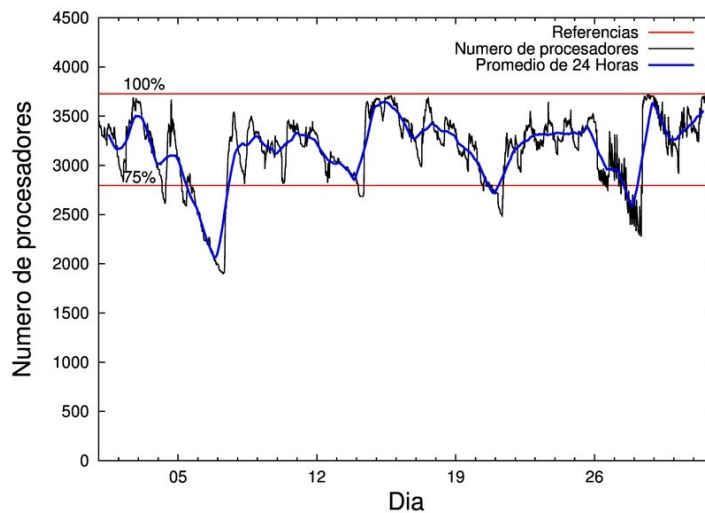


Figure 1: Cluster use. The blue line is a 24 hours average.

Table 1: Calculated time and waiting time in days of the users.

USER	GROUP	Calculated Days	Waiting Time
govzaxxr	polymat	24158.09	0.18
povhehea	poahh	14692.21	1.17
povwawaj	pojoo	10250.61	0.20
poamaxg	polymat	6355.64	0.05
sgibaasj	vgsgi	6034.73	0.17
enxararo	egune	4630.66	0.09
povrucif	polymat	4320.13	0.20
fabusgui	qfjfg	3552.42	0.06
poairurm	polymat	3453.61	0.12
popugurj	pojoo	2195.24	0.03
kiadadag	pojoo	1804.64	0.19
dixsasam	pojoo	1728.21	0.09
pobmugoj	pomps	1497.03	0.01
qopgobee	qocpn	1368.51	0.00
faacalea	qfjfg	1253.91	0.07
pobgrgrs	pomps	1215.37	0.00
quxlegoa	qfjfg	736.09	0.19
poajejec	polymat	726.75	0.02
scavinam	poemg	661.13	1.17
enblairo	egune	589.24	0.02
qobpamap	qocpn	556.16	0.01
poaugbia	pojoo	535.89	0.06
qobzazag	qocpn	520.69	0.00
qfpmamoh	qfila	514.44	0.02
poaorloi	pojoo	504.51	0.01
pobladej	poxlp	499.93	0.00
bcbalesa	bcdmm	486.12	0.00
kiasomal	qocpn	434.87	0.01
pobfoese	poxlp	381.24	0.01
quaqugaj	qfila	293.51	0.00
qfbloala	qfjfg	293.37	0.19
pobmabej	potmb	245.90	0.02
quamearx	qfila	221.52	0.00
enbxilij	egune	216.34	0.32
doxcarei	poemg	207.93	0.01
fablozoj	qfila	198.43	0.00
poalocad	polymat	159.50	0.03
poaganau	polymat	150.83	0.03
qobsalae	qambm	120.35	0.00
kiaurbao	poxlp	115.18	0.01
qoprualg	qofpg	114.06	0.00
poafesaa	pojoo	103.86	0.00
quainbea	qfjfg	99.30	0.07
csazusej	nanogune	85.37	0.01
poaszsze	poxlp	60.60	0.01
kibderua	qofcm	57.99	0.01
mapmemam	megps	56.54	0.31

qfbleoni	qfjfg	53.41	0.00
naaruore	nanogune	43.23	0.06
enbzhzh	egune	40.11	0.04
poainugn	pojoo	23.20	0.00
pobrease	potmb	20.76	0.03
qobconde	qofcm	20.49	0.00
wapgoesj	wakgg	13.16	0.00
favecvcp	qfjfg	10.96	0.02
quarafam	qfjfg	10.09	0.00
poasibrd	poxlp	8.00	0.00
kixgrazr	potmb	7.85	0.03
cixesgos	pojoo	4.41	0.06
kiateanm	qocpn	3.00	0.01
bgpmuhoi	bcnsc	2.78	0.00
ciazuulm	pojoo	0.28	0.01
poatealx	pojoo	0.18	0.00
poaazago	potmb	0.08	0.00
pobsisis	pomps	0.03	0.00
poblairo	poxlp	0.02	0.02
improagj	imfmg	0.01	0.00
webogare	arinadm	0.00	0.00
poagafrm	pojoo	0.00	0.00

Table 2: Calculated time and waiting time in days of the groups.

GROUP	Calculated Days	Waiting Time
polymat	39324.55	0.11
pojoo	17151.04	0.05
poahh	14692.21	1.17
vgsgi	6034.73	0.17
qfjfg	6009.54	0.07
egune	5476.35	0.10
qocpn	2883.23	0.01
pomps	2712.42	0.01
qfila	1227.90	0.00
poxlp	1064.98	0.01
poemg	869.06	1.11
bcdmm	486.12	0.00
potmb	274.58	0.03
nanogune	128.60	0.04
qambm	120.35	0.00
qofpg	114.06	0.00
qofcm	78.47	0.01
megps	56.54	0.31
wakgg	13.16	0.00
bcnsc	2.78	0.00
imfmg	0.01	0.00
arinadm	0.00	0.00

Arina Data Storage Top Users

In the following graph we plot the users having more data in Arina in the last month. If you appear in this graph, we strongly encourage you to reduce your data in Arina.

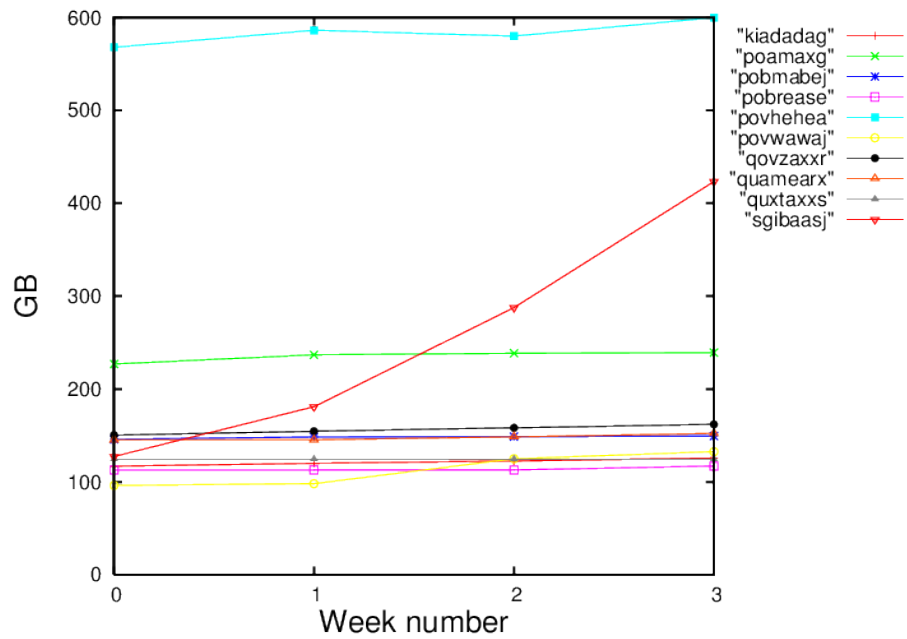


Figure 2: Storage evolution in the last month in GB.