

Estadistics for May/2017

June 1, 2017

Arina

In this brief document we show the usage of arina during May. This month 54419 computing days where used and the the average use of the cluster was 94 %. Since the first of December 309272 computing days where used and the the average use of the Arina cluster was 88 %. The figure shows the usage of Arina along the month. In the first table the usage of each user is shown. The third column indicates all the time each user has used for calculation during this month. The fourth column shows the average time that each job was waiting before the it started running, in days units. In the second table, the same data as in table 1 collected by group is shown.

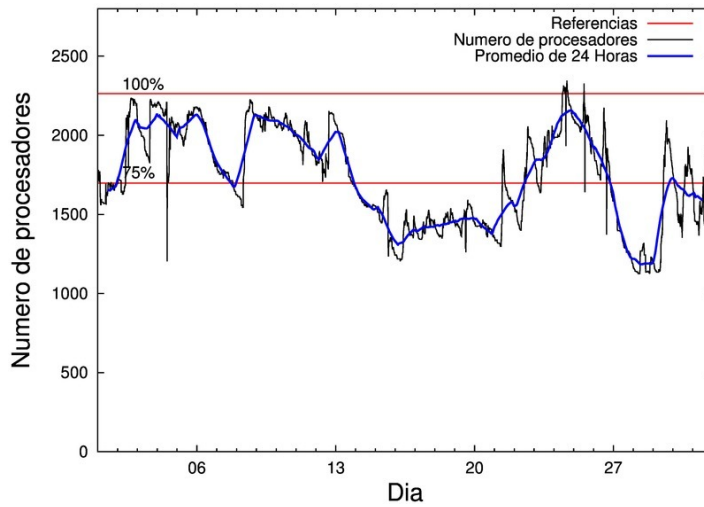


Figure 1: Cluster use. The blue line is a 24 hours average.

Table 1: Calculated time and waiting time in days of the users.

USER	GROUP	Calculated Days	Waiting Time
naagagaa	nanogune	20947.82	4.31
povhehea	poahh	3373.93	0.93
pobmelat	arinadm	2440.55	0.01
povrucif	polymat	2343.23	0.15
qovzaxxr	polymat	2020.56	0.09
poaganau	polymat	1754.96	0.14
kiasomal	qocpn	1440.43	0.05
pobrease	potmb	1438.79	0.27
kiadadag	pojuu	1361.37	0.34
qopgobee	qocpn	1323.05	0.04
poanacuj	polymat	954.80	0.07
qfpmamoh	qfila	895.61	0.03
pobfoese	polymat	805.67	0.06
kibderua	qofcm	792.52	0.10
poalocad	polymat	781.20	0.39
qobsalae	qambm	763.24	0.03
favcopee	qfjfg	731.91	0.81
faacalea	qfjfg	679.53	0.02
poamaxg	polymat	616.22	0.03
enxararo	egune	606.18	0.08
qfbgoroj	qfjfg	600.84	0.03
pobmabej	potmb	536.79	0.05
scavinam	poemg	505.67	0.39
wabgaari	waaap	504.92	0.35
upetralanda001	wdaga	500.61	0.13
pobmugoj	pomps	472.92	0.10
poblairo	poxlp	385.71	0.00
csazusej	nanogune	384.58	3.40
pobgrgrs	pomps	355.42	0.04
quaurhei	qfjfg	347.94	0.22
bgpamloe	mimam	329.99	0.05
wmpetali	wdaga	329.73	0.06
qopcomof	qofcm	319.62	0.02
qoaarecl	qofcm	273.24	0.01
pobrease	polymat	240.05	0.01
kixgrazr	potmb	238.08	0.04
dixsasam	pojuu	228.97	0.03
favecvep	qfjfg	175.94	0.06
fibblrem	waaap	165.59	0.00
doxcarei	poemg	159.50	0.09
bgpmafea	bgjal	155.97	0.04
quxtaxxs	polymat	155.56	0.00
quainbea	qfjfg	147.08	0.05
quvvalom	qfjfg	146.57	0.26
deaguura	nmage	94.83	0.02
scpridei	qofcm	82.31	0.01
juranga004	potmb	60.57	0.02

bgpiznaj	faraz	49.11	0.01
kiaurbao	poxlp	48.23	0.42
qfbleoni	qfjfg	42.52	0.00
poagupej	pojoo	40.88	0.00
qoparaya	qofcm	36.21	0.02
quxmarur	qfjfg	35.95	0.01
ciairaim	poxlp	29.24	0.11
ciazuulm	pojoo	28.39	0.05
faavzae	qfila	20.15	0.00
vcpviirg	vcnor	17.00	0.16
qfasacaa	qfila	15.16	0.01
jipiloga	jiads	14.79	0.67
acplaing	jiads	12.12	0.01
wubcavaa	wuash	11.82	0.19
qfjbaprij	qfila	9.50	0.01
quaqugaj	qfila	7.98	0.02
ciaarmeij	pojoo	6.92	0.02
quamasal	qfjfg	5.49	0.04
wuppobam	wuebp	5.06	0.00
pobfoese	poxlp	4.62	0.03
wepgaara	weaga	3.13	0.12
faaatnaa	faraz	2.30	0.01
kixsasal	pojoo	1.01	0.00
mapmemam	megps	0.68	0.00
wavototm	waaap	0.36	0.00
poarloi	pojoo	0.31	0.00
bczabgab	casgi	0.28	0.00
qfpsimam	qfjmf	0.06	0.00
qfpmamav	qfila	0.01	0.00
improagj	imfmg	0.01	0.00
poplopex	pojoo	0.00	0.05
nanululr	nanogune	0.00	0.00
nabsagrj	nanogune	0.00	0.00
ggamucoa	ggmer	0.00	0.00
bcparlal	megps	0.00	0.00

Table 2: Calculated time and waiting time in days of the groups.

GROUP	Calculated Days	Waiting Time
nanogune	21332.40	4.13
polymat	9672.25	0.31
poahh	3373.93	0.93
qfjfg	2913.77	0.18
qocpn	2763.48	0.04
arinadm	2440.55	0.01
potmb	2274.22	0.08
pojoo	1667.85	0.16
qofcm	1503.90	0.05
qfila	948.41	0.02
wdaga	830.34	0.10
pomps	828.34	0.06
qambm	763.24	0.03
waaap	670.87	0.09
poemg	665.17	0.26
egune	606.18	0.08
poxlp	467.80	0.14
mimam	329.99	0.05
bgjal	155.97	0.04
nmage	94.83	0.02
faraz	51.41	0.01
jiads	26.91	0.11
vcnor	17.00	0.16
wuash	11.82	0.19
wuebp	5.06	0.00
weaga	3.13	0.12
megps	0.68	0.00
casgi	0.28	0.00
qfjmf	0.06	0.00
imfmg	0.01	0.00
ggmer	0.00	0.00

Arina Data Storage Top Users

In the following graph we plot the users having more data in Arina in the last month. If you appear in this graph, we strongly encourage you to reduce your data in Arina.

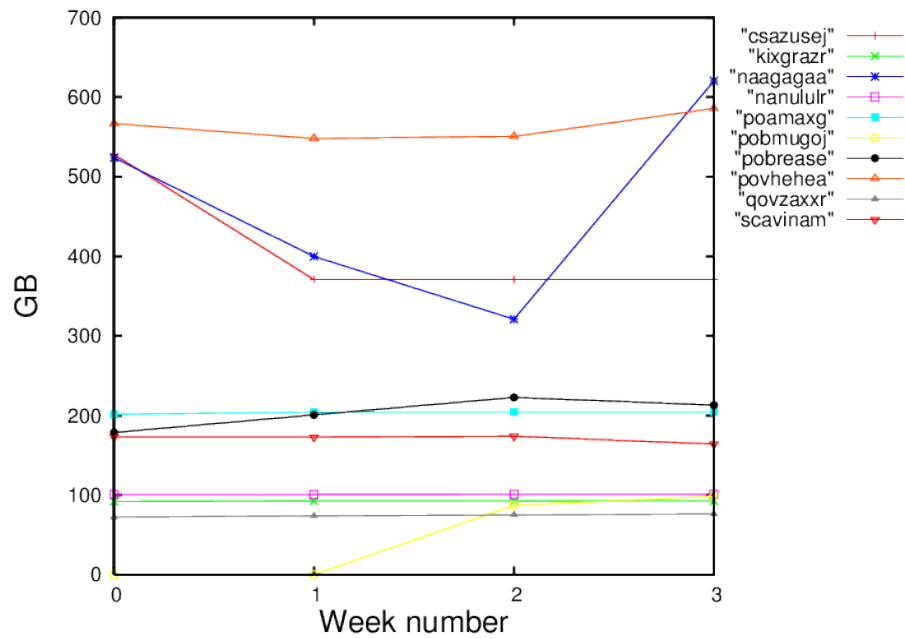


Figure 2: Storage evolution in the last month in GB.