

Estatistics for May/2016

June 29, 2016

Arina

In this brief document we show the usage of arina during May. This month 53876 computing days were used and the the average use of the cluster was 93 %. Since the first of December 307493 computing days were used and the the average use of the Arina cluster was 90 %. The figure shows the usage of Arina along the month. In the first table the usage of each user is shown. The third column indicates all the time each user has used for calculation during this month. The fourth column shows the average time that each job was waiting before the it started running, in days units. In the second table, the same data as in table 1 collected by group is shown.

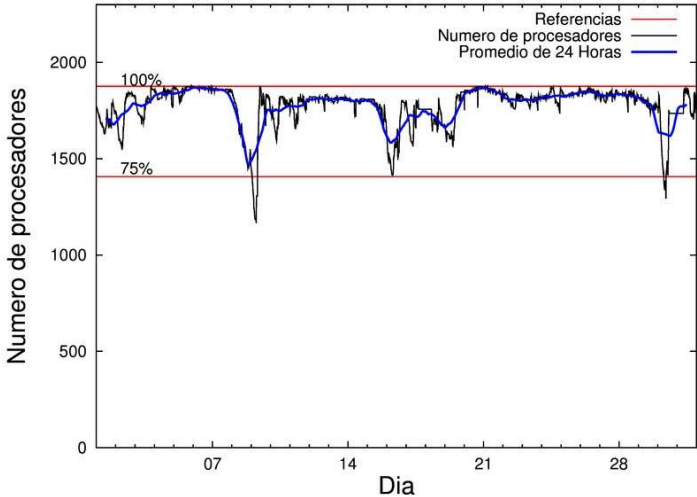


Figure 1: Cluster use. The blue line is a 24 hours average.

Table 1: Calculated time and waiting time in days of the users.

USER	GROUP	Calculated Days	Waiting Time
bckmimoj	qfjfg	7092.26	1.13
qfbgoroj	qfjfg	6522.85	0.85
povhehea	poahh	5969.26	0.39
fabusgui	qfjfg	5063.72	2.35
pobmugoj	pomps	3668.05	0.23
povrucif	polymat	2441.89	0.35
poamaxg	polymat	2355.50	0.89
kiasomal	qocpn	2139.40	0.18
pobfoese	poxlp	1998.84	0.42
qoaarecl	qofcm	1778.38	0.07
faacalea	qfjfg	1643.06	0.28
juranga004	potmb	1188.12	0.23
enxararo	egune	1132.07	0.07
gbpbesej	gbavm	1109.69	0.17
poalocad	polymat	979.61	0.32
kiadadag	pojju	901.72	0.27
poblairo	poxlp	761.01	0.64
qopgobee	qocpn	728.19	0.03
kixgrazr	potmb	686.14	0.08
pobmabej	potmb	602.27	0.14
kivpepor	kirpp	597.60	0.68
csazusej	nanogune	578.66	0.10
kibderua	qofcm	465.48	0.03
pobgrgrs	pomps	395.51	0.09
popugurj	pojju	356.39	1.75
quvvalom	qfjfg	345.59	0.51
favecvep	qfjfg	310.54	0.52
oraruori	polymat	282.89	0.26
pobrease	potmb	254.18	0.82
qobsalae	qambm	251.76	0.02
qopcomof	qofcm	211.86	0.07
pobcacad	pojju	206.58	0.61
quxmarur	qfjfg	141.77	0.40
poarloi	pojju	138.48	0.07
quaurhei	qfjfg	123.20	0.16
kixsasal	pojju	102.76	0.15
kiarorom	poxlp	67.57	0.15
wubcavaa	wuash	64.02	0.11
qfjbaprj	qfila	51.30	0.01
quxlegoa	qfjfg	48.02	0.30
qfpmamoh	qfila	24.24	0.06
enxcacaj	egune	23.90	0.14
wuppobam	wuebp	21.18	0.01
kiaurbao	poxlp	11.83	0.36
mapmemam	qtftp	10.98	0.05
sckwankm	waars	7.71	0.01
qoprualg	qofpg	7.48	0.01

dixsasam	pojuu	6.70	0.03
poplopex	pojuu	5.10	0.01
kiadugat	poxlp	1.29	0.11
anpgaetk	anjbc	0.72	0.05
qoparaya	qofcm	0.71	0.00
pobmelat	arinadm	0.28	0.00
webogare	arinadm	0.21	0.00
qfxaldad	qflp	0.06	0.00
pobrease	polymat	0.04	0.00
doxcarei	poxlp	0.03	0.06
poasobas	pojuu	0.02	0.01
bcpremae	bcdbu	0.00	0.00

Table 2: Calculated time and waiting time in days of the groups.

<u>GROUP</u>	<u>Calculated Days</u>	<u>Waiting Time</u>
qfjfg	21291.01	1.09
polymat	6059.93	0.34
poahh	5969.26	0.39
pomps	4063.57	0.18
qocpn	2867.59	0.10
poxlp	2840.57	0.40
potmb	2730.70	0.25
qofcm	2456.43	0.06
pojuu	1717.74	0.26
egune	1155.97	0.07
gbavm	1109.69	0.17
kirpp	597.60	0.68
nanogune	578.66	0.10
qambm	251.76	0.02
qfila	75.54	0.02
wuash	64.02	0.11
wuebp	21.18	0.01
qtftp	10.98	0.05
waars	7.71	0.01
qofpg	7.48	0.01
anjbc	0.72	0.05
arinadm	0.49	0.00
qflp	0.06	0.00
bcdbu	0.00	0.00

Arina Data Storage Top Users

In the following graph we plot the users having more data in Arina in the last month. If you appear in this graph, we strongly encourage you to reduce your data in Arina.

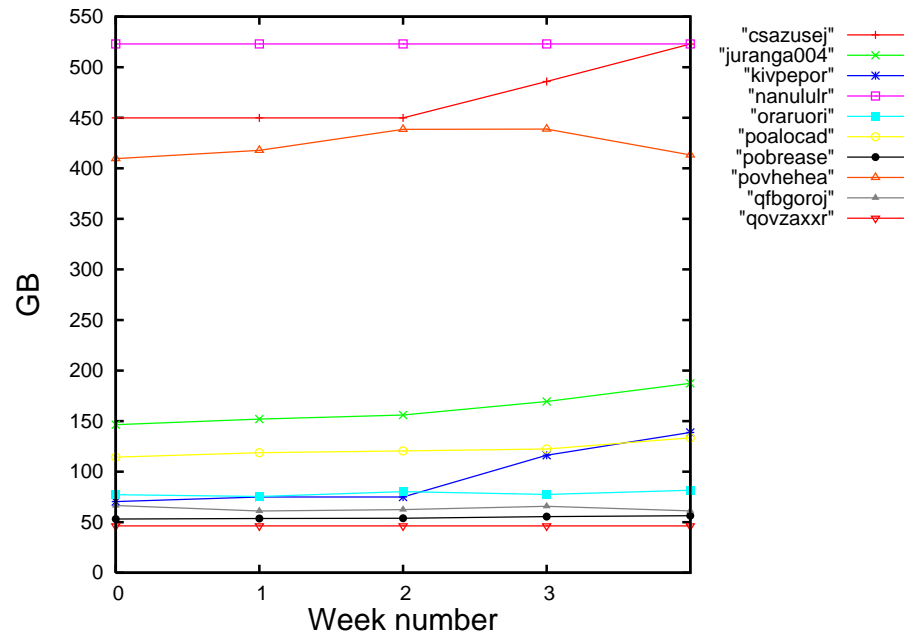


Figure 2: Storage evolution in the last month in GB.