

# Estadistics for May/2015

June 1, 2015

## Arina

In this brief document we show the usage of arina during May. This month 52242 computing days were used and the the average use of the cluster was 90 %. Since the first of December 296542 computing days were used and the the average use of the Arina cluster was 87 %. The figure shows the usage of Arina along the month. In the first table the usage of each user is shown. The third column indicates all the time each user has used for calculation during this month. The fourth column shows the average time that each job was waiting before the it started running, in days units. In the second table, the same data as in table 1 collected by group is shown.

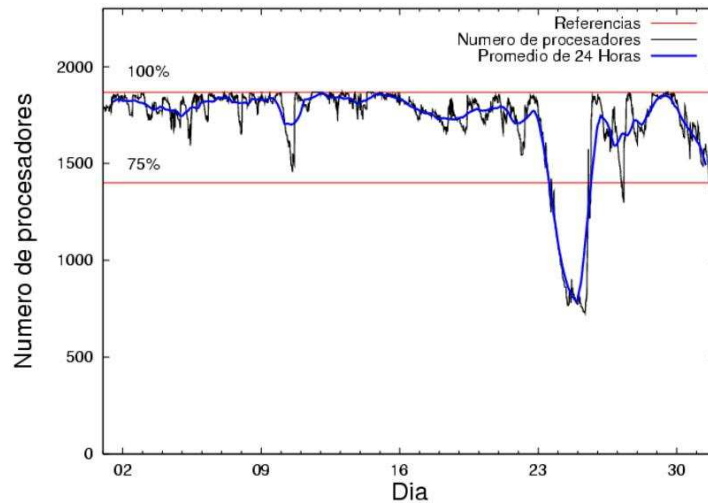


Figure 1: Cluster use. The blue line is a 24 hours average.

Table 1: Calculated time and waiting time in days of the users.

USER	GROUP	Calculated Days	Waiting Time
sckcorsf	nanogune	9433.33	4.13
poamaxg	polymat	5950.48	2.31
fabusgui	qfjfg	5746.50	1.02
povpisim	pomps	4939.09	0.51
pobmabej	potmb	2904.34	0.10
kivpepor	kirpp	2647.09	0.32
juranga004	potmb	2506.22	0.37
pobfoese	poxlp	2344.87	0.04
pobmugoj	pomps	1629.97	0.21
csazusej	nanogune	1397.39	0.21
poalocad	polymat	1324.18	0.12
pobromam	pomps	1289.97	0.59
bckmimoj	qfjfg	1050.17	0.26
pobgrgs	pomps	1021.05	0.12
nanululr	nanogune	1013.52	0.59
povhehea	poahh	869.88	0.93
povrucif	polymat	840.06	0.09
favcopee	qfjfg	741.20	1.03
pobrease	potmb	696.38	0.21
naaalcaa	nanopeji	620.28	0.20
qfbgoroj	qfjfg	487.25	0.16
bixbrdem	gbdga	472.47	0.05
kibderua	qofcm	317.38	0.02
qovzaxxr	polymat	290.88	0.24
qopgobee	qocpn	263.15	0.04
kiasomal	qocpn	244.14	0.14
kixbebej	poxlp	190.26	0.21
qoprualg	qofpg	156.00	0.07
kiaolfeb	qocpn	110.06	0.06
pobmelat	arinadm	101.05	0.00
mapmemam	qtftp	92.33	0.23
poplopex	pojju	86.78	0.01
povracoe	pomps	84.43	0.09
qfpbaprj	qfila	77.56	0.02
upetralanda001	wdaga	63.99	0.09
qfpmamoh	qfila	57.82	0.06
anpgaetk	anjbc	48.53	0.02
mapalmau	qtftp	32.85	0.32
qfxaldad	qflp	26.89	0.01
kixgrazr	potmb	25.85	0.03
qobfifb	qocpn	11.19	0.57
mtpmafel	mtgfa	11.01	0.00
quxlegoa	qfjfg	9.32	0.19
qfbleoni	qfjfg	8.00	0.37
wmpabuf	wmjcd	6.44	0.02
qopcomof	qofcm	4.43	0.05
pmarkaide001	ggmer	4.32	0.00

ciaazapj	poxlp	3.68	0.00
webogare	arinadm	2.03	0.03
wepgaara	weaga	1.39	0.02
kixsasal	pojuu	1.37	0.01
povmieci	pojuu	1.14	0.08
inpdibeg	inagr	0.11	0.00
qfpesmai	qfila	0.03	0.00
qfbmagap	qfila	0.00	0.01
mipdebln	geaaa	0.00	0.00

Table 2: Calculated time and waiting time in days of the groups.

GROUP	Calculated Days	Waiting Time
nanogune	11844.25	3.42
pomps	8964.50	0.36
polymat	8405.61	0.59
qfjfg	8042.46	0.47
potmb	6132.79	0.16
kirpp	2647.09	0.32
poxlp	2538.80	0.06
poahh	869.88	0.93
qocpn	628.54	0.05
nanopeji	620.28	0.20
gbdga	472.47	0.05
qofcm	321.81	0.03
qofpg	156.00	0.07
qfila	135.41	0.04
qtftp	125.18	0.24
arinadm	103.08	0.02
pojuu	89.29	0.02
wdaga	63.99	0.09
anjbc	48.53	0.02
qflp	26.89	0.01
mtgfa	11.01	0.00
wmjcd	6.44	0.02
ggmer	4.32	0.00
weaga	1.39	0.02
inagr	0.11	0.00
geaaa	0.00	0.00

## Arina Data Storage Top Users

In the following graph we plot the users having more data in Arina in the last month. If you appear in this graph, we strongly encourage you to reduce your data in Arina.

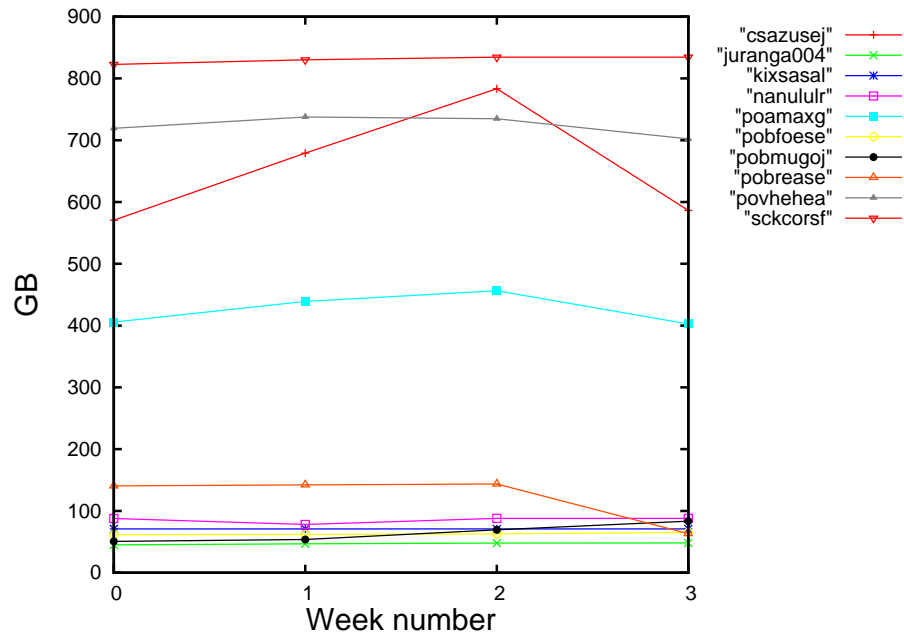


Figure 2: Storage evolution in the last month in GB.

## Péndulo

This month 12 computing days were used in **Péndulo** and the the average use of the cluster was 0 %. Since the first of December computing days were used and the the average use of the cluster was %. The figure shows the usage of Péndulo along the month. In the first table the usage of each user is shown. The third column indicates all the time each user has used for calculation during this month. The fourth column shows the average time that each job was waiting before the it started running, in days units. In the second table, the same data as in table 1 collected by group is shown.

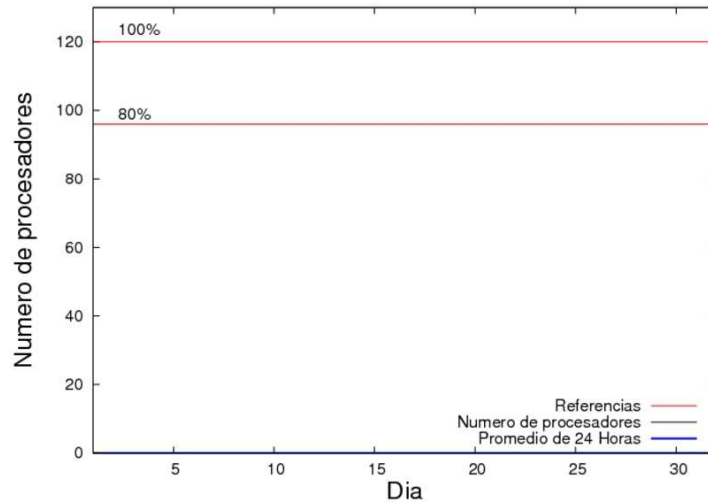


Figure 3: Cluster use. The blue line is a 24 hours average.

Table 3: Calculated time and waiting time in days of the users.

USER	GROUP	Calculated Days	Waiting Time
------	-------	-----------------	--------------

Table 4: Calculated time and waiting time in days of the groups.

GROUP	Calculated Days	Waiting Time
-------	-----------------	--------------