

Estadistics for May/2014

June 1, 2014

Arina

In this brief document we show the usage of arina during May. This month 38000 computing days were used and the the average use of the cluster was 97 %. Since the first of December 227627 computing days were used and the the average use of the Arina cluster was 96 %. The figure shows the usage of Arina along the month. In the first table the usage of each user is shown. The third column indicates all the time each user has used for calculation during this month. The fourth column shows the average time that each job was waiting before the it started running, in days units. In the second table, the same data as in table 1 collected by group is shown.

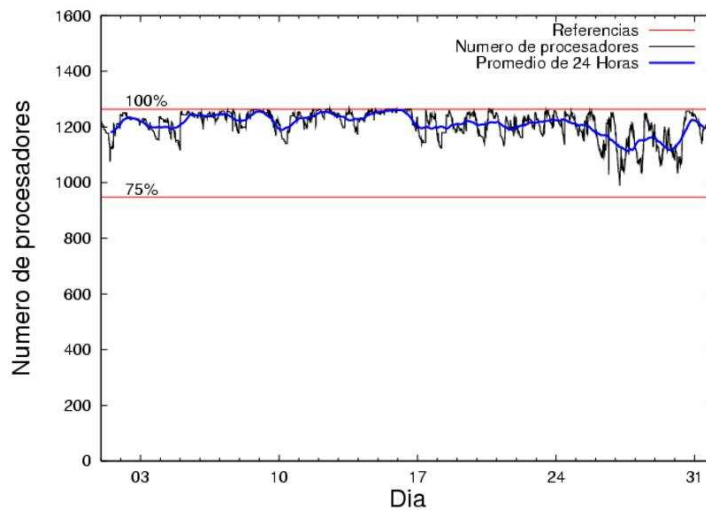


Figure 1: Cluster use. The blue line is a 24 hours average.

Table 1: Calculated time and waiting time in days of the users.

USER	GROUP	Calculated Days	Waiting Time
csazusej	nanogune	13935.68	3.67
povhehea	poahh	3411.26	0.61
poblauro	poxlp	2254.38	0.11
sckcorsf	nanogune	2240.12	0.70
naxyiyib	nanogune	1806.29	0.47
povrucif	polymat	1781.69	0.14
popugurj	pojuu	1592.24	0.58
qoblaago	qorz	1334.95	0.51
pobfoese	poxlp	1026.15	0.82
pobmugoj	pomps	913.79	0.36
povwawaj	pojuu	812.67	0.47
qopgobee	qocpn	751.04	0.21
pobgrgrs	pomps	684.57	0.11
pobrease	pojuu	642.51	0.29
nanululr	nanogune	595.42	0.35
favecvep	qfjfg	570.72	0.83
ciaazapj	poxlp	417.44	0.23
poplopex	pojuu	376.19	0.04
sckwankm	waars	372.76	0.96
qobmimuj	lgsgi	356.26	0.81
kibderua	qofcm	327.71	0.05
favcopee	qfjfg	309.76	0.67
sgkluqun	poxlp	224.46	0.05
pobmelat	arinadm	165.85	0.01
pobinini	poxlp	129.08	0.25
inpesalg	injbi	112.29	0.10
povpisim	pomps	109.86	0.02
qoaarecl	qofcm	108.89	0.06
scpzuola	qorz	105.20	0.07
gaazareg	injss	101.58	0.18
bavfepem	pojuu	76.36	0.25
quaurhei	qfjfg	47.89	0.08
juranga004	potmb	46.47	0.17
quxlegoa	qfjfg	43.09	0.37
qovzaxxr	qorz	37.24	0.09
acplaing	jiads	35.78	0.09
ekpvabaa	ekjgm	28.71	0.00
bcpremae	bcdbu	25.17	0.02
qfpesmai	qfila	24.35	0.05
qobsalae	qambm	13.27	0.10
quaduree	qfila	13.26	0.02
mapalmau	qtftp	10.52	0.18
qfbloala	qfala	7.96	0.02
qoprualg	qofpg	6.45	0.07
qfbleoni	qfjfg	6.40	0.02
kibpapaa	qorz	5.11	0.08
pobrease	potss	0.73	0.29

webogare	arinadm	0.09	0.23
wuppobam	wuebp	0.03	0.01
qopcomof	qofcm	0.02	0.03
wabpepaa	waars	0.00	0.00

Table 2: Calculated time and waiting time in days of the groups.

GROUP	Calculated Days	Waiting Time
nanogune	18577.52	1.34
poxlp	4051.51	0.26
pojuu	3499.97	0.14
poahh	3411.26	0.61
polymat	1781.69	0.14
pomps	1708.22	0.22
qorz	1482.50	0.28
qfjfg	977.87	0.61
qocpn	751.04	0.21
qofcm	436.62	0.05
waars	372.77	0.93
lgsgi	356.26	0.81
arinadm	165.94	0.02
injbi	112.29	0.10
injss	101.58	0.18
potmb	46.47	0.17
qfila	37.61	0.03
jiads	35.78	0.09
ekjgm	28.71	0.00
bedbu	25.17	0.02
qambm	13.27	0.10
qtftp	10.52	0.18
qfala	7.96	0.02
qofpg	6.45	0.07
potss	0.73	0.29
wuebp	0.03	0.01

Arina Data Storage Top Users

In the following graph we plot the users having more data in Arina in the last month. If you appear in this graph, we strongly encourage you to reduce your data in Arina.

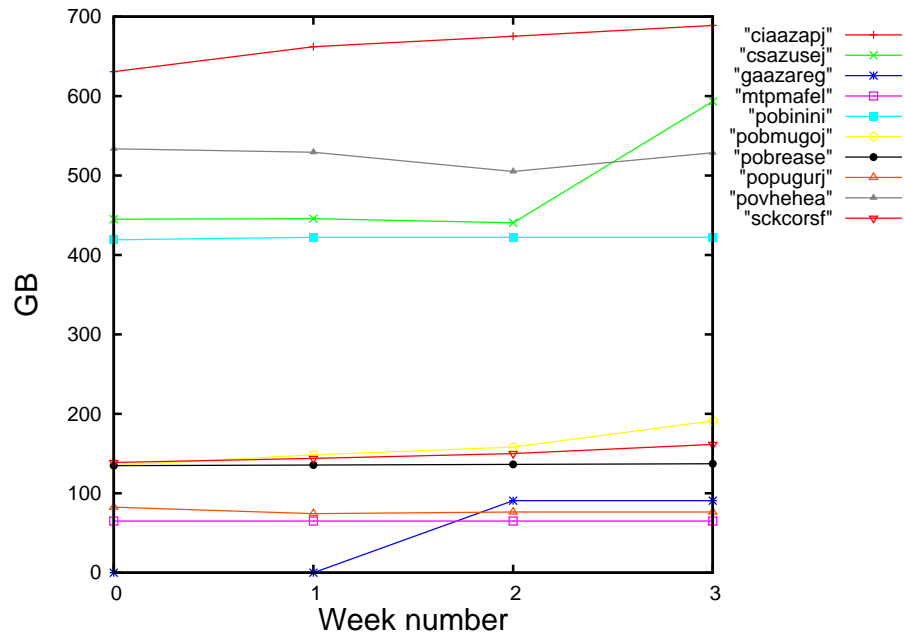


Figure 2: Storage evolution in the last month in GB.

Péndulo

This month 1223 computing days were used in **Péndulo** and the the average use of the cluster was 56 %. Since the first of December 4550 computing days were used and the the average use of the cluster was 30 %. The figure shows the usage of Péndulo along the month. In the first table the usage of each user is shown. The third column indicates all the time each user has used for calculation during this month. The fourth column shows the average time that each job was waiting before the it started running, in days units. In the second table, the same data as in table 1 collected by group is shown.

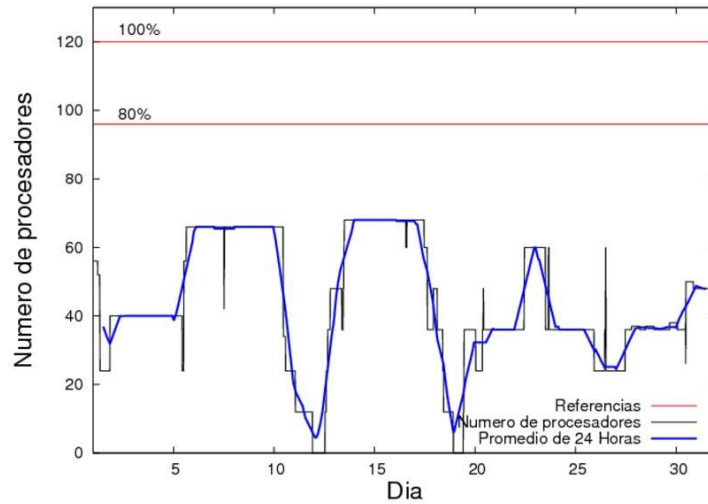


Figure 3: Cluster use. The blue line is a 24 hours average.

Table 3: Calculated time and waiting time in days of the users.

USER	GROUP	Calculated Days	Waiting Time
qovzaxxr	qofcm	669.35	0.59
popugurj	pojju	325.29	0.20
poblaire	poxlp	225.63	0.25
jtppragg	jtjob	2.40	0.00
pobmelat	arinadm	0.53	0.01

Table 4: Calculated time and waiting time in days of the groups.

GROUP	Calculated Days	Waiting Time
qofcm	669.35	0.59
pojoo	325.29	0.20
poxlp	225.63	0.25
jtjob	2.40	0.00
arinadm	0.53	0.01