

Estadistics for May/2013

June 18, 2013

Arina

In this brief document we show the usage of arina during May. This month 31474 computing days where used and the the average use of the cluster was 75 %. Since the first of December 201806 computing days where used and the the average use of the Arina cluster was 82 %. The figure shows the usage of Arina along the month. In the first table the usage of each user is shown. The third column indicates all the time each user has used for calculation during this month. The fourth column shows the average time that each job was waiting before the it started running, in days units. In the second table, the same data as in table 1 collected by group is shown.

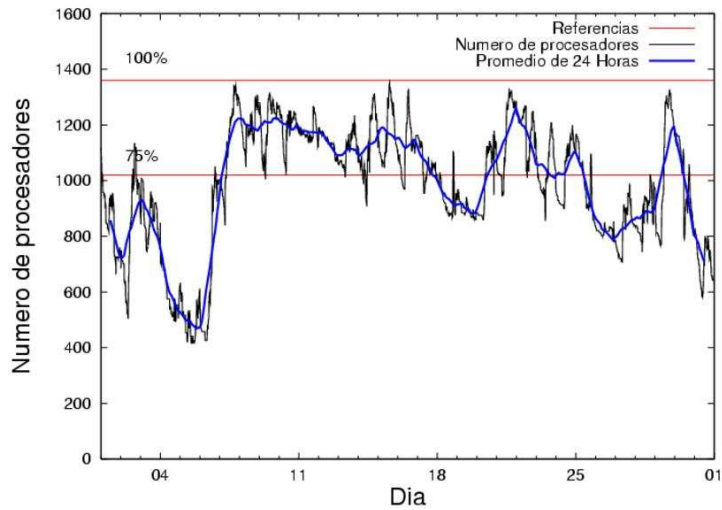


Figure 1: Cluster use. The blue line is a 24 hours average.

Table 1: Calculated time and waiting time in days of the users.

USER	GROUP	Calculated Days	Waiting Time
povhehea	poahh	4495.61	0.11
pmarkaide001	ggmer	4076.70	1.68
povpisim	pomps	3973.59	0.17
sckcorsf	nanogune	3870.48	0.52
ciaazapj	poxlp	1769.54	0.11
povrucif	poxlp	1706.16	0.00
qovzaxxr	qorzz	1342.69	0.23
cixesesb	poxlp	1046.45	0.14
popugurj	pojuu	927.27	0.04
pobmugoj	pojuu	917.23	0.02
pobinini	pojuu	912.22	0.04
bckmimoj	qfjfg	703.12	0.02
scpzuola	qorzz	600.40	0.22
kibmeheg	pojuu	473.11	0.05
poplopex	pojuu	448.58	0.00
quxbabai	qfjfg	448.11	0.01
qoparaya	qofcm	368.77	0.00
qopgobee	qocpn	347.71	0.00
qfpmamoh	qfila	283.93	0.04
bixcobum	gbdga	274.80	0.10
webogare	arinadm	267.22	0.18
quxlegoa	qfjfg	257.89	0.03
qoaarecl	qofcm	202.67	0.00
sgkluqun	pojuu	196.75	0.01
waxpoxxy	waars	171.84	0.01
pobrease	pojuu	165.38	0.01
kibderua	qofcm	160.36	0.00
juranga004	potmb	149.22	0.00
pobrease	potss	145.95	0.21
nabzezem	nanogune	127.46	0.05
kixsasal	pojuu	127.46	0.00
inpfegau	injss	107.20	0.06
csazusej	nanogune	77.04	0.01
bcpmeale	qffbe	74.26	0.07
mapalmau	qtftp	64.58	0.02
gaazareg	injss	43.98	0.05
wmpetali	wdaga	33.00	0.00
sckwankm	waars	32.33	0.01
favecvcp	qfjfg	22.70	0.00
acblonou	ccjla	19.30	0.05
bcpcacaa	mimam	11.84	0.72
qoprualg	qofpg	11.00	0.00
wuppobam	wuebp	10.05	0.00
qfjbaprij	qfila	4.69	0.00
qopcomof	qofcm	3.52	0.15
qfploarf	qfila	3.39	0.00
qobconde	qofcm	3.10	0.00

pobgrgrs	pojuu	1.99	0.00
pobmelat	arinadm	1.04	0.00
mapmemam	qtftp	1.02	0.02
pobmabej	pojuu	0.21	0.00
bavfepem	pojuu	0.09	0.59
qfpesmai	qfila	0.08	0.00
wabpepaa	waars	0.03	0.00
qfxaldad	qflp	0.01	0.00

Table 2: Calculated time and waiting time in days of the groups.

GROUP	Calculated Days	Waiting Time
poxlp	4522.15	0.06
poahh	4495.61	0.11
pojuu	4170.29	0.01
gmer	4076.70	1.68
nanogune	4074.98	0.05
pomps	3973.59	0.17
qorz	1943.09	0.22
qfjfg	1431.82	0.02
qofcm	738.43	0.00
qocpn	347.71	0.00
qfila	292.09	0.03
gbdga	274.80	0.10
arinadm	268.26	0.15
waars	204.20	0.01
injss	151.18	0.05
potmb	149.22	0.00
potss	145.95	0.21
qffbe	74.26	0.07
qtftp	65.60	0.02
wdaga	33.00	0.00
cejla	19.30	0.05
mimam	11.84	0.72
qofpg	11.00	0.00
wuebp	10.05	0.00
qflp	0.01	0.00

Arina Data Storage Top Users

In the following graph we plot the users having more data in Arina in the last month. If you appear in this graph, we strongly encourage you to reduce your data in Arina.

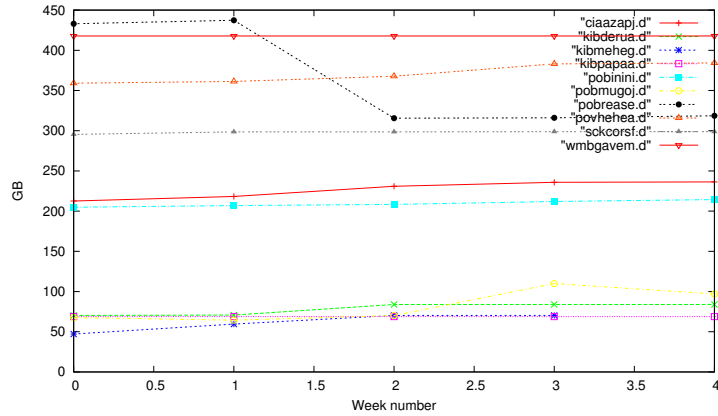


Figure 2: Storage evolution in the last month (in GB).

Péndulo

This month 1424 computing days were used in **Péndulo** and the the average use of the cluster was 9 %. Since the first of December computing days were used and the the average use of the cluster was %. The figure shows the usage of Péndulo along the month. In the first table the usage of each user is shown. The third column indicates all the time each user has used for calculation during this month. The fourth column shows the average time that each job was waiting before the it started running, in days units. In the second table, the same data as in table 1 collected by group is shown.

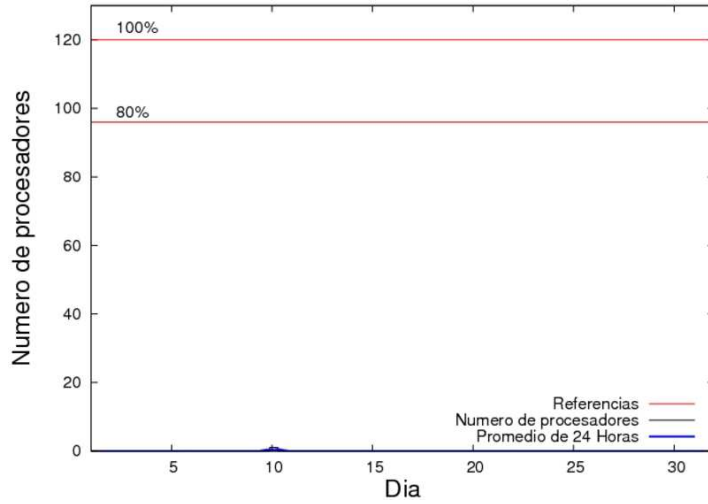


Figure 3: Cluster use. The blue line is a 24 hours average.

Table 3: Calculated time and waiting time in days of the users.

USER	GROUP	Calculated Days	Waiting Time
mtpmafel	mtgfa	0.42	0.08

Table 4: Calculated time and waiting time in days of the groups.

GROUP	Calculated Days	Waiting Time
-------	-----------------	--------------