

Estadistics for May/2012

June 18, 2012

Arina

In this brief document we show the usage of arina during May. This month 34953 computing days were used and the the average use of the cluster was 81 %. Since the first of December 180192 computing days were used and the the average use of the cluster was 71 %. The figure shows the usage of Arina along the month. In the first table the usage of each user is shown. The third column indicates all the time each user has used for calculation during this month. The fourth column shows the average time that each job was waiting before the it started running, in days units. In the second table, the same data as in table 1 collected by group is shown.

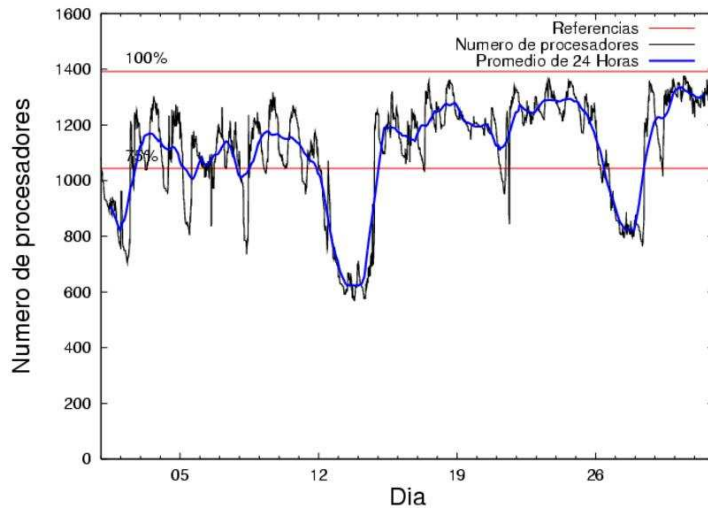


Figure 1: Cluster use. The blue line is a 24 hours average.

Table 1: Calculated time and waiting time in days of the users.

USER	GROUP	Calculated Days	Waiting Time
povhehea	poahh	6723.25	0.25
kibpapaa	qorzz	4586.28	0.40
povwawaj	pojju	4365.65	0.51
favcopee	qfjfg	3693.08	0.75
scpzuola	qorzz	2173.57	0.30
ciaazapj	poxlp	1210.62	0.02
pobrease	potss	1176.62	0.19
qoparaya	qofcm	1154.64	0.01
qopgobee	qocpn	972.84	0.04
qoaarecl	qofcm	931.56	0.06
pobmugoj	pojju	903.80	0.03
sckcorsf	nanogune	865.37	0.07
cixesesb	poxlp	490.06	0.19
wmbgavem	waets	473.83	0.03
kibderua	qofcm	433.53	0.01
qfploarf	qfila	412.24	0.00
wabeslel	waars	410.94	0.02
popugurj	pojju	372.17	0.01
kibmeheg	pojju	363.28	0.08
povrucif	poxlp	330.06	0.02
csazusej	nanogune	325.33	0.30
poalolog	poxlp	296.82	0.09
pobgrgrs	pojju	287.43	0.01
bcpremae	bcdbu	269.95	0.04
mapmemam	qtftp	209.44	0.13
qfpmamoh	qfila	188.95	0.01
inpballj	injbi	184.02	0.00
favecvep	qfjfg	169.20	0.26
quxlegoa	qfjfg	148.96	0.15
pobinini	pojju	117.51	0.01
qfpesmai	qfila	92.56	0.00
wapesnuv	wakgg	91.62	0.21
poblairo	poxlp	88.26	0.05
quxbabai	qfjfg	78.88	0.00
nabzezem	nanogune	72.89	0.02
poplopex	pojju	63.31	0.06
bcpitaia	bcizb	42.89	0.04
mapalmau	magps	37.57	0.01
qopcomof	qofcm	29.25	0.00
upetralanda001	wdaga	27.34	0.20
kixsasal	pojju	23.62	0.01
iapgarue	iaegr	17.36	0.03
wapgoesj	wakgg	10.49	0.02
bckmimoj	qfjfg	9.21	0.01
kiazuirx	waets	6.99	0.03
pobmabej	pojju	5.83	0.03
qfpgapae	qfegp	4.17	0.00

qfbloala	qfala	3.64	0.00
jtpanlod	jtjob	3.45	0.44
qovzaxxr	qorz	3.16	0.04
wabpepaa	waars	0.09	0.00
qoprualg	qofpg	0.02	0.00
pobmelat	arinadm	0.01	0.00
webogare	arinadm	0.00	0.00
kixmagre	poxlp	0.00	0.00

Table 2: Calculated time and waiting time in days of the groups.

GROUP	Calculated Days	Waiting Time
qorz	6763.00	0.37
poahh	6723.25	0.25
pojoo	6502.61	0.06
qfjfg	4099.33	0.40
qofcm	2548.98	0.03
poxlp	2415.82	0.02
nanogune	1263.59	0.08
potss	1176.62	0.19
qocpn	972.84	0.04
qfila	693.76	0.00
waets	480.82	0.03
waars	411.03	0.02
bcdbu	269.95	0.04
qtftp	209.44	0.13
injbi	184.02	0.00
wakgg	102.10	0.06
bcizb	42.89	0.04
magps	37.57	0.01
wdaga	27.34	0.20
iaegr	17.36	0.03
qfegp	4.17	0.00
qfala	3.64	0.00
jtjob	3.45	0.44
qofpg	0.02	0.00
arinadm	0.01	0.00

Pendolo

This month 57 computing days were used in **Pendolo** and the the average use of the cluster was 3 %. Since the first of December 550 computing days were used and the the average use of the cluster was 4 %. The figure shows the usage of Pendolo along the month. In the first table the usage of each user is shown. The third column indicates all the time each user has used for calculation during this month. The fourth column shows the average time that each job was waiting before the it started running, in days units. In the second table, the same data as in table 1 collected by group is shown.

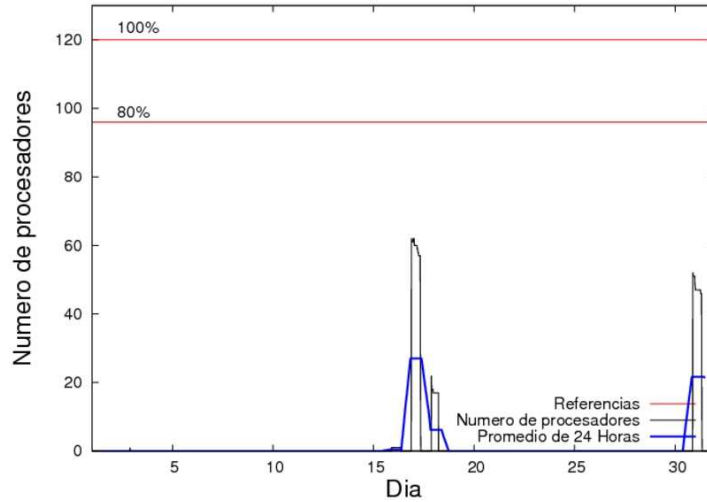


Figure 2: Cluster use. The blue line is a 24 hours average.

Table 3: Calculated time and waiting time in days of the users.

USER	GROUP	Calculated Days	Waiting Time
jtppragg	jtjob	34.22	0.25
jtpanlod	jtjob	23.11	0.34
webogare	arinadm	0.08	0.00

Table 4: Calculated time and waiting time in days of the groups.

GROUP	Calculated Days	Waiting Time
jtjob	57.34	0.27
arinadm	0.08	0.00

Ikerbasque machine

The service has access to 208 xeon cores in this machine, which are older than Arina's ones. The codes of only few big users are maintained there to optimize the maintenance time. This month 316 computing days were used in **Ikerbasque** machine and the the average use of the cluster was 5 %. Since the first of December 15185 computing days were used and the the average use of the cluster was 39 %. In the first table the usage of each user is shown. The third column indicates all the time each user has used for calculation during this month. The fourth column shows the average time that each job was waiting before the it started running, in days units. In the second table, the same data as in table 1 collected by group is shown.

Table 5: Calculated time and waiting time in days of the users.

USER	GROUP	Calculated Days	Waiting Time
pobmugoj	pojoo	316	0.00

Table 6: Calculated time and waiting time in days of the groups.

GROUP	Calculated Days	Waiting Time
pojoo	316.07	0.00