

# Estadistics for May/2011

June 1, 2011

## Arina

In this brief document we show the usage of arina during May. This month 19205 computing days were used and the the average use of the cluster was 82 %. Since the first of December 105804 computing days were used and the the average use of the cluster was 77 %. The figure shows the usage of Arina along the month. In the first table the usage of each user is shown. The third column indicates all the time each user has used for calculation during this month. The fourth column shows the average time that each job was waiting before the it started running, in days units. In the second table, the same data as in table 1 collected by group is shown.

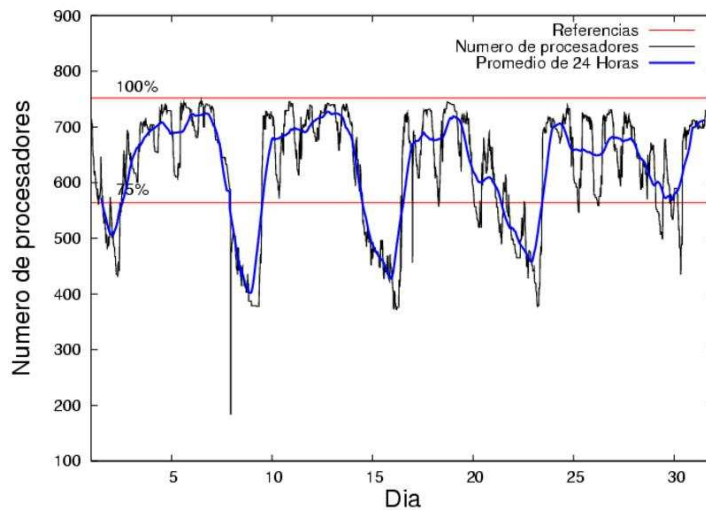


Figure 1: Cluster use. The blue line is a 24 hours average.

Table 1: Calculated time and waiting time in days of the users.

USER	GROUP	Calculated Days	Waiting Time
povhehea	poahh	4743.48	0.25
pobmugoj	pojuu	2641.85	0.05
pobrease	potss	1718.30	0.22
wmbgavem	waets	1161.02	0.11
qopgobee	qocpn	985.15	0.05
povwawaj	pojuu	753.60	0.05
ciaazapj	poxlp	708.09	0.02
quxlegoa	qfjfg	680.41	0.45
scpzuola	qorz	671.79	0.06
kibderua	qofcm	668.11	0.06
favcopee	qfjfg	599.63	0.32
favecvep	qfjfg	506.91	0.21
qovzaxxr	qorz	496.03	1.05
pobgrgrs	pojuu	404.03	0.06
bckmimoj	qfjfg	383.01	0.32
povrucif	poxlp	355.60	0.02
waptctce	waets	275.02	0.05
wabeslel	waars	197.02	0.55
kixmagre	poxlp	173.46	0.02
pobrease	pojuu	172.47	0.06
qoaarecl	qofcm	134.18	0.08
qfbleoni	qffca	132.37	0.14
inpesalg	injbi	120.41	0.05
pobmelat	arinadm	103.37	0.03
poblairo	poxlp	90.95	0.11
quxbabai	qfjfg	62.68	0.03
poplopex	pojuu	51.93	0.01
kivremey	qpjag	49.81	0.00
ggpsamam	ggmer	33.58	0.11
wmpetali	wdaga	28.93	0.03
jipzasib	jieab	26.00	0.04
webogare	arinadm	19.43	0.06
bpcacaa	mimam	18.11	0.23
poalolog	poxlp	14.53	0.24
qoprualg	qofpg	13.29	0.00
iapgarue	iaegr	3.74	0.11
qoparaya	qofcm	3.03	0.07
qfbbaprj	qfila	1.43	0.00
qopcomof	qofcm	1.01	0.12
wuppobam	wuebp	0.54	0.00
wabgalaj	waars	0.29	0.01
sgpfemae	gpucomp	0.23	0.03
pobmabej	pojuu	0.01	0.00
mapmemam	qtftp	0.00	0.00
ccpsoeta	jieab	0.00	0.00

Table 2: Calculated time and waiting time in days of the groups.

GROUP	Calculated Days	Waiting Time
poahh	4743.48	0.25
pojuu	4023.89	0.04
qfjfg	2232.64	0.34
potss	1718.30	0.22
waets	1436.04	0.09
poxlp	1342.63	0.04
qorz	1167.82	0.86
qocpn	985.15	0.05
qofcm	806.33	0.06
waars	197.31	0.05
qffca	132.37	0.14
arinadm	122.79	0.05
injbi	120.41	0.05
qpjag	49.81	0.00
ggmer	33.58	0.11
wdaga	28.93	0.03
jieab	26.00	0.03
mimam	18.11	0.23
qofpg	13.29	0.00
iaegr	3.74	0.11
qfila	1.43	0.00
wuebp	0.54	0.00
gpucomp	0.23	0.03
qtftp	0.00	0.00

## Pendolo

This month 861 computing days were used in **Pendolo** and the the average use of the cluster was 39 %. Since the first of December 2922 computing days were used and the the average use of the cluster was 19 %. The figure shows the usage of Pendolo along the month. In the first table the usage of each user is shown. The third column indicates all the time each user has used for calculation during this month. The fourth column shows the average time that each job was waiting before the it started running, in days units. In the second table, the same data as in table 1 collected by group is shown.

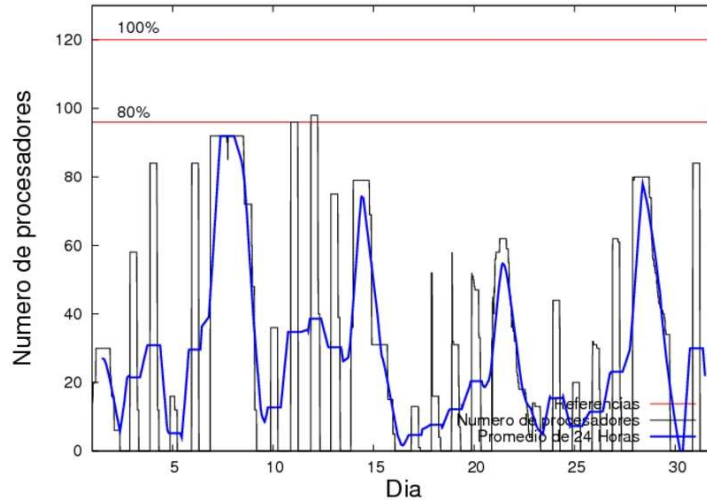


Figure 2: Cluster use. The blue line is a 24 hours average.

Table 3: Calculated time and waiting time in days of the users.

USER	GROUP	Calculated Days	Waiting Time
qovzaxxr	qofcm	556.52	2.59
jtppragg	jtjob	248.12	0.62
mtpmafel	mtgfa	56.26	2.84

Table 4: Calculated time and waiting time in days of the groups.

GROUP	Calculated Days	Waiting Time
qofcm	556.52	2.59
jtjob	248.12	0.62
mtgfa	56.26	2.84