

# Estadistics for April/2019

May 1, 2019

## Arina

In this brief document we show the usage of arina during April. This month 84690 computing days were used and the average use of the cluster was 76 %. Since the first of December 459198 computing days were used and the average use of the Arina cluster was 82 %. The figure shows the usage of Arina along the month. In the first table the usage of each user is shown. The third column indicates all the time each user has used for calculation during this month. The fourth column shows the average time that each job was waiting before the it started running, in days units. In the second table, the same data as in table 1 collected by group is shown.

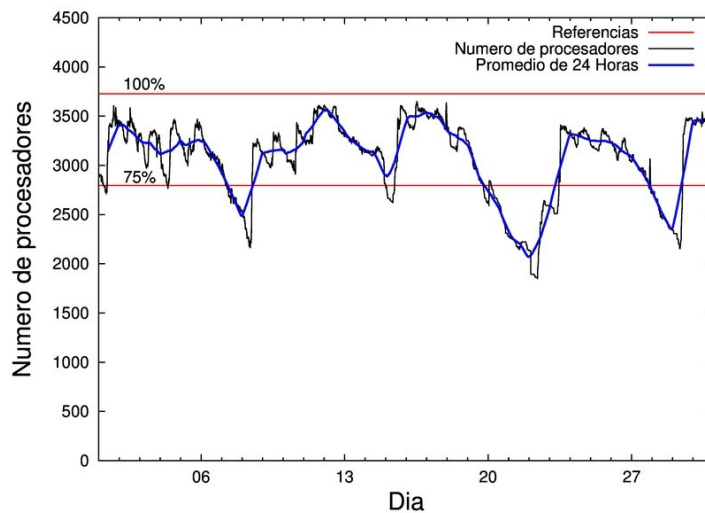


Figure 1: Cluster use. The blue line is a 24 hours average.

Table 1: Calculated time and waiting time in days of the users.

USER	GROUP	Calculated Days	Waiting Time
govzaxxr	polymat	19622.23	0.24
povwawaj	pojoo	8001.48	0.15
naplodud	nanogune	7569.28	0.01
poamaxg	polymat	5951.97	0.10
quxtaxxs	polymat	4893.53	0.44
povhehea	poahh	4849.50	0.43
povmieci	pojoo	4640.39	0.13
fabusgui	qfjfg	3870.91	0.06
sckahnom	potmb	2430.69	0.49
poairurm	polymat	2221.62	0.09
pobladej	poxlp	2188.43	0.03
poagafrm	pojoo	2123.92	0.43
bcpliolj	bgjbp	2060.19	0.34
poarloi	pojoo	1298.64	0.02
enblairo	egune	1293.26	0.25
pobmabej	potmb	1159.72	0.03
kibderua	qofcm	1097.12	0.00
povrucif	polymat	1046.63	0.02
poaganau	polymat	830.51	0.29
faacalea	qfjfg	826.26	0.01
pobgrgrs	pomps	650.75	0.00
poanacuj	polymat	606.34	0.00
povpisim	pomps	594.68	0.00
doxcarei	poemg	474.63	0.06
pobluluv	poxlp	464.50	0.04
kibderua	qoabl	380.16	0.00
popporiv	poxlp	371.66	0.16
ciaolarb	pojoo	277.01	0.00
pobrease	potmb	261.51	0.00
dixsasam	pojoo	259.92	0.01
poaurura	poxlp	226.76	0.00
ciaalece	pojoo	223.14	0.00
pobfoese	poxlp	202.60	0.00
qfbalale	qfjfg	194.45	0.03
poaugbia	pojoo	176.19	0.02
quaduree	qfila	152.15	0.00
quamearx	qfila	135.42	0.00
scavinam	poemg	131.43	0.34
ciaansap	pojoo	126.81	0.03
pobcacad	pojoo	121.67	0.00
qobcacea	qocpn	121.48	0.00
qopgobee	qocpn	92.86	0.00
qfpesmai	qfila	75.82	0.00
quainbea	qfjfg	62.43	0.04
qopcomof	qofcm	59.69	0.02
bckmimoj	qfjfg	53.47	0.00
qobpamap	qocpn	45.07	0.00

qobsalae	qambm	33.34	0.00
csazusej	nanogune	32.83	0.02
kiadadag	pojuu	31.37	0.01
kiasomal	qocpn	18.24	0.00
quxlegoa	qfjfg	16.45	0.00
wepgopej	wejcm	9.05	0.38
ikasle03	pomaster	5.96	0.00
qoprualg	qofpg	5.75	0.00
favcopee	qfjfg	4.49	0.00
poasibrd	poxlp	3.74	0.00
dibxuxux	poxlp	3.24	0.00
webogare	arinadm	2.29	0.02
bgbalurm	bgjbp	1.62	0.00
kixsasal	pojuu	1.32	0.00
enxararo	egune	1.14	0.00
quavagas	qfjfg	0.99	0.00
inagaaro	oijgc	0.95	0.00
faaatnaa	faraz	0.80	0.00
poajejec	polymat	0.49	0.00
pobtxe01	poxlp	0.15	0.01
kixgrazr	potmb	0.13	0.01
pobmelat	arinadm	0.09	0.00
poazago	potmb	0.04	0.00
oibargia	oijgc	0.03	0.00
wepgaara	weaga	0.01	0.00
oibaclaa	oijgc	0.01	0.00
biadecum	bicgm	0.01	0.02

---

Table 2: Calculated time and waiting time in days of the groups.

GROUP	Calculated Days	Waiting Time
polymat	35173.32	0.17
pojoo	17281.84	0.10
nanogune	7602.11	0.01
qfjfg	5029.46	0.04
poahh	4849.50	0.43
potmb	3852.09	0.16
poxlp	3461.07	0.02
bgjbp	2061.81	0.17
egune	1294.40	0.23
pomps	1245.43	0.00
qofcm	1156.81	0.01
poemg	606.06	0.25
qoabl	380.16	0.00
qfila	363.39	0.00
qocpn	277.65	0.00
qambm	33.34	0.00
wejcm	9.05	0.38
pomaster	5.96	0.00
qofpg	5.75	0.00
arinadm	2.38	0.01
oijgc	1.00	0.00
faraz	0.80	0.00
weaga	0.01	0.00
bicgm	0.01	0.02

## Arina Data Storage Top Users

In the following graph we plot the users having more data in Arina in the last month. If you appear in this graph, we strongly encourage you to reduce your data in Arina.

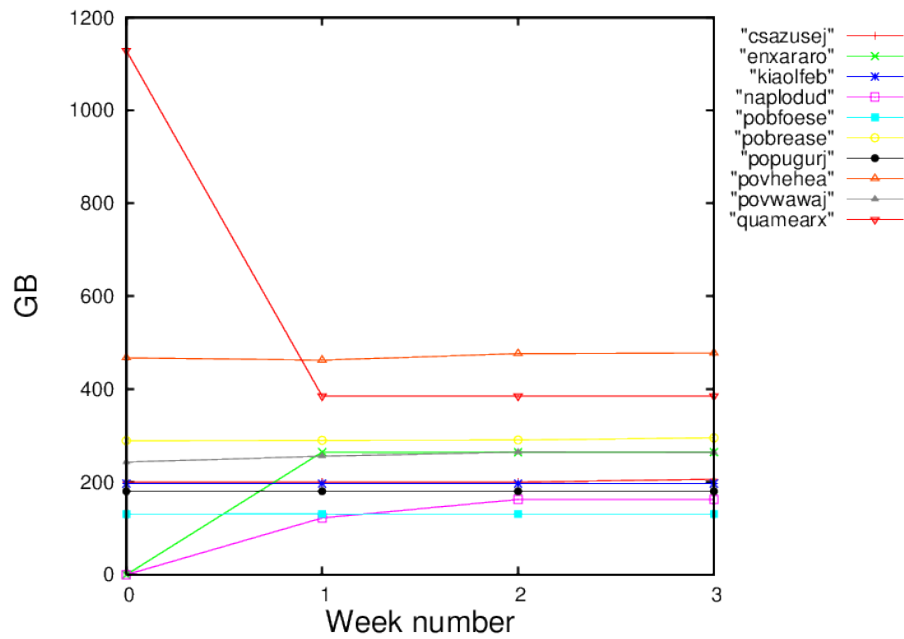


Figure 2: Storage evolution in the last month in GB.