

# Estadistics for April/2018

May 1, 2018

## Arina

In this brief document we show the usage of arina during April. This month 112105 computing days were used and the average use of the cluster was 100 %. Since the first of December 440893 computing days were used and the average use of the Arina cluster was 78 %. The figure shows the usage of Arina along the month. In the first table the usage of each user is shown. The third column indicates all the time each user has used for calculation during this month. The fourth column shows the average time that each job was waiting before the it started running, in days units. In the second table, the same data as in table 1 collected by group is shown.

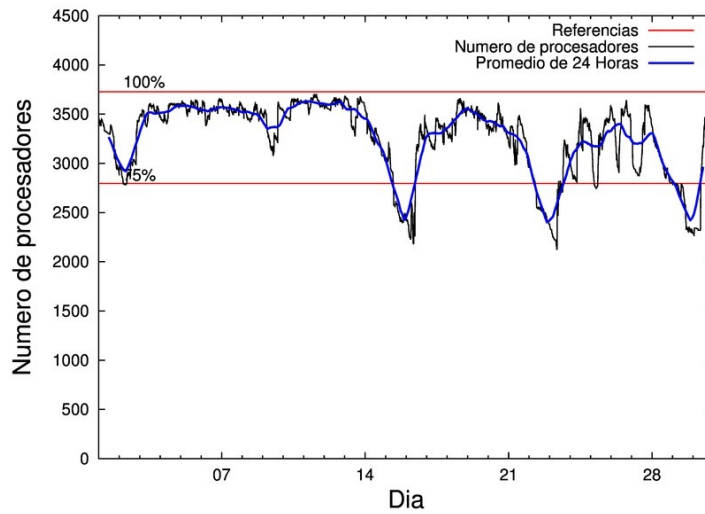


Figure 1: Cluster use. The blue line is a 24 hours average.

Table 1: Calculated time and waiting time in days of the users.

USER	GROUP	Calculated Days	Waiting Time
povhehea	poahh	20745.88	2.74
qovzaxxr	polymat	17388.64	0.84
povwawaj	pojuu	13503.87	0.75
poairurm	polymat	7311.93	0.74
pobmugoj	pomps	6554.38	0.06
povrucif	polymat	4997.25	0.89
scavinam	poemg	4950.26	0.68
enxararo	egune	4944.21	0.11
poamaxg	polymat	4792.95	0.14
poaugbia	pojuu	3558.99	0.73
kiadadag	pojuu	3366.85	0.49
pobgrgrs	pomps	3342.25	0.11
dixsasam	pojuu	2266.68	0.29
quamearx	qfila	1756.93	0.01
enblairo	egune	1571.42	0.17
qopgobee	qocpn	1560.13	0.01
enbxilij	egune	1475.51	0.91
fabusgui	qfjfg	837.85	0.16
qobpamap	qocpn	580.28	0.01
poajejec	polymat	558.54	0.03
pobladej	poxlp	527.89	0.05
doxcarei	poemg	497.45	0.09
faacalea	qfjfg	452.39	0.06
poafesaa	pojuu	434.10	0.18
poarloi	pojuu	383.57	0.01
qfpmamoh	qfila	347.42	0.04
naaruore	nanogune	319.26	0.14
sgibaasj	vgsgi	260.95	0.05
poarugua	pojuu	259.43	0.60
mtpmafel	mtgfa	230.48	0.23
qfbleoni	qfjfg	212.76	0.29
pobmabej	potmb	189.91	0.46
popugurj	pojuu	179.72	1.22
pobsisis	pomps	165.67	0.01
quarafam	qfjfg	155.97	0.14
fablozoz	qfila	150.77	0.01
kiasomal	qocpn	129.51	0.00
qobsalae	qambm	126.71	0.01
quaqugaj	qfila	125.98	0.00
poaszsze	poxlp	103.82	0.01
webogare	arinadm	85.84	0.02
qfqbaprij	qfila	82.04	0.07
qobzazag	qocpn	81.70	0.00
quxlegoa	qfjfg	75.78	0.05
qfpesmai	qfila	74.87	0.00
scpridei	qofcm	65.20	0.01
quaduree	qfila	48.78	0.05

iaretxabalet002	bgjal	44.32	0.20
poalocad	polymat	41.96	0.00
poblairo	poxlp	28.35	0.09
kiaurbao	poxlp	26.72	0.32
kibderua	qofcm	26.55	0.01
pobcacad	pojju	20.70	0.05
kiateanm	qocpn	14.54	0.01
pobrease	potmb	13.72	0.00
qobconde	qofcm	13.57	0.00
poainugn	pojju	12.34	0.05
poasibrd	poxlp	8.05	0.00
qoparaya	qofcm	8.00	0.00
wapgoesj	wakgg	6.79	0.03
kiaolfeb	potss	3.68	0.00
kixgrazr	potmb	1.62	0.00
pobfoese	poxlp	1.25	5.52
favecvep	qfjfg	0.85	0.00
povpisim	pomps	0.31	0.00
poatealx	pojju	0.12	0.00
poagafrm	pojju	0.12	0.00
poadoodj	potmb	0.10	0.01
ciazuulm	pojju	0.07	0.00
improagj	imfmg	0.02	0.04
bgppermp	bgppb	0.00	0.00

---

Table 2: Calculated time and waiting time in days of the groups.

GROUP	Calculated Days	Waiting Time
polymat	35091.26	0.57
pojoo	23986.55	0.54
poahh	20745.88	2.74
pomps	10062.60	0.05
egune	7991.14	0.52
poemg	5447.71	0.66
qfila	2586.79	0.01
qocpn	2366.16	0.01
qfjfg	1735.61	0.21
poxlp	696.09	0.06
nanogune	319.26	0.14
vgsgi	260.95	0.05
mtgfa	230.48	0.23
potmb	205.34	0.04
qambm	126.71	0.01
qofcm	113.32	0.01
arinadm	85.84	0.02
bgjal	44.32	0.20
wakgg	6.79	0.03
potss	3.68	0.00
imfmg	0.02	0.04
bgppb	0.00	0.00

## Arina Data Storage Top Users

In the following graph we plot the users having more data in Arina in the last month. If you appear in this graph, we strongly encourage you to reduce your data in Arina.

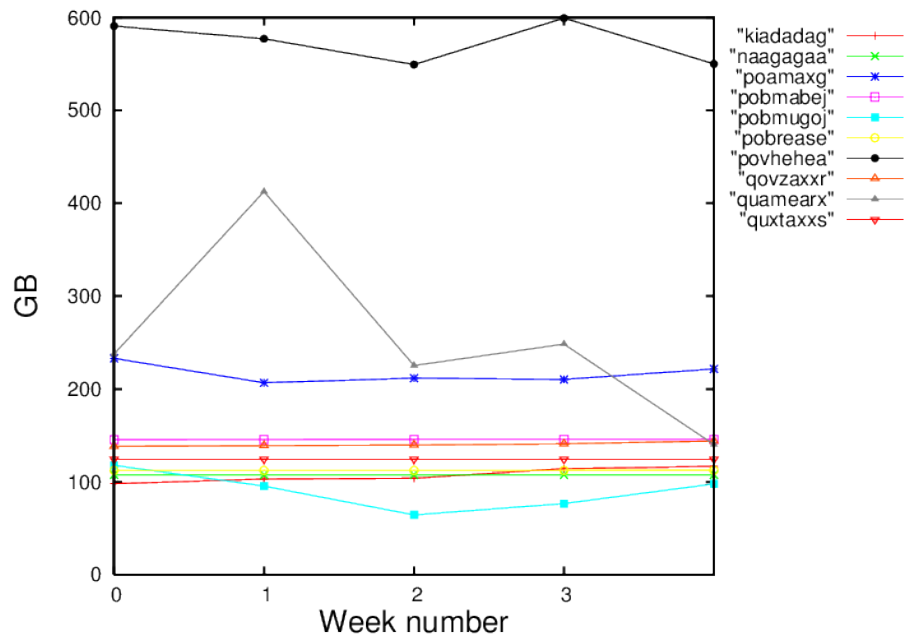


Figure 2: Storage evolution in the last month in GB.