

Estadistics for April/2016

May 2, 2016

Arina

In this brief document we show the usage of arina during April. This month 46185 computing days where used and the the average use of the cluster was 82 %. Since the first of December 253336 computing days where used and the the average use of the Arina cluster was 89 %. The figure shows the usage of Arina along the month. In the first table the usage of each user is shown. The third column indicates all the time each user has used for calculation during this month. The fourth column shows the average time that each job was waiting before the it started running, in days units. In the second table, the same data as in table 1 collected by group is shown.

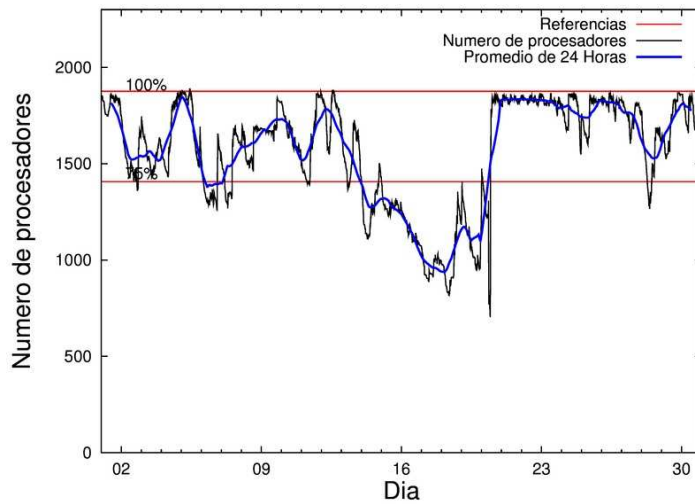


Figure 1: Cluster use. The blue line is a 24 hours average.

Table 1: Calculated time and waiting time in days of the users.

USER	GROUP	Calculated Days	Waiting Time
bckmimoj	qfjfg	6176.44	0.82
povhehea	poahh	5655.77	0.29
qfbgoroj	qfjfg	3859.09	0.55
fabusgui	qfjfg	2629.35	0.85
pobmugoj	pomps	2585.44	0.18
povrucif	polymat	2532.06	0.28
pobmabej	potmb	2043.45	0.07
kibderua	qofcm	1694.14	0.06
juranga004	potmb	1616.63	0.18
poblauro	poxlp	1512.72	0.37
kivpepor	kirpp	1361.65	0.35
csazusej	nanogune	1253.62	0.55
oraruori	polymat	1243.13	0.96
pobgrgrs	pomps	1229.66	0.16
pobfoese	poxlp	1208.39	0.29
qoaarecl	qofcm	1154.51	0.03
poalocad	polymat	984.45	0.31
povmieci	pojoo	931.78	0.09
enxararo	egune	857.22	0.15
poamaxg	polymat	608.18	0.14
qopgobee	qocpn	556.45	0.09
quaurhei	qfjfg	462.82	0.14
kiasomal	qocpn	405.09	0.12
faacalea	qfjfg	394.08	0.11
favecvep	qfjfg	392.45	0.31
quxmarur	qfjfg	378.82	0.09
qopcomof	qofcm	318.53	0.05
navdesad	nanopeji	273.30	0.89
qobsalae	qambm	196.07	0.04
poagumaj	pojoo	190.60	0.24
popugurj	pojoo	157.59	1.12
poagiaie	pojoo	133.34	0.00
kiarorom	poxlp	121.58	0.14
kiaolfeb	qocpn	113.16	0.00
wubcavaa	wuash	108.83	0.09
pobcacad	pojoo	101.22	1.34
mapalmau	qtftp	95.14	0.16
povpisim	pomps	92.47	0.40
kixgrazr	potmb	83.44	0.03
kiadadag	pojoo	78.26	0.20
gbpbeseq	gbavm	48.25	0.10
qoprualg	qofpg	44.05	0.05
sckwankm	waars	42.16	0.02
quvvalom	qfjfg	39.50	0.23
pobrease	potmb	37.13	0.09
dixsasam	pojoo	34.58	0.04
kiaurbao	poxlp	26.19	0.07

kixsasal	pojuu	23.89	0.21
wuppobam	wuebp	16.43	0.00
doxcarei	poxlp	14.37	0.17
wmpetali	wdaga	12.24	0.01
quxlegoa	qjfg	9.01	0.15
webogare	arinadm	8.25	0.05
faavzae	qfila	7.38	0.00
pobmelat	arinadm	6.55	0.00
kiadugat	poxlp	6.45	0.10
qfbloala	qjfg	4.50	0.19
qfbbaprij	qfila	3.87	0.03
mapmemam	qtftp	2.88	0.11
faaatnaa	faraz	2.55	0.00
enxcacaj	egune	1.32	0.08
enxkakan	egune	0.96	0.00
qoparaya	qofcm	0.85	0.00
povracoe	pomps	0.58	0.09
quapuoli	qocpn	0.21	0.00
qipvigap	qijgl	0.20	0.01
poasobas	pojuu	0.01	0.07
pobromam	pomps	0.00	0.02

Table 2: Calculated time and waiting time in days of the groups.

GROUP	Calculated Days	Waiting Time
qjfg	14346.05	0.59
poahh	5655.77	0.29
polymat	5367.83	0.34
pomps	3908.15	0.18
potmb	3780.65	0.13
qofcm	3168.02	0.05
poxlp	2889.69	0.24
pojju	1651.27	0.33
kirpp	1361.65	0.35
nanogune	1253.62	0.55
qocpn	1074.91	0.09
egune	859.50	0.13
nanopeji	273.30	0.89
qambm	196.07	0.04
wuash	108.83	0.09
qtftp	98.02	0.14
gbavm	48.25	0.10
qofpg	44.05	0.05
waars	42.16	0.02
wuebp	16.43	0.00
arinadm	14.80	0.04
wdaga	12.24	0.01
qfila	11.25	0.02
faraz	2.55	0.00
qijgl	0.20	0.01

Arina Data Storage Top Users

In the following graph we plot the users having more data in Arina in the last month. If you appear in this graph, we strongly encourage you to reduce your data in Arina.

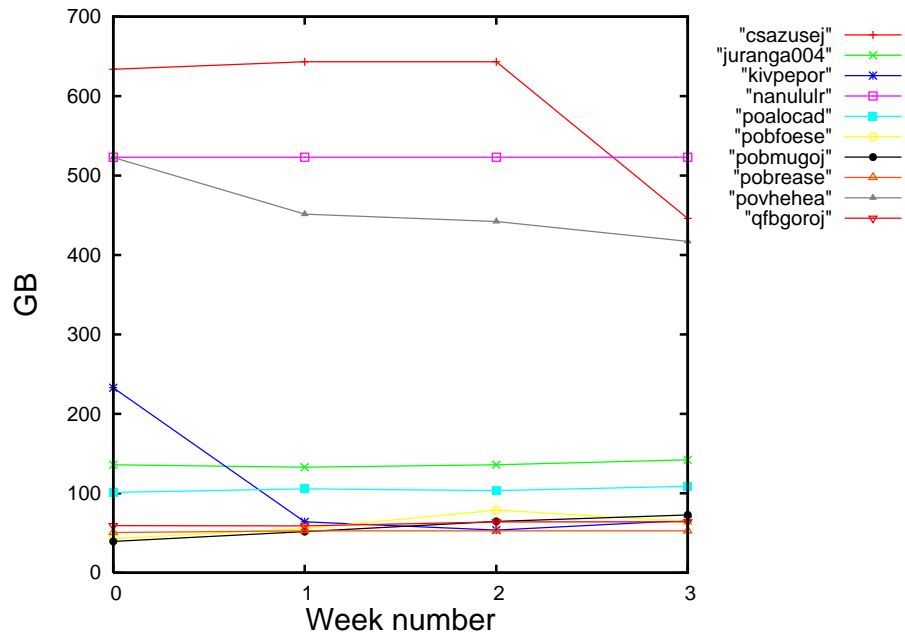


Figure 2: Storage evolution in the last month in GB.