

Estadistics for April/2015

May 1, 2015

Arina

In this brief document we show the usage of arina during April. This month 49932 computing days were used and the the average use of the cluster was 89 %. Since the first of December 244091 computing days were used and the the average use of the Arina cluster was 86 %. The figure shows the usage of Arina along the month. In the first table the usage of each user is shown. The third column indicates all the time each user has used for calculation during this month. The fourth column shows the average time that each job was waiting before the it started running, in days units. In the second table, the same data as in table 1 collected by group is shown.

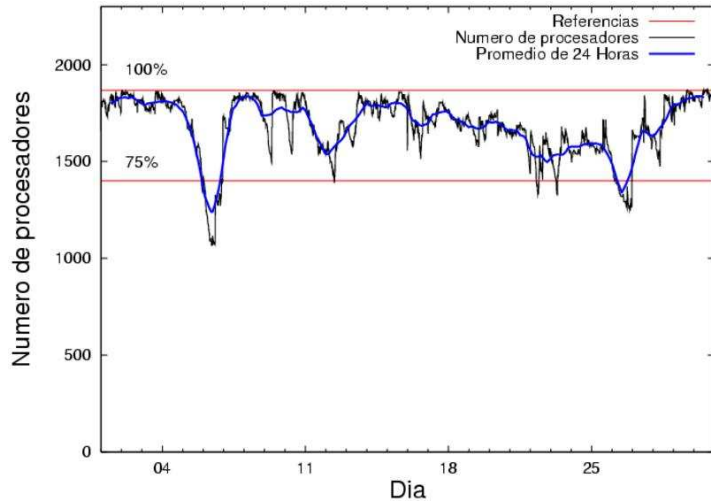


Figure 1: Cluster use. The blue line is a 24 hours average.

Table 1: Calculated time and waiting time in days of the users.

USER	GROUP	Calculated Days	Waiting Time
sckcorsf	nanogune	15468.98	2.00
juranga004	potmb	6972.34	1.03
poamaxg	polymat	5403.07	1.47
povhehea	poahh	3363.05	0.65
povpisim	pomps	3046.98	0.65
pobmabej	potmb	2707.99	0.09
fabusgui	qfjfg	2457.89	0.25
kivpepor	kirpp	2296.39	0.22
pobmugoj	pomps	1118.75	0.11
naaalcaa	nanopeji	702.21	1.49
qopgobee	qocpn	592.91	0.04
nanululr	nanogune	589.12	0.26
kixgrazr	potmb	576.34	0.11
poblairo	poxlp	556.53	0.78
qovzaxxr	polymat	547.31	0.33
poalocad	polymat	546.48	0.06
qfbgoroj	qfjfg	432.33	0.19
kixbebej	poxlp	341.40	0.05
povrucif	polymat	301.42	0.08
kiasomal	qocpn	232.70	0.06
kiaolfeb	qocpn	197.53	0.17
vcposamj	vcnor	195.31	0.08
csazusej	nanogune	191.94	0.16
mapalmau	qtftp	135.51	0.31
favcopee	qfjfg	130.15	0.37
upetralanda001	wdaga	117.64	0.55
bixbrdem	gbdga	111.73	0.11
qoprualg	qofpg	110.64	0.06
pobfoese	poxlp	86.29	0.02
wubcavaa	wuash	68.20	0.15
pobrease	potmb	52.94	1.91
pobgrgrs	pomps	41.02	0.09
qfpbaprj	qfila	38.05	0.01
kibderua	qofcm	36.43	0.04
ciaazapj	poxlp	30.85	0.16
wepgaara	weaga	29.00	0.12
pobcacad	pojju	23.99	0.00
kixsasal	pojju	22.90	0.11
qobffib	qocpn	15.30	0.14
qopcomof	qofcm	13.90	0.08
pobinini	poxlp	13.65	0.03
mtpmafel	mtgfa	13.58	0.01
qobmimuj	lgsgi	10.67	0.02
qfpmamoh	qfila	7.06	0.00
kiadugat	poxlp	5.93	0.01
qfbleoni	qfjfg	5.33	1.01
pobmelat	arinadm	1.69	0.00

povmieci	pojju	1.51	0.06
qfxaldad	qflp	1.30	0.00
sckwankm	waars	1.23	0.00
povracoe	pomps	0.90	0.05
quxlegoa	qfjfg	0.46	0.01
ggpagrom	ggmer	0.04	0.05
kiaurbao	poxlp	0.03	0.01
gbpaljod	gbmvg	0.01	0.02
webogare	arinadm	0.00	0.00
pobromam	pomps	0.00	0.00

Table 2: Calculated time and waiting time in days of the groups.

GROUP	Calculated Days	Waiting Time
nanogune	16250.04	1.89
potmb	10309.60	0.49
polymat	6798.28	0.61
pomps	4207.65	0.37
poahh	3363.05	0.65
qfjfg	3026.17	0.26
kirpp	2296.39	0.22
qocpn	1038.44	0.07
poxlp	1034.68	0.06
nanopeji	702.21	1.49
vcnor	195.31	0.08
qtftp	135.51	0.31
wdaga	117.64	0.55
gbdga	111.73	0.11
qofpg	110.64	0.06
wuash	68.20	0.15
qofcm	50.33	0.06
pojju	48.40	0.07
qfila	45.11	0.01
weaga	29.00	0.12
mtgfa	13.58	0.01
lgsgi	10.67	0.02
arinadm	1.69	0.00
qflp	1.30	0.00
waars	1.23	0.00
ggmer	0.04	0.05
gbmvg	0.01	0.02

Arina Data Storage Top Users

In the following graph we plot the users having more data in Arina in the last month. If you appear in this graph, we strongly encourage you to reduce your data in Arina.

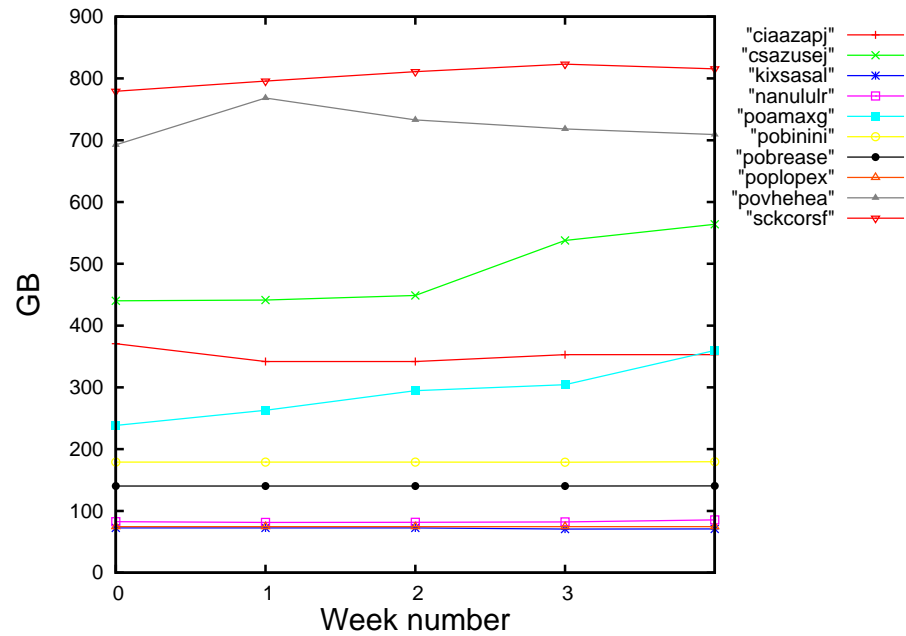


Figure 2: Storage evolution in the last month in GB.

Péndulo

This month 12 computing days were used in **Péndulo** and the the average use of the cluster was 0 %. Since the first of December computing days were used and the the average use of the cluster was %. The figure shows the usage of Péndulo along the month. In the first table the usage of each user is shown. The third column indicates all the time each user has used for calculation during this month. The fourth column shows the average time that each job was waiting before the it started running, in days units. In the second table, the same data as in table 1 collected by group is shown.

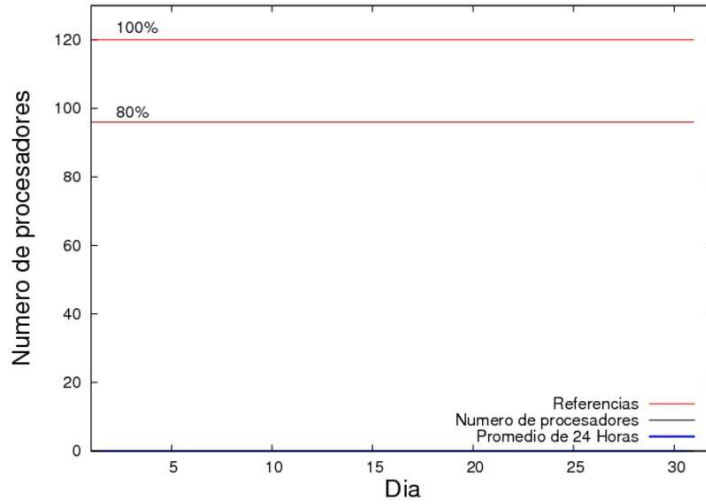


Figure 3: Cluster use. The blue line is a 24 hours average.

Table 3: Calculated time and waiting time in days of the users.

USER	GROUP	Calculated Days	Waiting Time
------	-------	-----------------	--------------

Table 4: Calculated time and waiting time in days of the groups.

GROUP	Calculated Days	Waiting Time
-------	-----------------	--------------