

Estadistics for April/2014

May 1, 2014

Arina

In this brief document we show the usage of arina during April. This month 39230 computing days were used and the the average use of the cluster was 101 %. Since the first of December 188196 computing days were used and the the average use of the Arina cluster was 95 %. The figure shows the usage of Arina along the month. In the first table the usage of each user is shown. The third column indicates all the time each user has used for calculation during this month. The fourth column shows the average time that each job was waiting before the it started running, in days units. In the second table, the same data as in table 1 collected by group is shown.

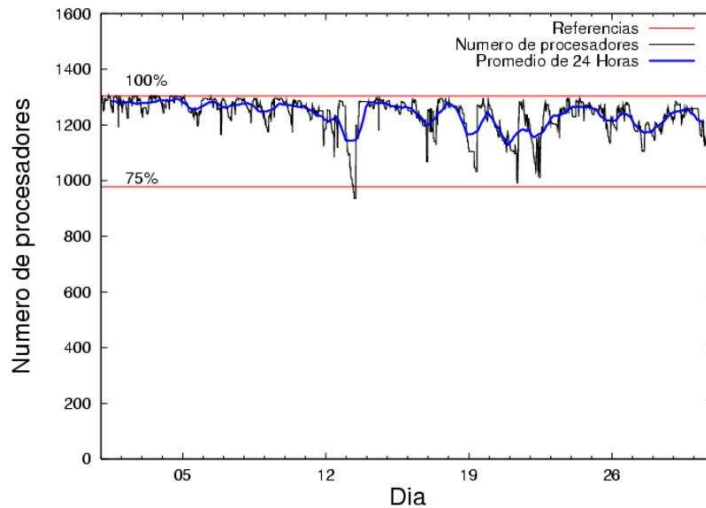


Figure 1: Cluster use. The blue line is a 24 hours average.

Table 1: Calculated time and waiting time in days of the users.

USER	GROUP	Calculated Days	Waiting Time
csazusej	nanogune	13187.03	5.03
povhehea	poahh	5952.42	0.42
naxyiyib	nanogune	2668.55	0.27
scpzuola	qorzz	2266.67	1.40
povwawaj	pojoo	1795.50	0.79
kibpapaa	qorzz	1686.90	5.98
poblauro	poxlp	1029.55	0.18
povrucif	polymat	1015.15	0.29
qopgobee	qocpn	953.96	0.21
sckwankm	waars	825.97	1.48
pobmugoj	pomps	705.08	0.17
pobmabej	potmb	676.77	0.14
sckcorsf	nanogune	668.20	0.48
qoblaago	qorzz	666.09	0.56
favcopee	qfjfg	597.97	1.42
pobgrgrs	pomps	519.47	0.11
popugurj	pojoo	496.65	0.23
povpisim	pomps	476.46	0.51
quaurhei	qfjfg	450.41	0.26
pobcacad	pojoo	407.20	0.06
ciaazapj	poxlp	382.93	0.18
mapalmau	qtftp	226.76	1.22
kibderua	qofcm	223.51	0.04
pobfoese	poxlp	213.02	0.26
sgkluqun	poxlp	165.36	0.05
nanululr	nanogune	127.44	0.08
pobmabej	pomps	105.59	0.18
pobmugoj	pojoo	79.69	2.38
gaazareg	injss	71.33	0.15
qobmimuj	lgsgi	68.07	0.30
kixbebej	poxlp	66.36	0.27
qoaarecl	qofcm	65.69	0.04
ekpvebaa	ekjgm	55.64	0.00
pobinini	poxlp	52.11	0.06
qfbleoni	qfjfg	48.12	0.04
inpesalg	injbi	39.50	0.04
kixsasal	pojoo	38.34	0.08
qobsalae	qambm	33.34	0.41
qfxaldad	qfllp	28.21	0.05
juranga004	potmb	27.98	0.16
quxlegoa	qfjfg	25.24	0.54
bavfepem	pojoo	19.90	0.45
pobrease	potss	16.60	0.12
qfjbaprij	qfila	15.10	0.47
wmpabuf	wmjcd	5.71	0.28
favecvcp	qfjfg	4.64	0.45
qfbloala	qfala	4.63	0.01

qopcomof	qofcm	2.06	0.26
oipbibij	oijbb	1.30	0.06
bcpremae	bcdbu	0.86	0.06
qfbgoroj	qfjfg	0.62	0.00
pobmelat	arinadm	0.29	0.00
wabpepaa	waars	0.00	0.18
naamamap	nanogune	0.00	0.00
kixmocaa	potmb	0.00	0.00
gbpaljod	gbm gg	0.00	0.00

Table 2: Calculated time and waiting time in days of the groups.

GROUP	Calculated Days	Waiting Time
nanogune	16651.22	2.14
poahh	5952.42	0.42
qorz	4619.66	1.73
pojoo	2837.28	0.70
poxlp	1909.33	0.20
pomps	1806.61	0.19
qfjfg	1127.01	0.48
polymat	1015.15	0.29
qocpn	953.96	0.21
waars	825.97	1.23
potmb	704.75	0.14
qofcm	291.26	0.05
qtftp	226.76	1.22
injss	71.33	0.15
lgsgi	68.07	0.30
ekjgm	55.64	0.00
injbi	39.50	0.04
qambm	33.34	0.41
qflp	28.21	0.05
potss	16.60	0.12
qfila	15.10	0.47
wmjcd	5.71	0.28
qfala	4.63	0.01
oijbb	1.30	0.06
bcdbu	0.86	0.06
arinadm	0.29	0.00
gbm gg	0.00	0.00

Arina Data Storage Top Users

In the following graph we plot the users having more data in Arina in the last month. If you appear in this graph, we strongly encourage you to reduce your data in Arina.

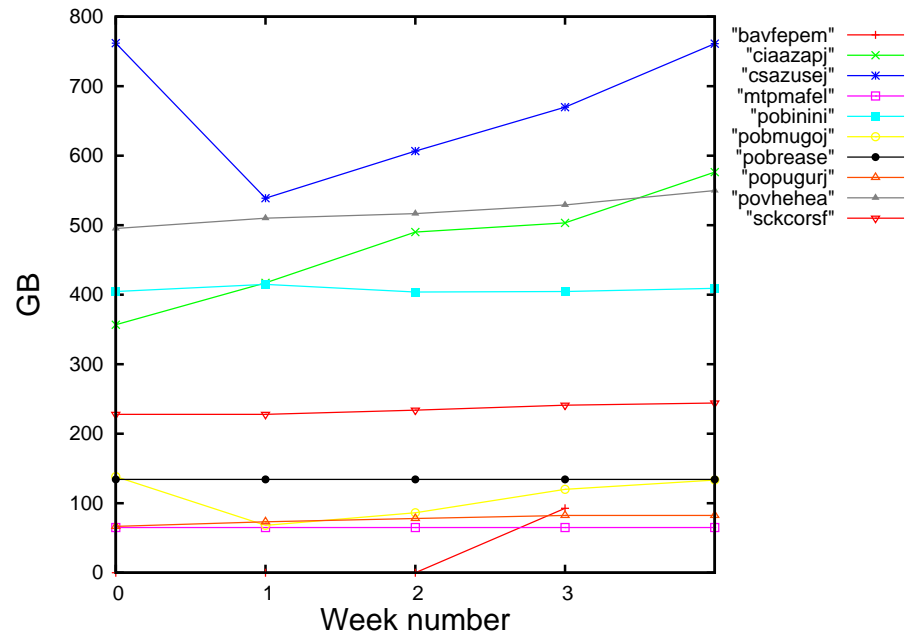


Figure 2: Storage evolution in the last month in GB.

Péndulo

This month 1386 computing days were used in **Péndulo** and the the average use of the cluster was 65 %. Since the first of December 3295 computing days were used and the the average use of the cluster was 26 %. The figure shows the usage of Péndulo along the month. In the first table the usage of each user is shown. The third column indicates all the time each user has used for calculation during this month. The fourth column shows the average time that each job was waiting before the it started running, in days units. In the second table, the same data as in table 1 collected by group is shown.

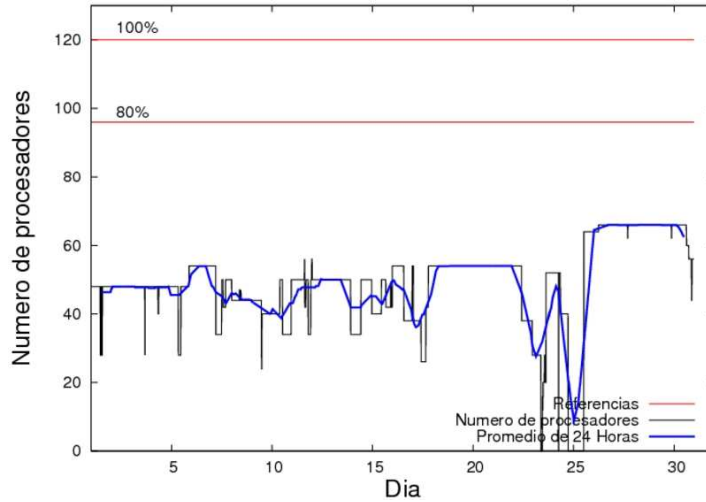


Figure 3: Cluster use. The blue line is a 24 hours average.

Table 3: Calculated time and waiting time in days of the users.

USER	GROUP	Calculated Days	Waiting Time
popugurj	pojju	1150.99	0.00
qovzaxxr	qofcm	234.69	3.70

Table 4: Calculated time and waiting time in days of the groups.

GROUP	Calculated Days	Waiting Time
pojju	1150.99	0.00
qofcm	234.69	3.70