

Estadistics for April/2013

May 7, 2013

Arina

In this brief document we show the usage of arina during April. This month 39813 computing days were used and the the average use of the cluster was 98 %. Since the first of December 170416 computing days were used and the the average use of the Arina cluster was 83 %. The figure shows the usage of Arina along the month. In the first table the usage of each user is shown. The third column indicates all the time each user has used for calculation during this month. The fourth column shows the average time that each job was waiting before the it started running, in days units. In the second table, the same data as in table 1 collected by group is shown.

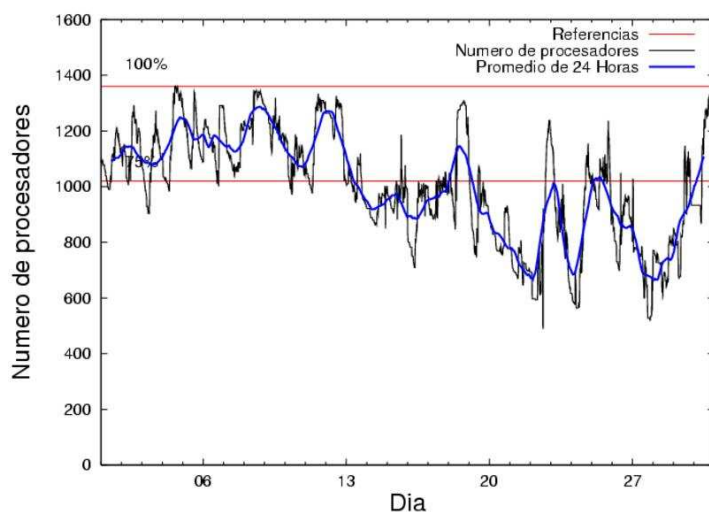


Figure 1: Cluster use. The blue line is a 24 hours average.

Table 1: Calculated time and waiting time in days of the users.

USER	GROUP	Calculated Days	Waiting Time
povhehea	poahh	8924.56	0.07
popugurj	pojuu	8082.84	0.21
sckcorsf	nanogune	4786.84	0.46
qovzaxxr	qorzz	3468.78	0.25
pobrease	potss	1684.19	0.10
ciaazapj	poxlp	1495.04	0.02
povrucif	poxlp	1413.69	0.03
bckmimoj	qfjfg	1282.67	0.06
pmarkaide001	ggmer	988.34	0.94
kibderua	qofcm	850.46	0.02
juranga004	potmb	712.57	0.05
pobinini	pojuu	703.91	0.01
pobmugoj	pojuu	600.84	0.03
quxbabai	qfjfg	551.87	0.03
qoaarecl	qofcm	509.63	0.02
pobrease	pojuu	438.06	0.05
cixesesb	poxlp	373.77	0.22
bixcobum	gbdga	324.19	0.10
qopgobee	qocpn	323.12	0.03
povpisim	pomps	321.44	0.02
qoparaya	qofcm	309.50	0.01
qfploarf	qfila	280.24	0.00
kibmeheg	pojuu	237.40	0.13
kixsasal	pojuu	149.86	0.03
favecvcp	qfjfg	123.12	0.00
webogare	arinadm	117.24	0.00
poplopex	pojuu	105.81	0.03
mapalmau	qtftp	85.18	0.01
iapgarue	iaegr	75.27	0.03
bcpremae	bcdbu	71.57	0.03
bavfepem	pojuu	70.10	0.06
sgkluqun	pojuu	50.02	0.01
wmpetali	wdaga	45.70	0.03
qobconde	qofcm	44.35	0.06
qfpesmai	qfila	36.49	0.00
quxlegoa	qfjfg	32.57	0.02
qfpmamoh	qfila	31.43	0.02
csazusej	nanogune	21.46	0.00
mapmemam	qtftp	16.83	0.00
nabzezem	nanogune	15.82	0.00
pobmelat	arinadm	15.41	0.03
waxpoxxy	waars	14.56	0.00
bcpitaia	bcizb	6.60	0.01
pobgrgrs	pojuu	6.20	0.00
inpesalg	injbi	4.85	0.00
bcpmeale	qffbe	4.84	0.01
qfbbaprj	qfila	3.19	0.00

wuppobam	wuebp	0.52	0.00
qfbloala	qfala	0.22	0.00
pobmabej	pojoo	0.08	0.00
qfxaldad	qflp	0.01	0.00
acblonou	cejla	0.01	0.00

Table 2: Calculated time and waiting time in days of the groups.

GROUP	Calculated Days	Waiting Time
pojoo	10445.10	0.09
poahh	8924.56	0.07
nanogune	4824.12	0.11
qorz	3468.78	0.25
poxlp	3282.50	0.04
qjfg	1990.23	0.05
qofcm	1713.95	0.02
potss	1684.19	0.10
gmer	988.34	0.94
potmb	712.57	0.05
qfila	351.35	0.01
gbdga	324.19	0.10
qocpn	323.12	0.03
pomps	321.44	0.02
arinadm	132.65	0.02
qtftp	102.00	0.01
iaegr	75.27	0.03
bcdbu	71.57	0.03
wdaga	45.70	0.03
waars	14.56	0.00
bcizb	6.60	0.01
injbi	4.85	0.00
qffbe	4.84	0.01
wuebp	0.52	0.00
qfala	0.22	0.00
qflp	0.01	0.00
cejla	0.01	0.00

Arina Data Storage Top Users

In the following graph we plot the users having more data in Arina in the last month. If you appear in this graph, we strongly encourage you to reduce your data in Arina.

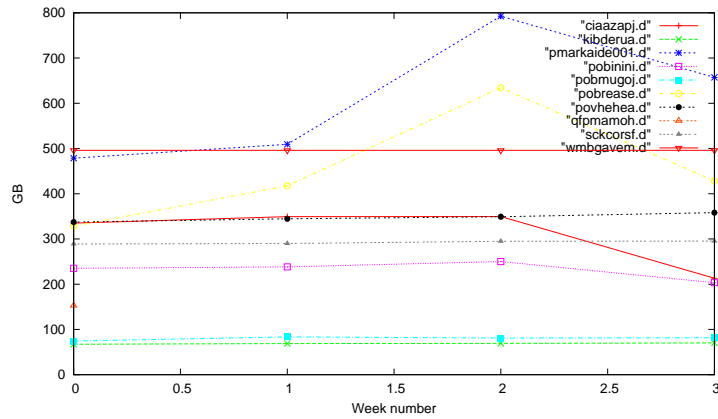


Figure 2: Storage evolution in the last month (in GB).

Péndulo

This month 93 computing days were used in **Péndulo** and the the average use of the cluster was 4 %. Since the first of December 1424 computing days were used and the the average use of the cluster was 11 %. The figure shows the usage of Péndulo along the month. In the first table the usage of each user is shown. The third column indicates all the time each user has used for calculation during this month. The fourth column shows the average time that each job was waiting before the it started running, in days units. In the second table, the same data as in table 1 collected by group is shown.

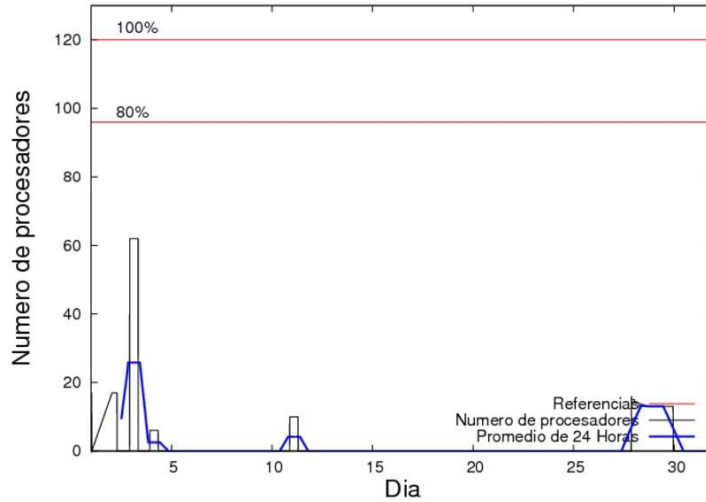


Figure 3: Cluster use. The blue line is a 24 hours average.

Table 3: Calculated time and waiting time in days of the users.

USER	GROUP	Calculated Days	Waiting Time
mtpmafel	mtgfa	92.88	0.18

Table 4: Calculated time and waiting time in days of the groups.

GROUP	Calculated Days	Waiting Time
mtgfa	92.88	0.18

Ikerbasque machine

The service has access to 208 xeon cores in this machine, which are older than Arina's ones. The codes of only few big users are maintained there to optimize the maintenance time. This month 929 computing days were used in **Ikerbasque** machine and the the average use of the cluster was 15 %. Since the first of December 23077 computing days were used and the the average use of the cluster was 73 %. In the first table the usage of each user is shown. The third column indicates all the time each user has used for calculation during this month. The fourth column shows the average time that each job was waiting before the it started running, in days units. In the second table, the same data as in table 1 collected by group is shown.

Table 5: Calculated time and waiting time in days of the users.

USER	GROUP	Calculated Days	Waiting Time
scpzuola	qorzz	480.0	0.00
pobmugoj	pojju	412.9	0.00
pobmelat	arinadm	2.2	0.00
webogare	arinadm	34.2	0.00

Table 6: Calculated time and waiting time in days of the groups.

GROUP	Calculated Days	Waiting Time
qorzz	480.0	0.00
pojju	412.9	0.00
arinadm	36.4	0.0