

Estadistics for April/2012

May 17, 2012

Arina

In this brief document we show the usage of arina during April. This month 31045 computing days where used and the the average use of the cluster was 74 %. Since the first of December 145116 computing days where used and the the average use of the cluster was 69 %. The figure shows the usage of Arina along the month. In the first table the usage of each user is shown. The third column indicates all the time each user has used for calculation during this month. The fourth column shows the average time that each job was waiting before the it started running, in days units. In the second table, the same data as in table 1 collected by group is shown.

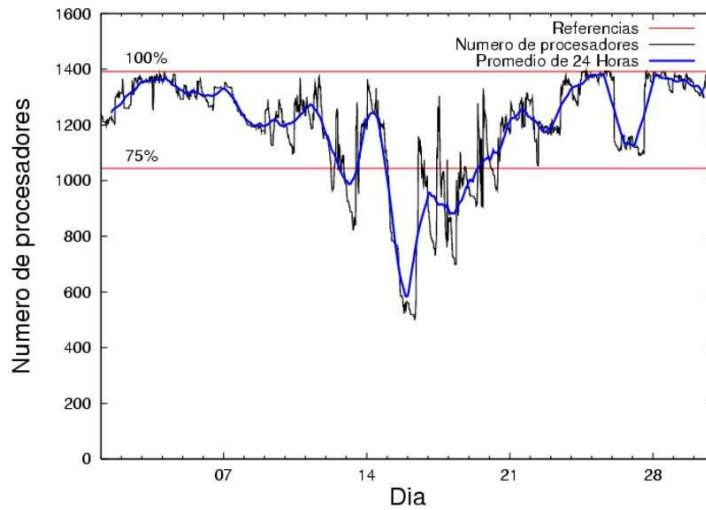


Figure 1: Cluster use. The blue line is a 24 hours average.

Table 1: Calculated time and waiting time in days of the users.

USER	GROUP	Calculated Days	Waiting Time
kibpapaa	qorzz	4272.07	0.51
scpzuola	qorzz	3857.69	0.98
favcopee	qfjfg	2972.54	0.53
povhehea	poahh	2899.63	0.97
qoaarecl	qofcm	2002.38	0.18
popugurj	pojju	1675.50	0.05
cixesesb	poxlp	1578.25	0.08
poalog	poxlp	1543.86	1.29
povwawaj	pojju	1226.45	0.63
pobrease	potss	1210.47	0.19
kibmeheg	pojju	1140.60	0.35
wmbgavem	waets	957.62	0.18
qopgobee	qocpn	942.14	0.05
qfbleoni	qfjfg	817.94	0.17
pobrease	pojju	482.99	1.78
nabzezem	nanogune	327.36	0.20
ciaazapj	poxlp	289.58	0.07
pobmabej	pojju	234.76	0.01
qobconde	qofcm	210.82	0.08
quxlegoa	qfjfg	196.56	0.77
qopcomof	qofcm	166.09	0.00
quxbabai	qfjfg	157.87	0.01
kibderua	qofcm	151.86	0.02
sckcorsf	nanogune	144.94	0.09
mapmemam	qtftp	134.32	0.03
pobmugoj	pojju	131.68	0.04
povrucif	poxlp	129.17	0.01
pobinini	pojju	120.29	0.02
kixsasal	pojju	112.62	0.04
favecvep	qfjfg	107.93	0.15
bckmimoj	qfjfg	105.41	0.08
qfpmamoh	qfila	98.96	0.01
qovzaxxr	qorzz	83.56	0.36
pobmelat	arinadm	82.81	0.08
poblairo	poxlp	77.03	0.01
wabeslel	waars	72.65	0.05
qfploarf	qfila	71.94	0.02
wapesnuv	wakgg	53.73	0.18
bcpitaia	bcizb	52.74	0.00
bcpremae	bcdbu	37.35	0.08
qobmimuj	lgsgi	28.45	0.02
iapgarue	iaegr	18.54	0.04
sckwankm	waars	16.10	0.03
qoparaya	qofcm	13.66	0.01
qfpesmai	qfila	8.33	0.18
mapalmau	magps	7.07	0.02
wapgoesj	wakgg	6.13	0.05

poplopex	pojoo	5.91	0.01
bcpfmaa	mimam	3.50	0.00
lebtobaa	leaie	2.86	0.00
pobgrgrs	pojoo	1.09	0.02
qoprualg	qofpg	0.87	0.00
jtpanlod	jtjob	0.25	0.00
jtppragg	jtjob	0.00	0.00

Table 2: Calculated time and waiting time in days of the groups.

GROUP	Calculated Days	Waiting Time
qorzz	8213.32	0.68
pojoo	5131.88	0.09
qfjfg	4358.26	0.37
poxlp	3617.88	0.12
poahh	2899.63	0.97
qofcm	2544.80	0.07
potss	1210.47	0.19
waets	957.62	0.18
qocpn	942.14	0.05
nanogune	472.31	0.14
qfila	179.23	0.03
qtftp	134.32	0.03
waars	88.75	0.05
arinadm	82.81	0.08
wakgg	59.85	0.09
bcizb	52.74	0.00
bcdbu	37.35	0.08
lgsgi	28.45	0.02
iaegr	18.54	0.04
magps	7.07	0.02
mimam	3.50	0.00
leaie	2.86	0.00
qofpg	0.87	0.00
jtjob	0.25	0.00

Pendolo

This month 191 computing days were used in **Pendolo** and the the average use of the cluster was 9 %. Since the first of December 514 computing days were used and the the average use of the cluster was 4 %. The figure shows the usage of Pendolo along the month. In the first table the usage of each user is shown. The third column indicates all the time each user has used for calculation during this month. The fourth column shows the average time that each job was waiting before the it started running, in days units. In the second table, the same data as in table 1 collected by group is shown.

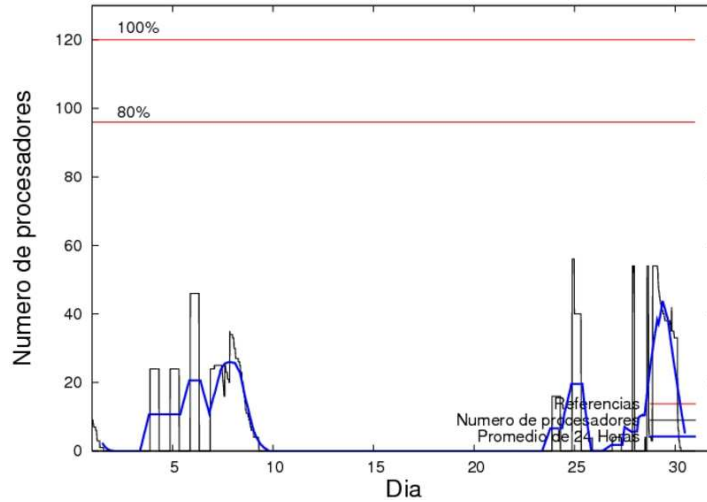


Figure 2: Cluster use. The blue line is a 24 hours average.

Table 3: Calculated time and waiting time in days of the users.

USER	GROUP	Calculated Days	Waiting Time
jtppragg	jtjob	122.71	0.06
jtpanlod	jtjob	59.48	0.05
qfpmamoh	qfila	8.40	0.22

Table 4: Calculated time and waiting time in days of the groups.

GROUP	Calculated Days	Waiting Time
jtjob	182.20	0.06
qfila	8.40	0.22

Ikerbasque machine

The service has access to 208 xeon cores in this machine, which are older than Arina's ones. The codes of only few big users are maintained there to optimize the maintenance time. This month 4036 computing days were used in **Ikerbasque** machine and the the average use of the cluster was 65 %. Since the first of December 14869 computing days were used and the the average use of the cluster was 47 %. In the first table the usage of each user is shown. The third column indicates all the time each user has used for calculation during this month. The fourth column shows the average time that each job was waiting before the it started running, in days units. In the second table, the same data as in table 1 collected by group is shown.

Table 5: Calculated time and waiting time in days of the users.

USER	GROUP	Calculated Days	Waiting Time
kibpapaa	qorzz	1747.98	2.24
scpzuola	qorzz	1593.23	0.68
pobmugoj	pojuu	694.72	0.00

Table 6: Calculated time and waiting time in days of the groups.

GROUP	Calculated Days	Waiting Time
qorzz	3341.21	1.37
pojuu	694.72	0.00