

Estadistics for April/2011

May 1, 2011

Arina

In this brief document we show the usage of arina during April. This month 15829 computing days were used and the the average use of the cluster was 70 %. Since the first of June 86431 computing days were used and the the average use of the cluster was 76 %. The figure shows the usage of Arina along the month. In the first table the usage of each user is shown. The third column indicates all the time each user has used for calculation during this month. The fourth column shows the average time that each job was waiting before the it started running, in days units. In the second table, the same data as in table 1 collected by group is shown.

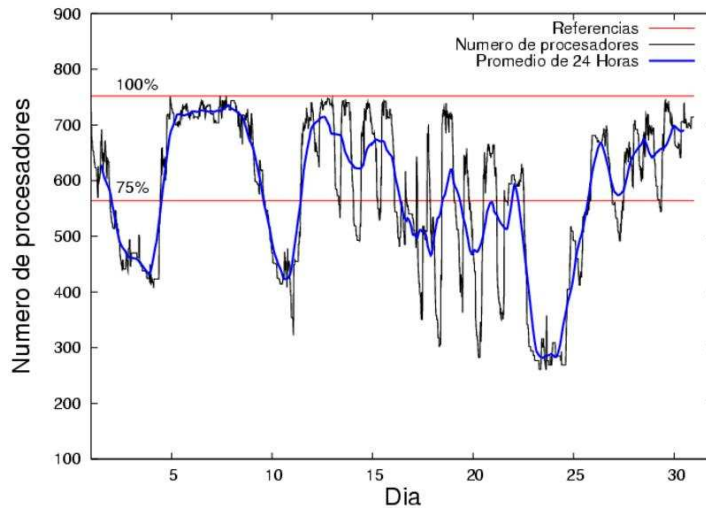


Figure 1: Cluster use. The blue line is a 24 hours average.

Table 1: Calculated time and waiting time in days of the users.

| USER | GROUP | Calculated Days | Waiting Time |
|----------|----------|-----------------|--------------|
| povhehea | poahh | 4891.16 | 0.12 |
| wmbgavem | waets | 1518.80 | 0.11 |
| pobrease | potss | 1002.69 | 0.09 |
| qoaarecl | qofcm | 972.74 | 0.28 |
| povwawaj | pojju | 913.50 | 0.16 |
| qfbleoni | qffca | 684.80 | 0.14 |
| kibderua | qofcm | 669.54 | 0.13 |
| waptctce | waets | 652.96 | 0.06 |
| pobmugoj | pojju | 592.67 | 0.02 |
| qopgobee | qocpn | 490.41 | 0.05 |
| scpzuola | qorzz | 486.98 | 0.08 |
| qovzaxxr | qorzz | 443.05 | 0.28 |
| favcopee | qfjfg | 427.06 | 0.32 |
| pobmelat | arinadm | 382.01 | 0.05 |
| pobgrgrs | pojju | 352.28 | 0.05 |
| povrucif | poxlp | 342.97 | 0.09 |
| quxlegoa | qfjfg | 193.92 | 0.16 |
| bckmimoj | qfjfg | 186.12 | 0.02 |
| ciaazapj | poxlp | 114.96 | 0.00 |
| poalolog | poxlp | 75.73 | 0.19 |
| poblairo | poxlp | 72.66 | 0.11 |
| ggpsamam | ggmer | 72.09 | 0.07 |
| pobrease | pojju | 67.35 | 0.12 |
| wabeslel | waars | 57.86 | 0.04 |
| poplopex | pojju | 53.02 | 0.09 |
| inpesalg | injbi | 43.14 | 0.04 |
| favecvep | qfjfg | 38.55 | 0.07 |
| kixmagre | poxlp | 8.48 | 0.00 |
| webogare | arinadm | 7.45 | 0.01 |
| qfbbaprj | qfila | 4.74 | 0.01 |
| baxakake | poxlp | 3.23 | 0.11 |
| ikasle01 | pomaster | 2.67 | 0.00 |
| bcpdiaro | zoicu | 1.85 | 0.00 |
| mapmemam | qtftp | 1.83 | 0.01 |
| pobmabej | pojju | 0.10 | 0.00 |
| wuppobam | wuebp | 0.08 | 0.02 |
| iqpgarue | iqegr | 0.06 | 0.00 |
| wabgalaj | waars | 0.04 | 0.00 |
| waxpoxxy | waars | 0.01 | 0.01 |

Table 2: Calculated time and waiting time in days of the groups.

| GROUP | Calculated Days | Waiting Time |
|----------|-----------------|--------------|
| poahh | 4891.16 | 0.12 |
| waets | 2171.76 | 0.08 |
| pojuu | 1978.93 | 0.09 |
| qofcm | 1642.28 | 0.20 |
| potss | 1002.69 | 0.09 |
| qorzz | 930.03 | 0.24 |
| qfjfg | 845.65 | 0.15 |
| qffca | 684.80 | 0.14 |
| poxlp | 618.04 | 0.08 |
| qocpn | 490.41 | 0.05 |
| arinadm | 389.46 | 0.04 |
| ggmer | 72.09 | 0.07 |
| waars | 57.91 | 0.04 |
| injbi | 43.14 | 0.04 |
| qfila | 4.74 | 0.01 |
| pomaster | 2.67 | 0.00 |
| zoicu | 1.85 | 0.00 |
| qtftp | 1.83 | 0.01 |
| wuebp | 0.08 | 0.02 |
| iqegr | 0.06 | 0.00 |

Pendolo

This month 858 computing days were used in **Pendolo** and the the average use of the cluster was 40 %. Since the first of December 2050 computing days were used and the the average use of the cluster was 16 %. The figure shows the usage of Pendolo along the month. In the first table the usage of each user is shown. The third column indicates all the time each user has used for calculation during this month. The fourth column shows the average time that each job was waiting before the it started running, in days units. In the second table, the same data as in table 1 collected by group is shown.

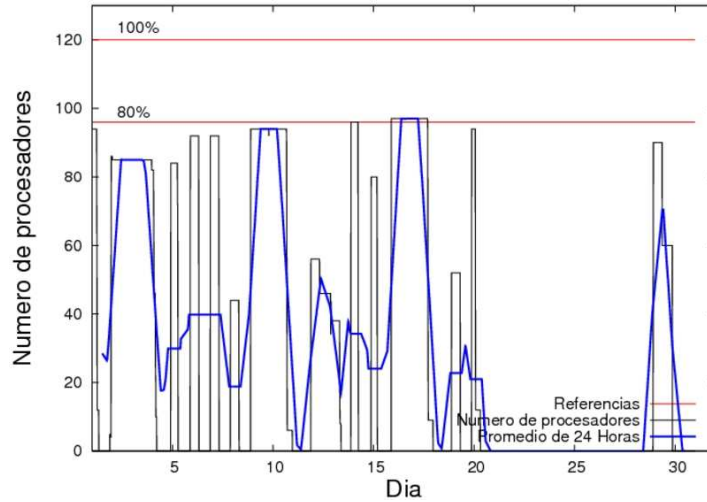


Figure 2: Cluster use. The blue line is a 24 hours average.

Table 3: Calculated time and waiting time in days of the users.

| USER | GROUP | Calculated Days | Waiting Time |
|----------|-------|-----------------|--------------|
| qovzaxxr | qofcm | 816.52 | 2.54 |
| mtpmafel | mtgfa | 37.65 | 1.02 |
| kixmagre | poxlp | 4.17 | 0.08 |

Table 4: Calculated time and waiting time in days of the groups.

| GROUP | Calculated Days | Waiting Time |
|-------|-----------------|--------------|
| qofcm | 816.52 | 2.54 |
| mtgfa | 37.65 | 1.02 |
| poxlp | 4.17 | 0.08 |