

# Estadistics for March/2019

April 1, 2019

## Arina

In this brief document we show the usage of arina during March. This month 88800 computing days were used and the the average use of the cluster was 77 %. Since the first of December 374967 computing days were used and the the average use of the Arina cluster was 83 %. The figure shows the usage of Arina along the month. In the first table the usage of each user is shown. The third column indicates all the time each user has used for calculation during this month. The fourth column shows the average time that each job was waiting before the it started running, in days units. In the second table, the same data as in table 1 collected by group is shown.

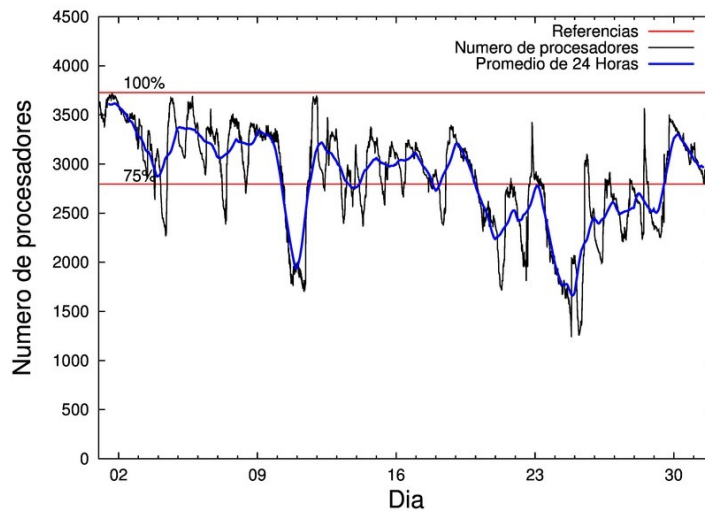


Figure 1: Cluster use. The blue line is a 24 hours average.

Table 1: Calculated time and waiting time in days of the users.

USER	GROUP	Calculated Days	Waiting Time
qovzaxxr	polymat	14845.02	0.13
poaganau	polymat	11005.26	0.34
enxcacaj	egune	7996.69	0.24
quxtaxxs	polymat	7597.05	0.14
povhehea	poahh	7379.51	0.18
povwawaj	pojuu	6498.33	0.09
poagafrm	pojuu	3820.56	0.26
pobmabej	potmb	3056.88	0.01
pobladej	poxlp	3038.08	0.02
sckahnom	potmb	2234.13	0.04
povpisim	pomps	1818.18	0.00
popporiv	poxlp	1579.90	0.08
faacalea	qfjfg	1468.44	0.01
povrucif	polymat	1161.89	0.01
quaduree	qfila	1074.87	0.03
poplopex	pojuu	1011.60	0.01
poarloi	pojuu	960.42	0.02
pobgrgrs	pomps	884.18	0.03
csazusej	nanogune	862.76	0.08
bcpliolj	bgjbp	817.33	0.04
kibderua	qofcm	771.72	0.00
naplodud	nanogune	723.29	0.00
poaugbia	pojuu	675.02	0.01
qopgobee	qocpn	657.05	0.00
dixsasam	pojuu	633.29	0.00
poairurm	polymat	633.26	0.06
bixbrdem	gbdga	533.38	2.25
bgbalurm	bgjbp	498.34	0.00
poamaxg	polymat	487.17	0.11
pobrease	potmb	467.97	0.00
doxcarei	poemg	415.85	0.06
poanacuj	polymat	373.52	0.01
fabusgui	qfjfg	347.51	0.00
quamearx	qfila	329.33	-0.51
qobcacea	qocpn	238.53	0.00
ciaansap	pojuu	216.59	0.00
pobfoese	poxlp	200.44	0.00
ciaolarb	pojuu	194.26	0.00
ciaalece	pojuu	160.28	0.00
kibderua	qoabl	129.47	0.00
povmieci	pojuu	125.86	0.00
pobmugoj	pomps	121.76	0.00
qfpbapri	qfila	113.18	0.00
quxlegoa	qfjfg	83.84	0.04
qobsalae	qambm	74.82	0.00
poaurura	poxlp	68.47	0.00
qfpesmai	qfila	39.81	0.00

qoparaya	qofcm	39.05	0.00
pobluluv	poxlp	25.04	0.00
qubcaxxc	qfjfg	23.99	0.02
quaqugaj	qfila	23.73	0.00
dibxuxux	poxlp	23.71	0.00
qopcomof	qofcm	23.48	0.00
bckmimoj	qfjfg	23.38	0.00
wepgopej	wejcm	22.45	0.27
pobmelat	arinadm	20.03	0.10
kiasomal	qocpn	16.73	0.00
ciazuulm	pojoo	16.29	0.00
qfbolsaa	qfila	15.97	0.00
bcpremae	bcdbu	14.36	0.00
pobcacad	pojoo	13.86	0.00
qobpamap	qocpn	12.52	0.00
quainbea	qfjfg	12.18	0.00
kiadadag	pojoo	7.47	0.01
popugurj	pojoo	7.38	0.55
poasibrd	poxlp	6.94	0.00
qfpmamav	qfila	5.36	0.00
qoprualg	qofpg	4.68	0.00
enxararo	egune	3.63	0.00
quxmarur	qfjfg	3.42	0.61
qobzazag	qocpn	2.78	0.00
webogare	arinadm	2.72	0.00
ikasle03	pomaster	2.25	0.00
inagaaro	oijgc	1.06	0.00
poazago	potmb	0.89	0.00
quavagas	qfjfg	0.83	0.00
pobtxe01	poxlp	0.26	0.00
oibargia	oijgc	0.19	0.00
faaatnaa	faraz	0.19	0.00
anpbicaj	anjbc	0.07	0.00
scavinam	poemg	0.05	0.00
kixsasal	pojoo	0.05	0.00
ikasle02	pomaster	0.03	0.04
ikasle09	pomaster	0.01	0.01
anbgejin	anjbc	0.01	0.00
wepgaara	weaga	0.00	0.00
poblacoj	pojoo	0.00	0.00
ikasle15	pomaster	0.00	0.01
ikasle14	pomaster	0.00	0.03
ikasle13	pomaster	0.00	0.04
ikasle12	pomaster	0.00	0.01
ikasle11	pomaster	0.00	0.03
ikasle10	pomaster	0.00	0.02
ikasle08	pomaster	0.00	0.04
ikasle07	pomaster	0.00	0.01
ikasle06	pomaster	0.00	0.02
ikasle05	pomaster	0.00	0.03

ikasle04	pomaster	0.00	0.02
ikasle01	pomaster	0.00	0.00

Table 2: Calculated time and waiting time in days of the groups.

GROUP	Calculated Days	Waiting Time
polymat	36103.16	0.08
pojoo	14341.26	0.03
egune	8000.32	0.24
poahh	7379.51	0.18
potmb	5759.86	0.02
poxlp	4942.84	0.01
pomps	2824.12	0.01
qfjfg	1963.59	0.01
qfila	1602.25	-0.51
nanogune	1586.05	0.01
bgjbp	1315.67	0.01
qocpn	927.61	0.00
qofcm	834.25	0.00
gbdga	533.38	2.25
poemg	415.90	0.01
qoabl	129.47	0.00
qambm	74.82	0.00
arinadm	22.75	0.07
wejcm	22.45	0.27
bcdbu	14.36	0.00
qofpg	4.68	0.00
pomaster	2.32	0.01
oijgc	1.25	0.00
faraz	0.19	0.00
anjbc	0.08	0.00
weaga	0.00	0.00

## Arina Data Storage Top Users

In the following graph we plot the users having more data in Arina in the last month. If you appear in this graph, we strongly encourage you to reduce your data in Arina.

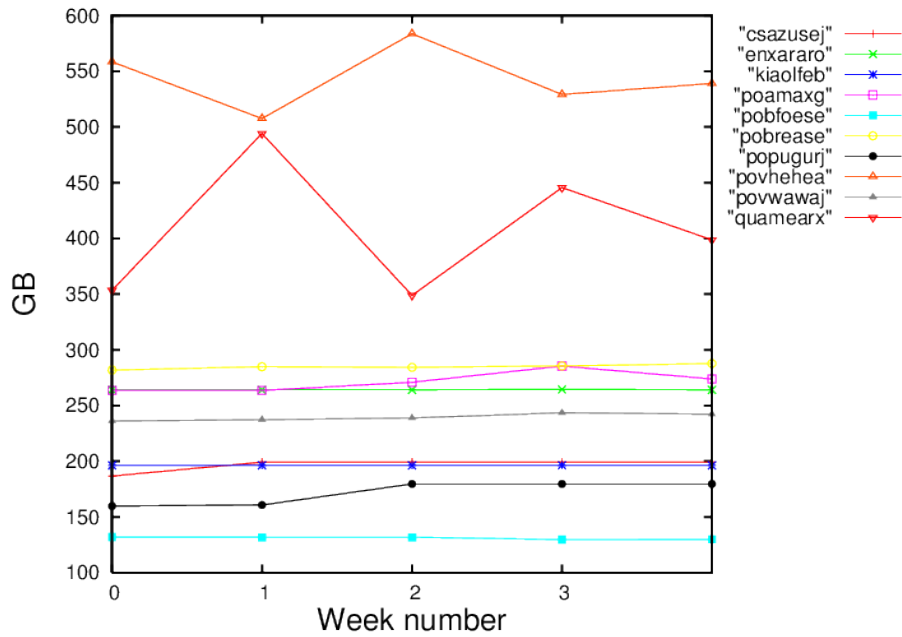


Figure 2: Storage evolution in the last month in GB.