

# Estadistics for March/2018

April 1, 2018

## Arina

In this brief document we show the usage of arina during March. This month 102160 computing days were used and the average use of the cluster was 89 %. Since the first of December 328508 computing days were used and the average use of the Arina cluster was 73 %. The figure shows the usage of Arina along the month. In the first table the usage of each user is shown. The third column indicates all the time each user has used for calculation during this month. The fourth column shows the average time that each job was waiting before the it started running, in days units. In the second table, the same data as in table 1 collected by group is shown.

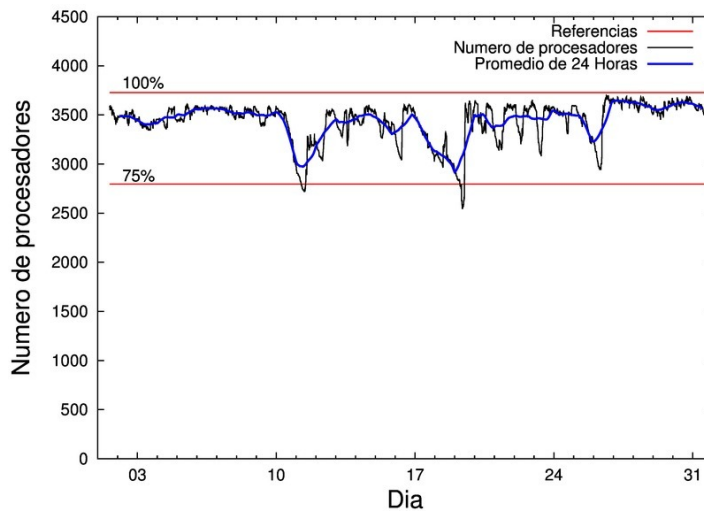


Figure 1: Cluster use. The blue line is a 24 hours average.

Table 1: Calculated time and waiting time in days of the users.

USER	GROUP	Calculated Days	Waiting Time
scavinam	poemg	14715.90	0.50
qovzaxxr	polymat	14552.41	1.27
povhehea	poahh	8516.75	0.65
povwawaj	pojoo	6001.52	0.60
povpisim	pomps	5977.86	0.10
poamaxg	polymat	5695.48	0.68
kiadadag	pojoo	3878.28	0.32
pobmugoj	pomps	3233.16	0.10
poairurm	polymat	3006.27	0.10
enblairo	egune	2897.10	0.92
enxararo	egune	2735.57	0.25
pobmabej	potmb	2685.50	0.07
enbxilij	egune	2171.30	0.61
dixsasam	pojoo	2128.01	0.25
fabusgui	qfjfg	2074.04	1.10
qopgobee	qocpn	2024.95	0.03
quarafam	qfjfg	1851.59	0.54
quamearx	qfila	1835.53	0.00
poaugbia	pojoo	1812.74	0.53
pobgrgrs	pomps	1582.68	0.17
poajejec	polymat	1543.53	0.10
poarugua	pojoo	1537.46	0.14
naaruore	nanogune	1348.94	0.18
pobladej	poxlp	1289.78	0.18
povrucif	polymat	1242.70	0.33
doxcarei	poemg	931.85	0.14
popugurj	pojoo	746.82	0.04
fablozoj	qfila	522.71	0.02
poalocad	polymat	444.08	0.06
qfpmamoh	qfila	384.02	0.10
quxtaxxs	polymat	373.74	0.00
qobpamap	qocpn	348.47	0.01
kiasomal	qocpn	334.81	0.01
qfbleoni	qfjfg	249.68	0.44
qoprualg	qofpg	227.49	0.01
kibderua	qofcm	180.02	0.11
favcopee	qfjfg	141.67	0.05
pobcad	pojoo	109.58	0.07
faavzae	qfila	97.05	0.00
qfbbaprj	qfila	84.06	0.00
qobzazag	qocpn	66.16	0.02
poafesaa	pojoo	66.11	0.09
poaszsze	poxlp	64.43	0.00
scpridei	qofcm	48.04	0.01
qobsalae	qambm	48.03	0.05
iaretxabalet002	bgjal	44.52	0.06
wapgoesj	wakgg	44.22	0.02

poainugn	pojoo	40.44	0.05
bixbrdem	gbdga	40.19	0.02
kiateanm	qocpn	30.30	0.01
favecvep	qfjfg	29.19	0.50
pobrease	potmb	23.41	0.05
qobconde	qofcm	20.97	0.01
faacalea	qfjfg	16.15	0.04
poarloi	pojoo	13.62	0.09
qoparaya	qofcm	10.56	0.00
quxlegoa	qfjfg	10.00	0.04
pobsisis	pomps	8.18	0.00
webogare	arinadm	5.55	0.24
quaduree	qfila	3.45	0.01
kiaurbao	poxlp	2.64	0.00
juranga004	potmb	1.99	0.00
quaqugaj	qfila	1.96	0.00
pobfoese	poxlp	1.27	0.21
kiaolfeb	potss	1.04	0.03
qopcomof	qofcm	0.95	0.00
poasibrd	poxlp	0.75	0.01
poadoodj	potmb	0.74	0.07
qfpesmai	qfila	0.32	0.00
ciazuulm	pojoo	0.11	0.00
poatealx	pojoo	0.04	0.01
sgibaasj	vgsgi	0.03	0.00
pobmelat	arinadm	0.02	0.00
improagj	imfmg	0.01	0.00
mtpmafel	mtgfa	0.00	0.00

---

Table 2: Calculated time and waiting time in days of the groups.

GROUP	Calculated Days	Waiting Time
polymat	26858.21	0.33
pojoo	16334.73	0.29
poemg	15647.75	0.42
pomps	10801.87	0.10
poahh	8516.75	0.65
egune	7803.97	0.63
qfjfg	4372.33	0.50
qfila	2929.11	0.00
qocpn	2804.69	0.02
potmb	2711.65	0.06
poxlp	1358.86	0.08
nanogune	1348.94	0.18
qofcm	260.55	0.02
qofpg	227.49	0.01
qambm	48.03	0.05
bgjal	44.52	0.06
wakgg	44.22	0.02
gbdga	40.19	0.02
arinadm	5.57	0.22
potss	1.04	0.03
vgsgi	0.03	0.00
imfing	0.01	0.00
mtgfa	0.00	0.00

## Arina Data Storage Top Users

In the following graph we plot the users having more data in Arina in the last month. If you appear in this graph, we strongly encourage you to reduce your data in Arina.

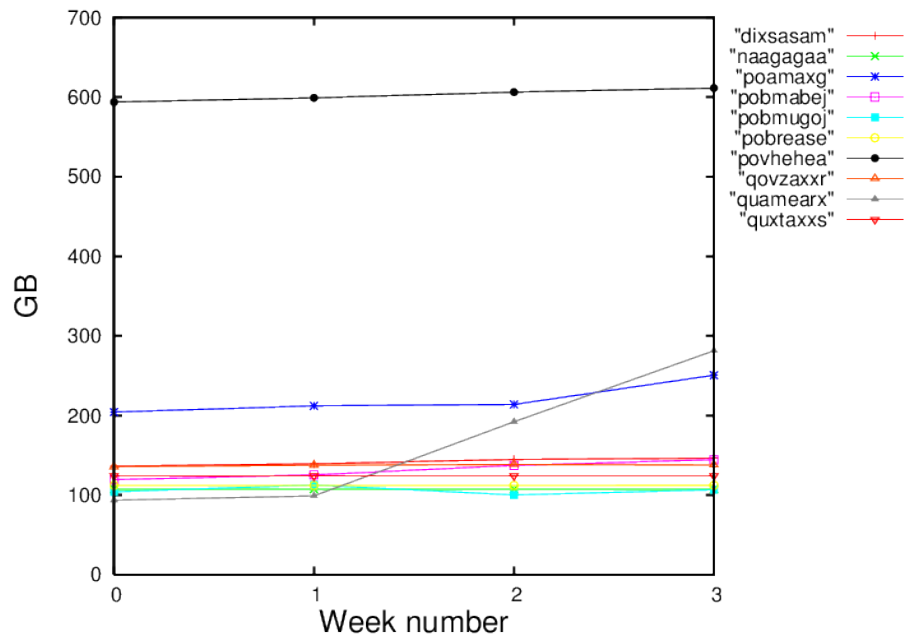


Figure 2: Storage evolution in the last month in GB.