

Estadistics for March/2017

May 2, 2017

Arina

In this brief document we show the usage of arina during March. This month 54441 computing days were used and the the average use of the cluster was 94 %. Since the first of December 193048 computing days were used and the the average use of the Arina cluster was 85 %. The figure shows the usage of Arina along the month. In the first table the usage of each user is shown. The third column indicates all the time each user has used for calculation during this month. The fourth column shows the average time that each job was waiting before the it started running, in days units. In the second table, the same data as in table 1 collected by group is shown.

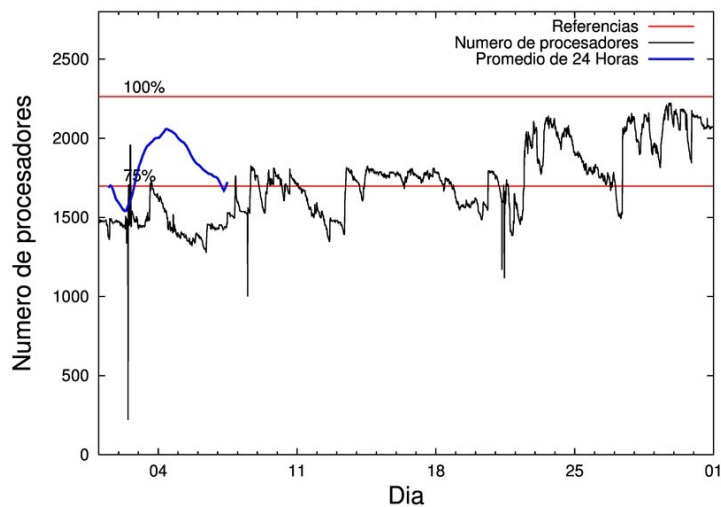


Figure 1: Cluster use. The blue line is a 24 hours average.

Table 1: Calculated time and waiting time in days of the users.

USER	GROUP	Calculated Days	Waiting Time
favcopee	qfjfg	6917.57	6.53
povhehea	poahh	5584.62	2.47
csazusej	nanogune	4266.93	0.25
poalocad	polymat	2571.84	0.52
scavinam	poemg	2561.66	0.11
kixgrazr	potmb	1902.12	0.89
faacalea	qfjfg	1887.13	0.82
quntaxxs	polymat	1825.77	0.63
pobmabej	potmb	1694.37	0.12
qfpmamoh	qfila	1651.12	0.14
kiadadag	pojoo	1461.42	1.03
povrucif	polymat	1435.49	0.36
qovzaxxr	polymat	1427.61	0.27
quaasanm	qfjfg	1395.45	6.18
pobrease	potmb	1267.75	1.02
pobrease	polymat	1241.01	0.20
favecvep	qfjfg	1111.50	1.32
poamaxg	polymat	1079.25	0.48
pobmugoj	pomps	920.84	0.28
poppisim	pomps	847.93	0.45
juranga004	potmb	809.66	0.26
quainbea	qfjfg	789.45	0.70
poaganau	polymat	761.60	1.81
qopgobee	qocpn	710.03	0.11
poajejec	polymat	693.74	0.11
qfjbaprij	qfila	560.69	0.19
kibderua	qofcm	499.45	0.05
pmarkaide001	ggmer	496.83	1.15
pobfoese	polymat	474.03	0.20
quvvalom	qfjfg	421.84	2.75
mapmemam	megps	398.09	0.36
quxmarur	qfjfg	361.83	1.64
qoaarecl	qofcm	310.01	0.12
kiasomal	qocpn	292.68	0.09
doxcarei	poemg	268.10	0.43
qfbgoroj	qfjfg	258.43	0.27
poarloi	pojoo	250.61	0.25
qopcomof	qofcm	221.61	0.01
poagafrm	pojoo	203.56	0.24
qobsalae	qambm	199.73	0.11
mapalmau	megps	198.80	0.33
poanacuj	polymat	181.45	0.25
pobmelat	arinadm	177.48	0.10
kiaurbao	poxlp	171.60	0.70
bckmimoj	qfjfg	169.81	0.50
dixsasam	pojoo	163.10	0.24
enxararo	egune	152.14	0.09

quaqugaj	qfila	149.39	0.10
qoparaya	qofcm	144.75	0.12
wmpetali	wdaga	117.43	0.55
pobgrgrs	pomps	103.79	0.07
fabusgui	qfjfg	86.39	0.41
faavzae	qfila	73.74	0.26
faaatnaa	faraz	70.52	0.12
anpgaetk	anjbc	69.93	0.08
quaurhei	qfjfg	63.85	0.15
ciairaim	poxlp	63.39	0.37
bgpiznaj	faraz	55.71	0.02
kixsasal	pojju	47.32	0.09
wubcavaa	wuash	38.18	0.22
bcpitaia	bcizb	28.41	0.01
qfacaarm	qfila	28.08	0.03
scpridei	qofcm	23.67	0.04
wepgaara	weaga	19.77	0.15
pobfoese	poxlp	13.95	0.21
bixbrdem	gbdga	13.06	0.03
acplaing	jiads	11.60	0.01
qfbleoni	qfjfg	5.48	0.25
poplopex	pojju	3.68	0.05
quamasal	qfjfg	2.87	0.12
webogare	arinadm	1.11	0.04
ciazuulm	pojju	1.02	0.46
enxcacaj	egune	0.83	0.02
bczabgab	casgi	0.60	0.00
ggabacai	ggmer	0.36	0.21
quaduree	qfila	0.00	0.00
pobeieit	poxlp	0.00	0.17
ikasle12	pomaster	0.00	0.20
ikasle11	pomaster	0.00	0.01

Table 2: Calculated time and waiting time in days of the groups.

GROUP	Calculated Days	Waiting Time
qfjfg	13471.60	1.77
polymat	11691.80	0.48
potmb	5673.90	0.27
poahh	5584.62	2.47
nanogune	4266.93	0.25
poemg	2829.76	0.12
qfila	2463.02	0.12
pojju	2130.71	0.43
pomps	1872.55	0.28
qofcm	1199.50	0.08
qocpn	1002.70	0.10
megps	596.90	0.35
ggmer	497.19	1.11
poxlp	248.95	0.59
qambm	199.73	0.11
arinadm	178.59	0.09
egune	152.97	0.08
faraz	126.23	0.08
wdaga	117.43	0.55
anjbc	69.93	0.08
wuash	38.18	0.22
bcizb	28.41	0.01
weaga	19.77	0.15
gbdga	13.06	0.03
jiads	11.60	0.01
casgi	0.60	0.00
pomaster	0.00	0.10

Arina Data Storage Top Users

In the following graph we plot the users having more data in Arina in the last month. If you appear in this graph, we strongly encourage you to reduce your data in Arina.

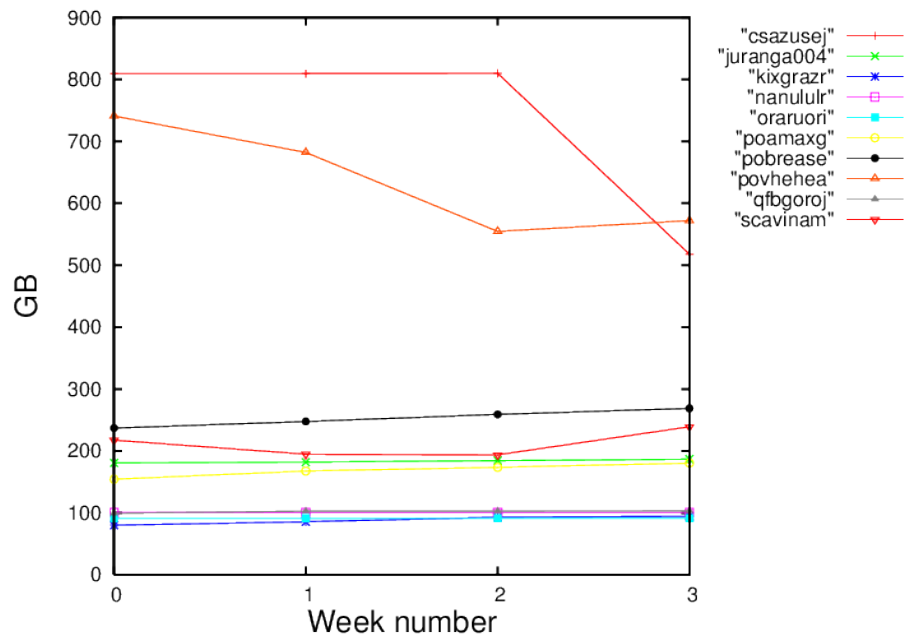


Figure 2: Storage evolution in the last month in GB.