

Estadistics for March/2016

April 21, 2016

Arina

In this brief document we show the usage of arina during March. This month 53842 computing days where used and the the average use of the cluster was 92 %. Since the first of December 207106 computing days where used and the the average use of the Arina cluster was 91 %. The figure shows the usage of Arina along the month. In the first table the usage of each user is shown. The third column indicates all the time each user has used for calculation during this month. The fourth column shows the average time that each job was waiting before the it started running, in days units. In the second table, the same data as in table 1 collected by group is shown.

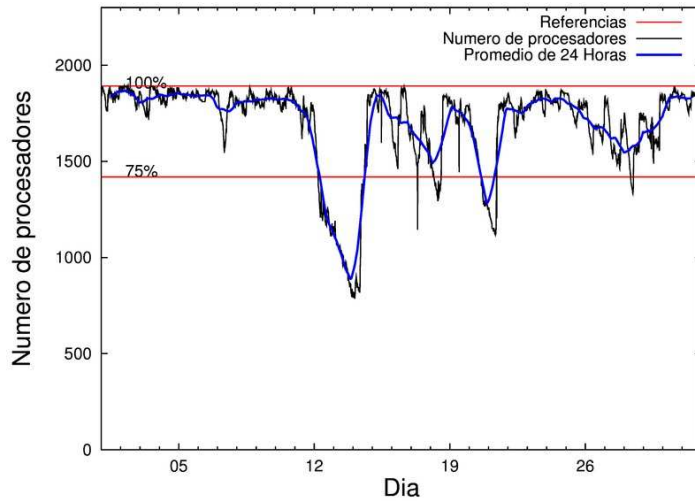


Figure 1: Cluster use. The blue line is a 24 hours average.

Table 1: Calculated time and waiting time in days of the users.

USER	GROUP	Calculated Days	Waiting Time
povhehea	poahh	7488.59	0.69
bckmimoj	qfjfg	6679.64	0.51
qfbgoroj	qfjfg	4986.95	0.45
kivpepor	kirpp	4718.60	0.22
fabusgui	qfjfg	3062.26	2.27
pobmugoj	pomps	2965.38	0.11
gbpbeseg	gbavm	2801.24	0.05
poalocad	polymat	2396.39	0.07
pobmabej	potmb	1716.19	0.09
kiasomal	qocpn	1405.30	0.16
juranga004	potmb	1200.19	0.13
quaurhei	qfjfg	1180.70	0.29
povpisim	pomps	1059.77	0.50
povrucif	polymat	1035.76	0.29
poagiaie	pojju	989.50	0.16
csazusej	nanogune	952.80	0.13
popugurj	pojju	770.29	0.04
qopgobee	qocpn	753.59	0.01
kiaolfeb	qocpn	735.39	0.10
kibderua	qofcm	699.47	0.02
qoaarecl	qofcm	636.37	0.02
kiadadag	pojju	558.94	0.07
qoparaya	qofcm	531.92	0.03
pobfoese	poxlp	493.94	0.01
poaorloi	pojju	462.07	0.04
quxmarur	qfjfg	448.01	0.21
qopcomof	qofcm	408.18	0.01
pobgrgrs	pomps	329.90	0.06
poblairo	poxlp	329.06	0.17
pobrease	potmb	314.08	0.09
kiarorom	poxlp	270.25	0.05
faacalea	qfjfg	219.87	0.09
pobcacad	pojju	147.82	0.22
qobsalae	qambm	145.22	0.01
sckwankm	waars	136.05	0.02
poamaxg	polymat	116.87	0.09
qfjbapri	qfila	104.79	0.04
qoprualg	qofpg	79.45	0.01
oraruori	polymat	77.57	0.24
povracoe	pomps	77.30	0.01
quvvalom	qfjfg	76.80	0.21
poatealx	pojju	74.24	0.21
poagumaj	pojju	34.30	0.65
wubcavaa	wuash	27.70	0.05
wuppobam	wuebp	23.90	0.01
povmieci	pojju	23.66	0.06
kixgrazr	potmb	15.12	0.02

qipvigap	qijgl	14.70	0.00
poplopex	pojuu	13.39	0.09
navdesad	nanopeji	13.00	0.12
faaatnaa	faraz	10.60	0.00
poajejec	polymat	10.13	0.00
pobmelat	arinadm	4.77	0.00
mapmemam	qtftp	3.21	0.02
kiaurbao	poxlp	3.05	0.01
dixsasam	pojuu	2.91	0.04
webogare	arinadm	1.94	0.00
quapuoli	qocpn	1.27	0.01
quxlegoa	qfjfg	0.99	0.02
qobfifib	qocpn	0.87	0.35
kiadugat	poxlp	0.31	0.00
poairurm	pojuu	0.18	0.10
faaavzae	qfila	0.16	0.00
pobromam	pomps	0.15	0.01
wapbabam	wadsp	0.04	0.00
qovzaxxr	polymat	0.03	0.00
doxcarei	poxlp	0.02	0.00
anpgaetk	anjbc	0.02	0.00
qfxaldad	qflp	0.00	0.00
mapalmau	qtftp	0.00	0.64
enxkakan	egune	0.00	0.04

Table 2: Calculated time and waiting time in days of the groups.

GROUP	Calculated Days	Waiting Time
qjfg	16655.23	0.87
poahh	7488.59	0.69
kirpp	4718.60	0.22
pomps	4432.51	0.08
polymat	3636.76	0.12
potmb	3245.57	0.10
pojju	3077.31	0.09
qocpn	2896.42	0.04
gbavm	2801.24	0.05
qofcm	2275.95	0.02
poxlp	1096.62	0.04
nanogune	952.80	0.13
qambm	145.22	0.01
waars	136.05	0.02
qfla	104.95	0.04
qofpg	79.45	0.01
wuash	27.70	0.05
wuebp	23.90	0.01
qijgl	14.70	0.00
nanopeji	13.00	0.12
faraz	10.60	0.00
arinadm	6.71	0.00
qtftp	3.21	0.08
wadsp	0.04	0.00
anjbc	0.02	0.00
qflp	0.00	0.00
egune	0.00	0.04

Arina Data Storage Top Users

In the following graph we plot the users having more data in Arina in the last month. If you appear in this graph, we strongly encourage you to reduce your data in Arina.

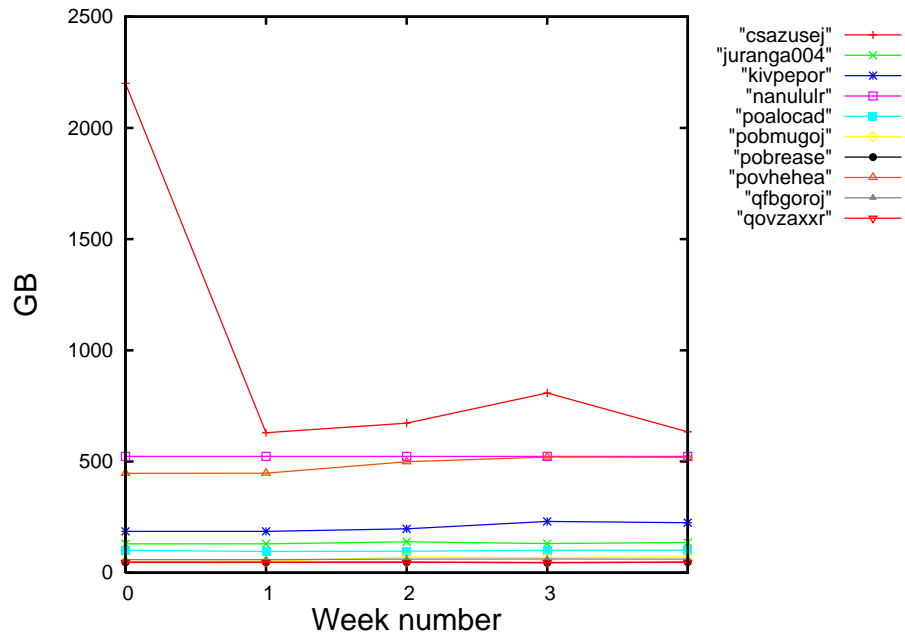


Figure 2: Storage evolution in the last month in GB.