

Estadistics for March/2015

April 1, 2015

Arina

In this brief document we show the usage of arina during March. This month 51031 computing days were used and the the average use of the cluster was 88 %. Since the first of December 193566 computing days were used and the the average use of the Arina cluster was 85 %. The figure shows the usage of Arina along the month. In the first table the usage of each user is shown. The third column indicates all the time each user has used for calculation during this month. The fourth column shows the average time that each job was waiting before the it started running, in days units. In the second table, the same data as in table 1 collected by group is shown.

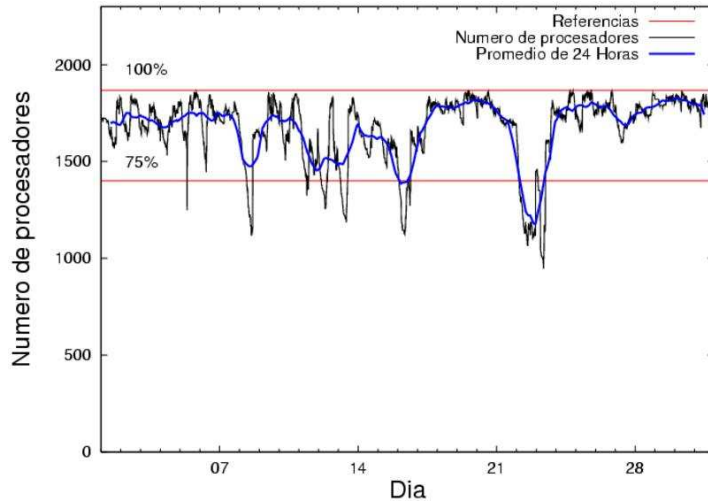


Figure 1: Cluster use. The blue line is a 24 hours average.

Table 1: Calculated time and waiting time in days of the users.

USER	GROUP	Calculated Days	Waiting Time
sckcorsf	nanogune	11556.24	1.89
povhehea	poahh	5622.17	0.50
poamaxg	polymat	5424.02	0.63
juranga004	potmb	5103.80	0.12
pobmabej	potmb	5065.93	0.06
kivpepor	kirpp	3322.78	0.23
nanululr	nanogune	2179.91	0.55
povpisim	pomps	1480.88	0.19
poblauro	poxlp	1258.90	0.02
csazusej	nanogune	768.46	0.13
qfbgoroj	qfjfg	760.33	0.04
pobrease	potmb	746.64	0.03
poalocad	polymat	722.76	0.01
povrucif	polymat	657.27	0.01
qovzaxxr	polymat	562.51	0.18
pobmugoj	pomps	545.90	0.07
kixgrazr	potmb	536.57	0.15
fabusgui	qfjfg	516.32	0.09
naaalcaa	nanopeji	430.18	0.17
qopgobee	qocpn	412.06	0.03
bckmimoj	qfjfg	354.06	0.08
vcposamj	vcnor	346.09	0.14
pobfoese	poxlp	332.04	0.00
kiaolfeb	qocpn	312.39	0.09
pobgrgrs	pomps	310.66	0.03
favcopee	qfjfg	247.71	0.22
qfpmamoh	qfila	234.67	0.01
qoprualg	qofpg	210.95	0.00
pobinini	poxlp	191.97	0.00
qfjbaprij	qfila	181.43	0.00
pobromam	pomps	139.10	0.94
mapalmau	qtftp	114.90	0.31
kibderua	qofcm	95.12	0.00
qfparsaf	qfjfg	66.43	0.02
kiadugat	poxlp	61.92	0.03
bixbrdem	gbdga	53.07	0.00
wubcavaa	wuash	33.86	0.47
ciaazapj	poxlp	22.38	0.00
qopcomof	qofcm	20.49	0.03
sckwankm	waars	10.51	0.04
kiasomal	qocpn	10.04	0.02
pobmelat	arinadm	9.66	0.00
favecvep	qfjfg	6.07	0.00
webogare	arinadm	3.36	0.00
gbpaljod	gbmagg	3.32	0.00
wepgaara	weaga	2.53	0.01
qoparaya	qofcm	2.31	0.00

kixsasal	pojoo	1.87	0.00
mtpmafel	mtgfa	1.14	0.00
bavfepem	pojoo	0.63	0.07
qfbleoni	qfjfg	0.06	0.00
povmieci	pojoo	0.02	0.00
qfxaldad	qflp	0.01	0.00
qfpesmai	qfila	0.00	0.00
mipdebln	geaaa	0.00	0.00
gepalgoi	geaaa	0.00	0.00

Table 2: Calculated time and waiting time in days of the groups.

GROUP	Calculated Days	Waiting Time
nanogune	14504.61	1.67
potmb	11452.94	0.08
polymat	7366.55	0.24
poahh	5622.17	0.50
kirpp	3322.78	0.23
pomps	2476.54	0.11
qfjfg	1951.00	0.06
poxlp	1867.21	0.01
qocpn	734.50	0.06
nanopeji	430.18	0.17
qfila	416.10	0.01
vcnor	346.09	0.14
qofpg	210.95	0.00
qofcm	117.91	0.01
qtftp	114.90	0.31
gbdga	53.07	0.00
wuash	33.86	0.47
arinadm	13.01	0.00
waars	10.51	0.04
gbmgg	3.32	0.00
weaga	2.53	0.01
pojoo	2.52	0.01
mtgfa	1.14	0.00
qflp	0.01	0.00
geaaa	0.00	0.00

Arina Data Storage Top Users

In the following graph we plot the users having more data in Arina in the last month. If you appear in this graph, we strongly encourage you to reduce your data in Arina.

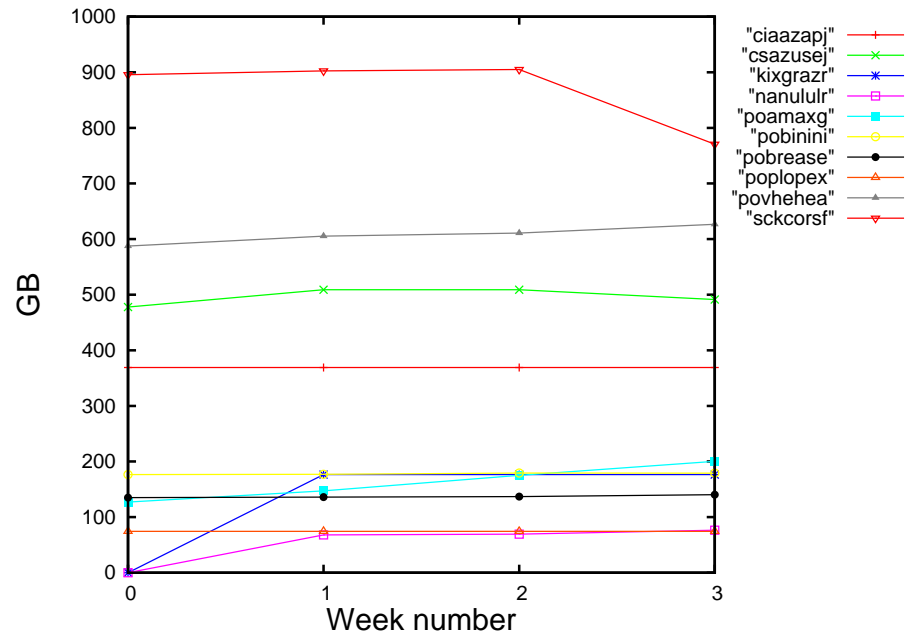


Figure 2: Storage evolution in the last month in GB.

Péndulo

This month 12 computing days were used in **Péndulo** and the the average use of the cluster was 0 %. Since the first of December computing days were used and the the average use of the cluster was %. The figure shows the usage of Péndulo along the month. In the first table the usage of each user is shown. The third column indicates all the time each user has used for calculation during this month. The fourth column shows the average time that each job was waiting before the it started running, in days units. In the second table, the same data as in table 1 collected by group is shown.

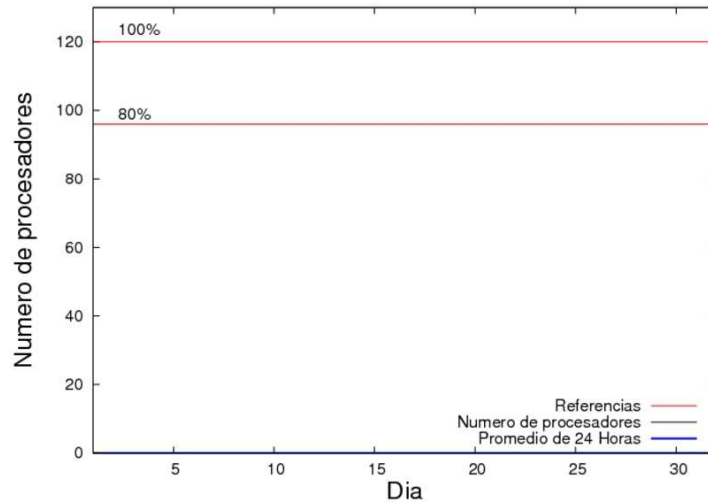


Figure 3: Cluster use. The blue line is a 24 hours average.

Table 3: Calculated time and waiting time in days of the users.

USER	GROUP	Calculated Days	Waiting Time
------	-------	-----------------	--------------

Table 4: Calculated time and waiting time in days of the groups.

GROUP	Calculated Days	Waiting Time
-------	-----------------	--------------