

Estadistics for March/2014

April 1, 2014

Arina

In this brief document we show the usage of arina during March. This month 47929 computing days were used and the the average use of the cluster was 119 %. Since the first of December 149335 computing days were used and the the average use of the Arina cluster was 94 %. The figure shows the usage of Arina along the month. In the first table the usage of each user is shown. The third column indicates all the time each user has used for calculation during this month. The fourth column shows the average time that each job was waiting before the it started running, in days units. In the second table, the same data as in table 1 collected by group is shown.

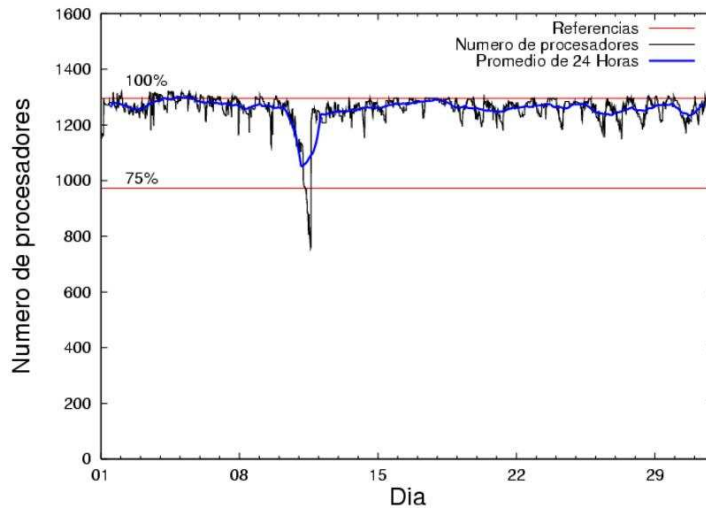


Figure 1: Cluster use. The blue line is a 24 hours average.

Table 1: Calculated time and waiting time in days of the users.

USER	GROUP	Calculated Days	Waiting Time
csazusej	nanogune	17006.95	1.78
povhehea	poahh	4524.81	0.73
povwawaj	pojoo	4191.66	3.60
quaurhei	qfjfg	3527.34	1.81
naxyiyib	nanogune	2474.66	0.26
sepzuola	qorzz	1598.51	0.87
popugurj	pojoo	1536.31	0.89
kibpapaa	qorzz	1364.87	0.90
povrucif	polymat	1256.40	0.28
ciaazapj	poxlp	1250.73	0.40
sckcorsf	nanogune	1024.43	0.07
kibderua	qofcm	770.47	0.14
favcopee	qfjfg	616.04	2.87
pobmugoj	pojoo	589.40	0.52
pobgrgrs	pojoo	531.78	0.18
qobsalae	qambm	523.25	0.78
qopgobee	qocpn	511.35	0.24
poalolog	poxlp	502.97	2.24
poblairo	poxlp	445.22	0.13
sgkluqun	pojoo	404.45	0.07
bcpmeale	qfjfg	371.88	0.36
pobmugoj	pomps	327.52	0.23
juranga004	potmb	288.42	0.17
pobrease	potss	256.06	0.18
pobinini	poxlp	184.73	0.11
qoaarecl	qofcm	178.47	0.06
pobmabej	pojoo	175.61	0.05
naaalcaa	nanopeji	159.10	0.18
mapalmau	qtftp	147.52	1.49
ekpvebaa	ekjgm	114.62	0.01
qoblaago	qorzz	109.23	0.34
pobfoese	poxlp	101.97	0.13
sgkluqun	poxlp	89.74	0.10
qfjbaprj	qfila	79.24	0.27
pobinini	pojoo	75.04	1.49
pobmugoj	poxlp	74.87	0.23
mapmemam	qtftp	71.39	0.51
kixsasal	pojoo	56.79	0.13
wmpabuf	wmjcd	54.62	0.36
pobgrgrs	pomps	49.40	0.04
webogare	arinadm	48.70	0.02
favecvep	qfjfg	34.25	0.15
quxlegoa	qfjfg	29.81	0.48
inpesalg	injbi	29.44	0.02
qoprualg	qofpg	29.05	0.04
quaduree	qfila	26.49	0.05
sckwankm	waars	23.53	0.14

pobcad	pojuu	16.00	0.00
qopcomof	qofcm	14.78	0.01
qobmimuj	lgsgi	14.43	0.11
mtpmafel	mtgfa	14.36	0.37
povpisim	pomps	9.65	0.00
meppesag	qtftp	8.02	0.11
qfbleoni	qfjfg	8.01	0.03
qfbgoroj	qfjfg	3.13	0.03
qfxaldad	qflp	0.87	0.01
qfpesmai	qfila	0.30	0.10
qfbloala	qfala	0.19	0.00
wuppobam	wuebp	0.12	0.00
pobmelat	arinadm	0.08	0.00
poplopex	pojuu	0.00	0.31
nanululr	nanogune	0.00	0.12
gbpaljod	gbmgg	0.00	0.05

Table 2: Calculated time and waiting time in days of the groups.

GROUP	Calculated Days	Waiting Time
nanogune	20506.05	1.30
pojju	7577.05	0.52
qfjfg	4590.44	0.89
poahh	4524.81	0.73
qorzz	3072.62	0.79
poxlp	2650.23	0.35
polymat	1256.40	0.28
qofcm	963.72	0.12
qambm	523.25	0.78
qocpn	511.35	0.24
pomps	386.56	0.20
potmb	288.42	0.17
potss	256.06	0.18
qtftp	226.93	1.16
nanopeji	159.10	0.18
ekjgm	114.62	0.01
qfila	106.03	0.10
wmjcd	54.62	0.36
arinadm	48.78	0.01
injbi	29.44	0.02
qofpg	29.05	0.04
waars	23.53	0.14
lgsgi	14.43	0.11
mtgfa	14.36	0.37
qflp	0.87	0.01
qfala	0.19	0.00
wuebp	0.12	0.00
gbmgi	0.00	0.05

Arina Data Storage Top Users

In the following graph we plot the users having more data in Arina in the last month. If you appear in this graph, we strongly encourage you to reduce your data in Arina.

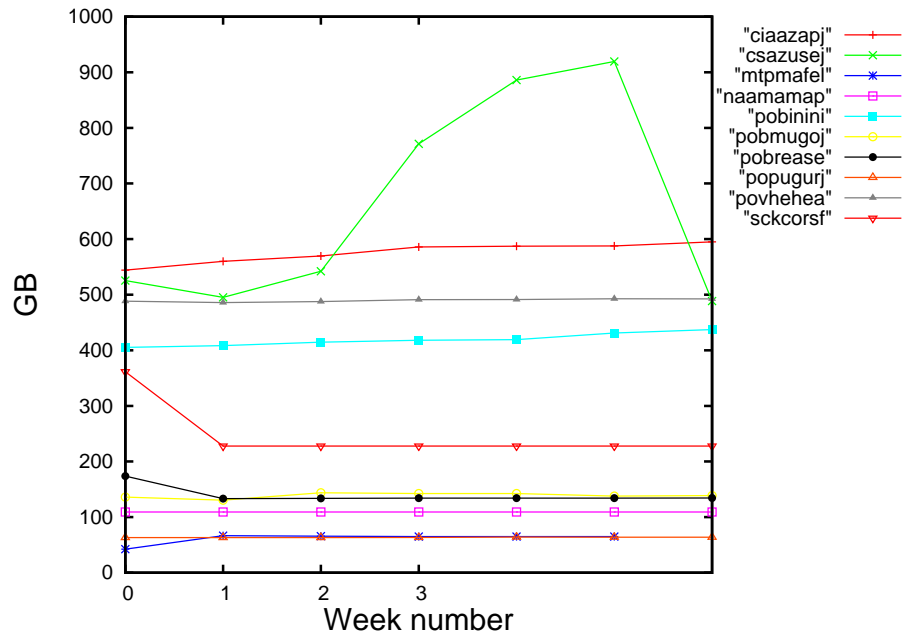


Figure 2: Storage evolution in the last month in GB.

Péndulo

This month 780 computing days were used in **Péndulo** and the the average use of the cluster was 36 %. Since the first of December 1941 computing days were used and the the average use of the cluster was 19 %. The figure shows the usage of Péndulo along the month. In the first table the usage of each user is shown. The third column indicates all the time each user has used for calculation during this month. The fourth column shows the average time that each job was waiting before the it started running, in days units. In the second table, the same data as in table 1 collected by group is shown.

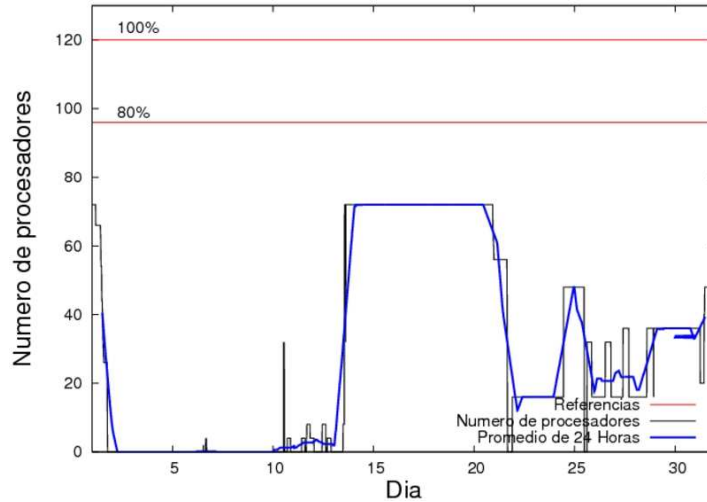


Figure 3: Cluster use. The blue line is a 24 hours average.

Table 3: Calculated time and waiting time in days of the users.

USER	GROUP	Calculated Days	Waiting Time
qovzaxxr	qofcm	668.09	2.14
popugurj	pojju	111.45	0.00
pobmelat	arinadm	0.74	0.00
webogare	arinadm	0.10	0.00

Table 4: Calculated time and waiting time in days of the groups.

GROUP	Calculated Days	Waiting Time
qofcm	668.09	2.14
pojju	111.45	0.00
arinadm	0.84	0.00