

# Estadistics for March/2013

April 22, 2013

## Arina

In this brief document we show the usage of arina during March. This month 24799 computing days where used and the the average use of the cluster was 59 %. Since the first of December 130444 computing days where used and the the average use of the Arina cluster was 79 %. The figure shows the usage of Arina along the month. In the first table the usage of each user is shown. The third column indicates all the time each user has used for calculation during this month. The fourth column shows the average time that each job was waiting before the it started running, in days units. In the second table, the same data as in table 1 collected by group is shown.

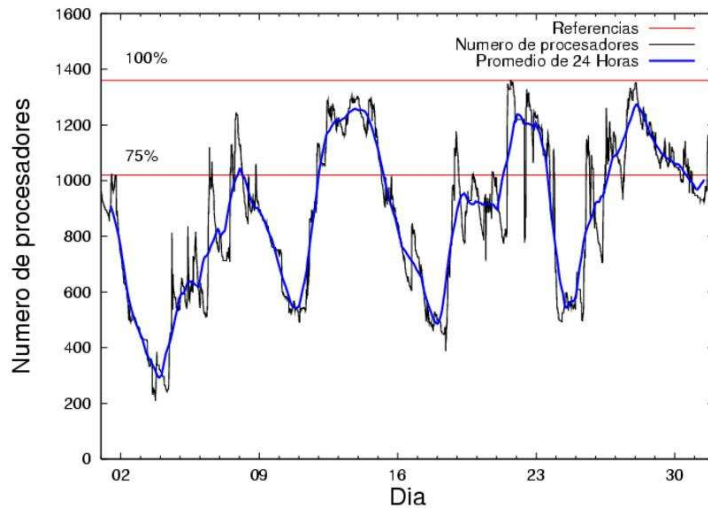


Figure 1: Cluster use. The blue line is a 24 hours average.

Table 1: Calculated time and waiting time in days of the users.

USER	GROUP	Calculated Days	Waiting Time
sckcorsf	nanogune	4450.72	0.12
povhehea	poahh	3161.89	0.34
bckmimoj	qfjfg	2134.51	0.04
pmarkaide001	ggmer	2114.83	0.67
kibderua	qofcm	1755.30	0.00
ciaazapj	poxlp	1506.41	0.00
etpdihei	etjfm	1182.98	0.25
povrucif	poxlp	970.91	0.01
favecvcp	qfjfg	763.27	0.01
quxbabai	qfjfg	759.26	0.01
pobrease	potss	675.11	0.03
quxlegoa	qfjfg	654.48	0.34
pobrease	pojuu	650.85	0.01
popugurj	pojuu	574.48	0.00
qoparaya	qofcm	501.79	0.00
qovzaxxr	qorz	447.35	0.00
pobmugoj	pojuu	340.00	0.01
qopgobee	qocpn	319.26	0.00
waxpoxxy	waars	244.35	0.00
qoaarecl	qofcm	193.96	0.01
kixsasal	pojuu	189.35	0.05
pobinini	pojuu	188.79	0.00
iapgarue	iaegr	169.53	0.07
bixcobum	gbdga	167.69	0.02
mapmemam	qtftp	82.51	0.02
pobmelat	arinadm	80.60	0.00
qfploarf	qfila	69.16	0.01
mapalmau	qtftp	65.83	0.01
juranga004	potmb	65.39	0.00
webogare	arinadm	47.66	0.00
cixesesb	poxlp	43.63	0.15
favcopee	qfjfg	43.29	0.00
bcpremae	bcdbu	39.82	0.00
scpzuola	qorz	38.15	0.06
pobgrgrs	pojuu	34.55	0.01
acblonou	ccjla	21.05	1.43
poplopex	pojuu	18.83	0.00
qfpmamoh	qfila	12.90	0.04
sgkluqun	pojuu	10.42	0.02
qoprualg	qofpg	2.57	0.00
wabpepaa	waars	1.65	0.01
kibmeheg	pojuu	1.21	0.00
weaasetm	weaga	0.88	0.01
oipbibij	bull	0.58	0.03
qfxaldad	qflp	0.43	0.00
inpesalg	injbi	0.24	0.00
bavfepem	pojuu	0.24	0.01

pobmabej	pojuu	0.12	0.00
qfpesmai	qfila	0.06	0.03

Table 2: Calculated time and waiting time in days of the groups.

GROUP	Calculated Days	Waiting Time
nanogune	4450.72	0.12
qfjfg	4354.80	0.03
poahh	3161.89	0.34
poxlp	2520.95	0.01
qofcm	2451.05	0.00
ggmer	2114.83	0.67
pojuu	2008.84	0.01
etjfm	1182.98	0.25
potss	675.11	0.03
qorz	485.49	0.02
qocpn	319.26	0.00
waars	246.01	0.01
iaegr	169.53	0.07
gbdga	167.69	0.02
qtftp	148.34	0.02
arinadm	128.26	0.00
qfila	82.12	0.02
potmb	65.39	0.00
bcdbu	39.82	0.00
ccjla	21.05	1.43
qofpg	2.57	0.00
weaga	0.88	0.01
bull	0.58	0.03
qflp	0.43	0.00
injbi	0.24	0.00

## Arina Data Storage Top Users

In the following graph we plot the users having more data in Arina in the last month. If you appear in this graph, we strongly encourage you to reduce your data in Arina.

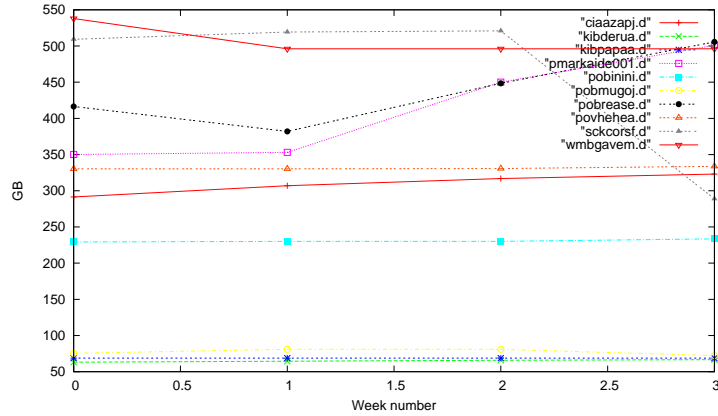


Figure 2: Storage evolution in the last month (in GB).

## Péndulo

This month 222 computing days were used in **Péndulo** and the the average use of the cluster was 10 %. Since the first of December 1331 computing days were used and the the average use of the cluster was 13 %. The figure shows the usage of Péndulo along the month. In the first table the usage of each user is shown. The third column indicates all the time each user has used for calculation during this month. The fourth column shows the average time that each job was waiting before the it started running, in days units. In the second table, the same data as in table 1 collected by group is shown.

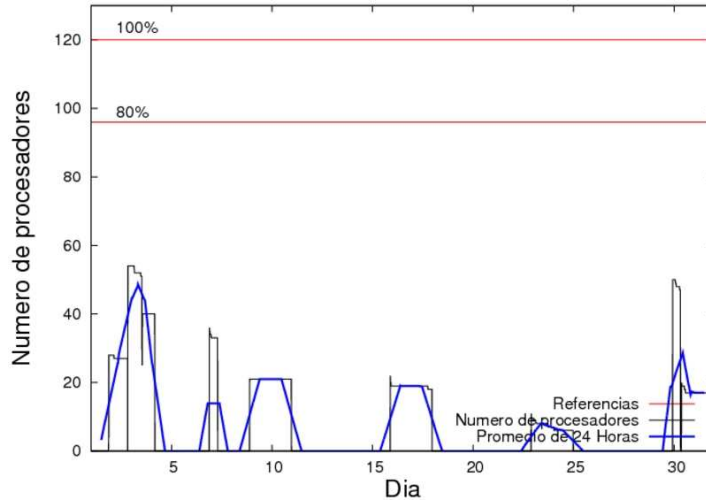


Figure 3: Cluster use. The blue line is a 24 hours average.

Table 3: Calculated time and waiting time in days of the users.

USER	GROUP	Calculated Days	Waiting Time
mtpmafel	mtgfa	221.62	0.37

Table 4: Calculated time and waiting time in days of the groups.

GROUP	Calculated Days	Waiting Time
mtgfa	221.62	0.37

## Ikerbasque machine

The service has access to 208 xeon cores in this machine, which are older than Arina's ones. The codes of only few big users are maintained there to optimize the maintenance time. This month 3147 computing days were used in **Ikerbasque** machine and the the average use of the cluster was 49 %. Since the first of December 22147 computing days were used and the the average use of the cluster was 87 %. In the first table the usage of each user is shown. The third column indicates all the time each user has used for calculation during this month. The fourth column shows the average time that each job was waiting before the it started running, in days units. In the second table, the same data as in table 1 collected by group is shown.

Table 5: Calculated time and waiting time in days of the users.

USER	GROUP	Calculated Days	Waiting Time
scpzuola	qorzz	1515.7	0.00
pobmugoj	pojju	1517.5	0.00
pobmelat	arinadm	113.7	0.00

Table 6: Calculated time and waiting time in days of the groups.

GROUP	Calculated Days	Waiting Time
qorzz	1515.7	0.00
pojju	1517.5	0.00
arinadm	113.7	0.0