

Estadistics for March/2012

April 18, 2012

Arina

In this brief document we show the usage of arina during March. This month 33847 computing days where used and the the average use of the cluster was 78 %. Since the first of December 114598 computing days where used and the the average use of the cluster was 68 %. The figure shows the usage of Arina along the month. In the first table the usage of each user is shown. The third column indicates all the time each user has used for calculation during this month. The fourth column shows the average time that each job was waiting before the it started running, in days units. In the second table, the same data as in table 1 collected by group is shown.

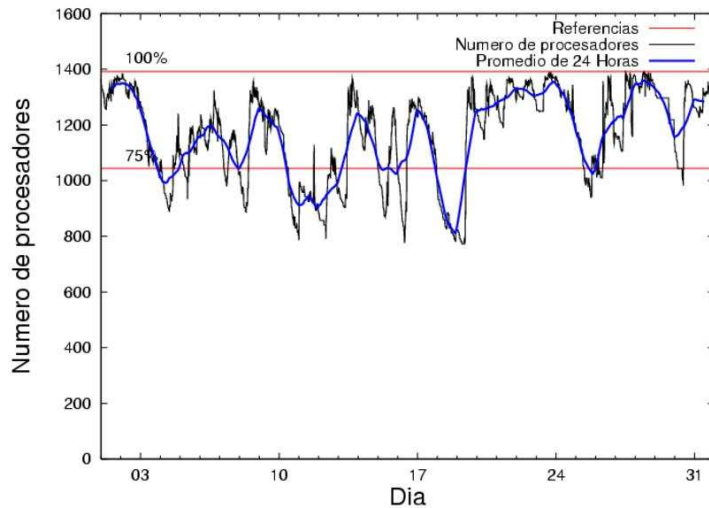


Figure 1: Cluster use. The blue line is a 24 hours average.

Table 1: Calculated time and waiting time in days of the users.

USER	GROUP	Calculated Days	Waiting Time
kibpapaa	qorz	4489.74	0.44
favcopee	qjfg	3202.60	0.22
povhehea	poahh	3170.60	0.00
qbleoni	qjfg	3113.99	0.43
wmbgavem	waets	1897.31	0.13
qoaarecl	qofcm	1829.97	0.12
scpuola	qorz	1786.56	0.29
kibmeheg	pojoo	1636.93	0.08
bbpbabia	bbabb	1533.99	0.03
pobrease	pojoo	1431.24	0.26
cixesesb	poxlp	1165.01	0.32
qopgobee	qocpn	961.91	0.06
qovzaxxr	qorz	838.66	0.09
pobrease	potss	744.04	0.41
ggpmoasi	ggmer	670.60	3.71
povwawaj	pojoo	489.48	0.13
pobmabej	pojoo	447.57	0.08
pobmugoj	pojoo	427.90	0.01
ciaazapj	poxlp	425.36	0.03
qoparaya	qofcm	407.04	0.06
nabzezem	nanogune	376.72	0.11
quxlegoa	qjfg	254.88	0.25
povrucif	poxlp	233.42	0.03
mapmemam	qtftp	233.39	0.11
pobgrgrs	pojoo	233.06	0.04
favecvcp	qjfg	206.28	0.11
popugurj	pojoo	195.13	0.01
qobconde	qofcm	147.72	0.01
qfpmamoh	qfila	141.56	0.03
poalolog	poxlp	140.25	0.07
wabeslel	waars	119.26	0.00
kibderua	qofcm	103.01	0.03
qfploarf	qfila	98.72	0.00
bcpremae	bcdbu	96.62	0.00
pobmelat	arinadm	93.82	0.01
sckcorsf	nanogune	82.90	0.13
pobinini	pojoo	82.62	0.01
bcpitaia	bcizb	56.44	0.01
kixmagre	poxlp	45.04	0.10
poplopex	pojoo	42.73	0.01
qopcomof	qofcm	39.95	0.04
bcpfima	mimam	31.43	0.01
waxpoxxy	waars	22.71	0.27
quxbabai	qjfg	21.25	0.00
webogare	arinadm	13.76	0.00
iapgarue	iaegr	13.51	0.00
kixsasal	pojoo	10.80	0.10

qfpesmai	qfila	8.32	0.00
meppesag	qtftp	8.01	0.08
wmpetali	wdaga	6.78	0.26
ccpsoeta	jieab	4.12	0.00
wapgoesj	wakgg	3.40	0.03
ggpzamai	ggmer	2.85	0.00
qobmimuj	lgsgi	2.81	0.00
wabpepaa	waars	2.64	0.04
qfpbaprij	qfila	2.44	0.00
bckmimoj	qfjfg	1.20	0.02
poblaire	poxlp	0.85	0.00
mapalmai	magps	0.54	0.01
wapesnuv	wakgg	0.06	0.00
bcklogoi	inffi	0.05	0.00
qfptogaa	qflp	0.00	0.01
qfplapel	qflp	0.00	0.10

Table 2: Calculated time and waiting time in days of the groups.

GROUP	Calculated Days	Waiting Time
qorzz	7114.96	0.31
qjfg	6800.20	0.19
pojuu	4997.47	0.06
poahh	3170.60	0.00
qofcm	2527.69	0.07
poxlp	2009.95	0.04
waets	1897.31	0.13
bbabb	1533.99	0.03
qocpn	961.91	0.06
potss	744.04	0.41
ggmer	673.45	3.65
nanogune	459.62	0.11
qfila	251.04	0.01
qtftp	241.40	0.11
waars	144.61	0.04
arinadm	107.58	0.01
bcdbu	96.62	0.00
bcizb	56.44	0.01
mimam	31.43	0.01
iaegr	13.51	0.00
wdaga	6.78	0.26
jieab	4.12	0.00
wakgg	3.46	0.02
lgsgi	2.81	0.00
magps	0.54	0.01
infi	0.05	0.00
qflp	0.00	0.07

Pendolo

This month 117 computing days were used in **Pendolo** and the the average use of the cluster was 5 %. Since the first of December 305 computing days were used and the the average use of the cluster was 3 %. The figure shows the usage of Pendolo along the month. In the first table the usage of each user is shown. The third column indicates all the time each user has used for calculation during this month. The fourth column shows the average time that each job was waiting before the it started running, in days units. In the second table, the same data as in table 1 collected by group is shown.

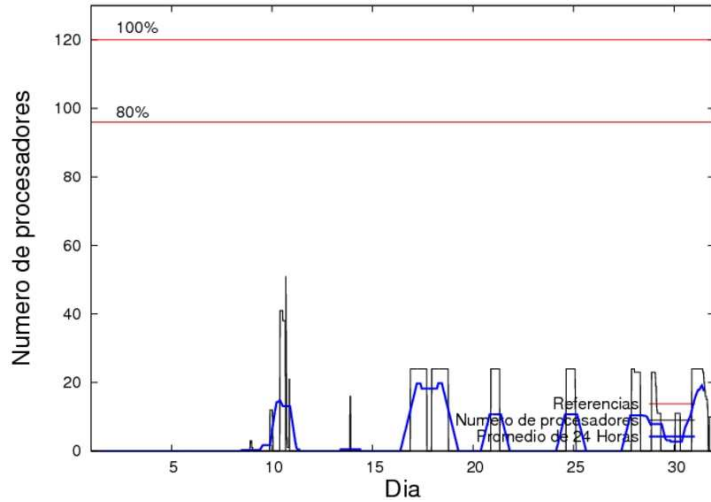


Figure 2: Cluster use. The blue line is a 24 hours average.

Table 3: Calculated time and waiting time in days of the users.

USER	GROUP	Calculated Days	Waiting Time
jtppragg	jtjob	100.72	0.32
pobmelat	arinadm	16.43	0.03

Table 4: Calculated time and waiting time in days of the groups.

GROUP	Calculated Days	Waiting Time
jtjob	100.72	0.32
arinadm	16.43	0.03

Ikerbasque machine

The service has access to 208 xeon cores in this machine, which are older than Arina's ones. The codes of only few big users are maintained there to optimize the maintenance time. This month 5111 computing days were used in **Ikerbasque** machine and the the average use of the cluster was 79 %. Since the first of December 10833 computing days were used and the the average use of the cluster was 42 %. In the first table the usage of each user is shown. The third column indicates all the time each user has used for calculation during this month. The fourth column shows the average time that each job was waiting before the it started running, in days units. In the second table, the same data as in table 1 collected by group is shown.

Table 5: Calculated time and waiting time in days of the users.

USER	GROUP	Calculated Days	Waiting Time
kibpapaa	qorzz	2038.78	1.66
scpzuola	qorzz	1124.06	0.96
pobmelat	arinadm	1099.88	0.36
qovzaxxr	qorzz	848.09	0.31
pobrease	potss	0.01	3.94

Table 6: Calculated time and waiting time in days of the groups.

GROUP	Calculated Days	Waiting Time
qorzz	4010.94	1.28
arinadm	1099.88	0.36
potss	0.01	3.94