

Estadistics for March/2011

April 1, 2011

Arina

In this brief document we show the usage of arina during March. This month 19356 computing days were used and the average use of the cluster was 83 %. Since the first of June 70696 computing days were used and the average use of the cluster was 78 %. The figure shows the usage of Arina along the month. In the first table the usage of each user is shown. The third column indicates all the time each user has used for calculation during this month. The fourth column shows the average time that each job was waiting before the it started running, in days units. In the second table, the same data as in table 1 collected by group is shown.

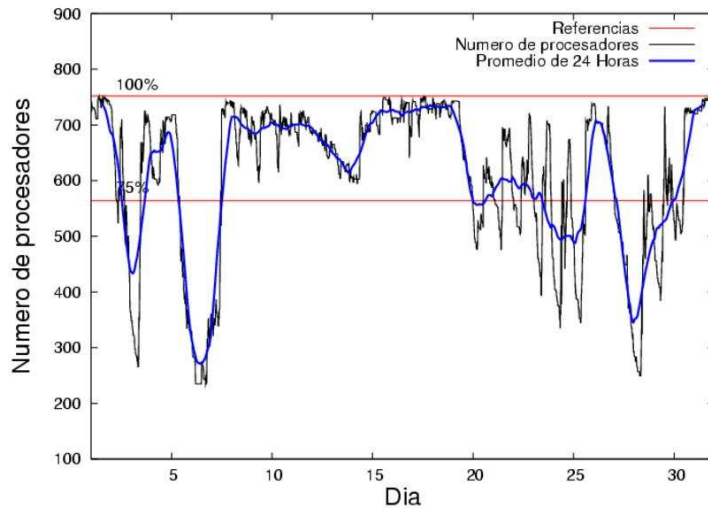


Figure 1: Cluster use. The blue line is a 24 hours average.

Table 1: Calculated time and waiting time in days of the users.

USER	GROUP	Calculated Days	Waiting Time
povhehea	poahh	5442.74	0.10
scpzuola	qorzz	1752.58	0.98
kibderua	qofcm	1279.12	0.11
qfbleoni	qffca	1152.61	0.15
pobmugoj	pojjuu	1133.44	0.05
favcopee	qfjfg	1092.91	0.44
pobrease	pojjuu	986.82	0.18
pobrease	potss	944.26	0.21
qopgobee	qocpn	773.00	0.04
wmbgavem	waets	660.68	0.11
waptctce	waets	628.38	0.07
qoaarecl	qofcm	610.62	0.08
favecvep	qfjfg	529.01	0.12
pobgrgrs	pojjuu	420.87	0.05
povwawaj	pojjuu	305.32	0.15
ciaazapj	poxlp	257.20	0.03
povrucif	poxlp	248.07	0.02
bcpdiaro	zoicu	244.62	0.09
poblairo	poxlp	231.15	0.10
poalolog	poxlp	131.85	0.13
bckmimoj	qfjfg	126.32	0.00
wabgalaj	waars	97.44	0.03
kivremey	qpjag	74.17	0.18
wabeslel	waars	39.69	0.02
ggpsamam	ggmer	39.69	0.01
bpcacaa	mimam	37.61	0.02
upetralanda001	wdaga	30.32	0.07
qfbagcae	qffca	22.58	0.00
qfpbaprj	qfila	16.28	0.01
quxlegoa	qfjfg	14.58	0.06
pobmelat	arinadm	9.43	0.00
wuppobam	wuebp	3.59	0.00
qobmimuj	lgsgi	3.25	0.02
ccbsaalr	ccjla	3.19	0.04
quxbabai	qfjfg	2.13	0.00
webogare	arinadm	1.78	0.00
poplopex	pojjuu	1.64	0.00
qopcomof	qofcm	1.57	0.01
waxpoxxy	waars	1.54	0.00
iqpgarue	iqegr	1.44	0.00
bcpremae	bcdbu	1.42	0.02
qovzaxxr	qorzz	0.38	0.02
sgpfemae	gpucomp	0.33	0.00
webpegoo	wenzu	0.21	0.08
pobinini	pojjuu	0.17	0.00
inpesalg	injbi	0.03	0.00

pobmabej	pojju	0.01	0.00
----------	-------	------	------

Table 2: Calculated time and waiting time in days of the groups.

GROUP	Calculated Days	Waiting Time
poahh	5442.74	0.10
pojju	2848.25	0.09
qofcm	1891.31	0.10
qfjfg	1764.95	0.26
qorzz	1752.96	0.98
waets	1289.06	0.09
qffca	1175.19	0.15
potss	944.26	0.21
poxlp	868.28	0.06
qocpn	773.00	0.04
zoicu	244.62	0.09
waars	138.68	0.02
qpjag	74.17	0.18
ggmer	39.69	0.01
mimam	37.61	0.02
wdaga	30.32	0.07
qfila	16.28	0.01
arinadm	11.22	0.00
wuebp	3.59	0.00
lgsgi	3.25	0.02
ccjla	3.19	0.04
iqegr	1.44	0.00
bcdbu	1.42	0.02
gpucomp	0.33	0.00
wenzu	0.21	0.08
injbi	0.03	0.00

Pendolo

This month 905 computing days were used in **Pendolo** and the the average use of the cluster was 41 %. Since the first of December 1202 computing days were used and the the average use of the cluster was 12 %. The figure shows the usage of Pendolo along the month. In the first table the usage of each user is shown. The third column indicates all the time each user has used for calculation during this month. The fourth column shows the average time that each job was waiting before the it started running, in days units. In the second table, the same data as in table 1 collected by group is shown.

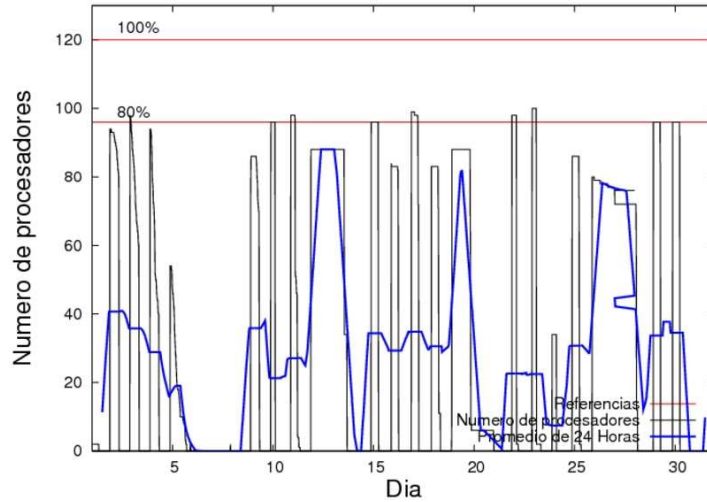


Figure 2: Cluster use. The blue line is a 24 hours average.

Table 3: Calculated time and waiting time in days of the users.

USER	GROUP	Calculated Days	Waiting Time
qovzaxxr	qofcm	639.97	1.77
jtppragg	jtjob	222.80	0.44
mtpmafel	mtgfa	22.35	4.06
bcpdiaro	zoicu	10.51	0.18
jtpeiizi	jtjob	9.63	0.05

Table 4: Calculated time and waiting time in days of the groups.

GROUP	Calculated Days	Waiting Time
qofcm	639.97	1.77
jtjob	232.42	0.43
mtgfa	22.35	4.06
zoicu	10.51	0.18