

Estadistics for February/2019

March 1, 2019

Arina

In this brief document we show the usage of arina during February. This month 87559 computing days were used and the average use of the cluster was 84 %. Since the first of December 284556 computing days were used and the average use of the Arina cluster was 85 %. The figure shows the usage of Arina along the month. In the first table the usage of each user is shown. The third column indicates all the time each user has used for calculation during this month. The fourth column shows the average time that each job was waiting before the it started running, in days units. In the second table, the same data as in table 1 collected by group is shown.

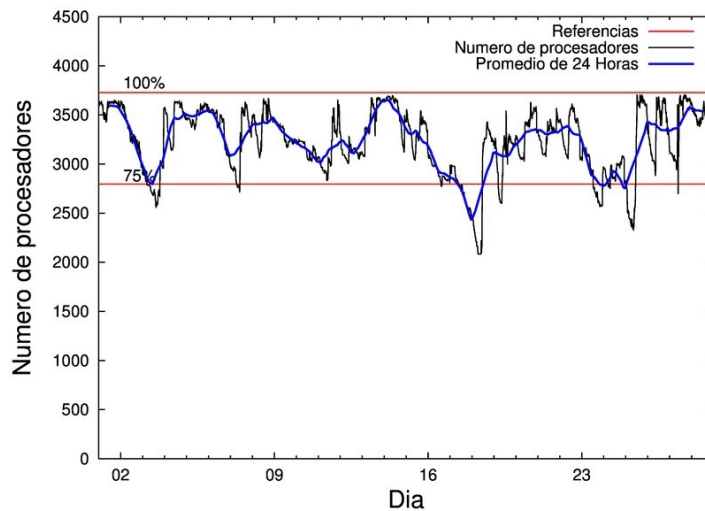


Figure 1: Cluster use. The blue line is a 24 hours average.

Table 1: Calculated time and waiting time in days of the users.

USER	GROUP	Calculated Days	Waiting Time
qovzaxxr	polymat	17094.56	0.43
povhehea	poahh	8540.45	0.31
povwawaj	pojoo	7616.73	0.17
quxtaxxs	polymat	6296.44	0.44
povrucif	polymat	4968.16	0.16
poagafrm	pojoo	4757.37	0.65
poaugbia	pojoo	3642.60	0.05
povpisim	pomps	3210.34	0.08
enxcacaj	egune	3106.80	0.62
pobladej	poxlp	2922.19	0.13
poarloi	pojoo	2303.22	0.09
fabusgui	qfjfg	2209.78	0.09
bcpliolj	bgjbp	1624.18	0.24
popporiv	poxlp	1531.70	0.25
sckahnom	potmb	1113.82	0.07
poairurm	polymat	1017.87	0.09
enxararo	egune	1013.49	0.43
quaduree	qfila	983.97	0.03
pobmabej	potmb	971.47	0.06
enbzhzh	egune	877.33	0.10
pobgrgrs	pomps	866.54	0.00
faacalea	qfjfg	747.44	0.04
enblairo	egune	688.96	0.09
poanacuj	polymat	631.64	0.07
quainbea	qfjfg	600.43	0.13
pobrease	potmb	566.61	0.02
poajejec	polymat	530.11	0.07
kibderua	qofcm	517.74	0.00
ciaolarb	pojoo	496.54	0.00
pobmugoj	pomps	478.34	0.04
kiasomal	qocpn	474.19	0.03
bixbrdem	gbdga	442.27	0.03
dixsasam	pojoo	438.72	0.00
csazusej	nanogune	424.50	0.45
qfpesmai	qfila	385.22	0.00
qopgobee	qocpn	374.08	0.01
poplopex	pojoo	339.96	0.01
quxmarur	qfjfg	280.80	1.02
qobcacea	qocpn	262.06	0.01
povmieci	pojoo	193.25	0.01
kixgrazr	potmb	174.09	0.11
ciaalece	pojoo	150.24	0.03
enbxilij	egune	149.12	0.16
pobfoese	poxlp	134.75	0.16
ciaansap	pojoo	134.55	0.07
popugurj	pojoo	118.99	1.90
qfpbaprr	qfila	112.93	0.00

quaqugaj	qfila	104.51	0.00
quamearx	qfila	97.44	0.00
qobpamap	qocpn	93.81	0.03
qobsalae	qambm	88.76	0.01
nabkoxxn	nanogune	80.02	0.01
doxcarei	poemg	78.86	0.05
kibderua	qoabl	78.19	0.00
qobzazag	qocpn	77.95	0.00
qoprualg	qofpg	45.90	0.00
kixsasal	pojju	43.06	0.01
qoapefuh	qocpn	41.27	0.01
pobluluv	poxlp	34.40	0.03
qfbolsaa	qfila	31.58	0.00
bckmimoj	qfjfg	25.65	0.01
poaurura	poxlp	21.96	0.02
pobcacad	pojju	21.29	0.00
quxlegoa	qfjfg	17.55	0.07
favcopee	qfjfg	16.31	0.01
qopcomof	qofcm	12.54	0.00
qoparaya	qofcm	6.12	0.00
poatealx	pojju	4.35	0.00
bcpremae	bcdbu	3.87	0.00
quarulob	qfjfg	3.07	0.00
bgbalurm	bgjbp	2.46	0.00
quavagas	qfjfg	2.43	0.00
povracoe	pomps	2.06	0.00
wegopej	wejcm	2.02	0.00
inagaaro	oijgc	1.77	0.00
qubcaxxc	qfjfg	1.45	0.00
scavinam	poemg	0.63	0.03
kiaurbao	poxlp	0.61	0.09
bgpmuhoi	bcnsc	0.54	0.00
faaatnaa	faraz	0.31	0.03
pobtxe01	poxlp	0.17	0.00
naplodud	nanogune	0.08	0.02
ciazuulm	pojju	0.05	0.00
oipgacaj	oijgc	0.03	0.00
anpbicaj	anjbc	0.02	0.00
kiadadag	pojju	0.01	0.05
dibxuxux	poxlp	0.01	0.06
webogare	arinadm	0.00	0.00
pobxlp01	poxlp	0.00	0.00

Table 2: Calculated time and waiting time in days of the groups.

GROUP	Calculated Days	Waiting Time
polymat	30538.77	0.25
pojoo	20260.92	0.11
poahh	8540.45	0.31
egune	5835.69	0.33
poxlp	4645.79	0.11
pomps	4557.27	0.04
qfjfg	3904.90	0.11
potmb	2826.00	0.06
qfila	1715.65	0.00
bgjbp	1626.63	0.13
qocpn	1323.35	0.02
qofcm	536.40	0.00
nanogune	504.60	0.42
gbdga	442.27	0.03
qambm	88.76	0.01
poemg	79.49	0.04
qoabl	78.19	0.00
qofpg	45.90	0.00
bcdbu	3.87	0.00
wejcm	2.02	0.00
oijgc	1.80	0.00
bcnsc	0.54	0.00
faraz	0.31	0.03
anjbc	0.02	0.00
arinadm	0.00	0.00

Arina Data Storage Top Users

In the following graph we plot the users having more data in Arina in the last month. If you appear in this graph, we strongly encourage you to reduce your data in Arina.

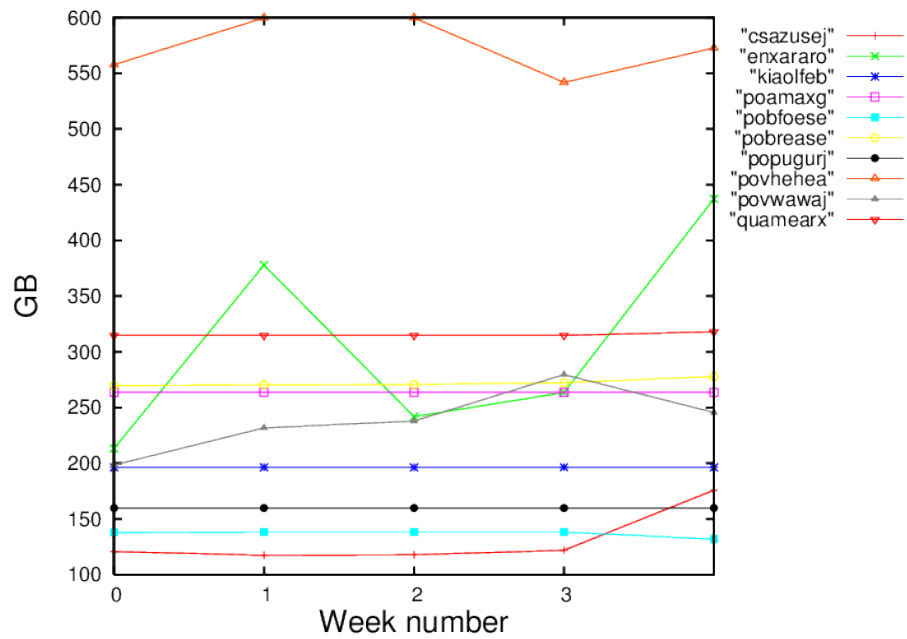


Figure 2: Storage evolution in the last month in GB.