

Estadistics for February/2018

March 1, 2018

Arina

In this brief document we show the usage of arina during February. This month 84695 computing days where used and the the average use of the cluster was 81 %. Since the first of December 227329 computing days where used and the the average use of the Arina cluster was 68 %. The figure shows the usage of Arina along the month. In the first table the usage of each user is shown. The third column indicates all the time each user has used for calculation during this month. The fourth column shows the average time that each job was waiting before the it started running, in days units. In the second table, the same data as in table 1 collected by group is shown.

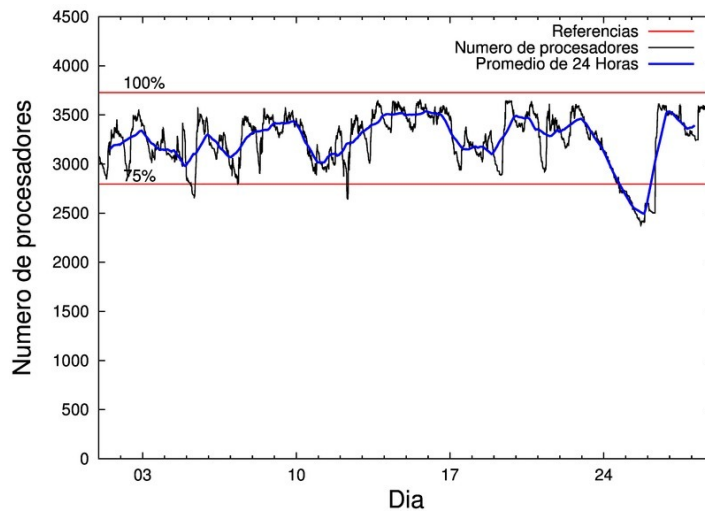


Figure 1: Cluster use. The blue line is a 24 hours average.

Table 1: Calculated time and waiting time in days of the users.

USER	GROUP	Calculated Days	Waiting Time
govzaxxr	polymat	12637.91	0.23
scavinam	poemg	8295.07	0.01
povpisim	pomps	7997.30	0.07
enblairo	egune	7752.55	0.24
poamaxg	polymat	6621.05	0.14
povhehea	poahh	5775.78	0.52
povrucif	polymat	3494.72	0.16
pobmugoj	pomps	3184.34	0.08
poairurm	polymat	2878.81	0.01
kiadadag	pojuu	2456.72	0.12
poajejec	polymat	2043.54	0.04
fabusgui	qfjfg	1956.39	0.14
qopgobee	qocpn	1900.13	0.01
enxararo	egune	1867.57	0.31
pobgrgrs	pomps	1843.13	0.01
poaugbia	pojuu	1558.02	0.32
pobladej	poxlp	1553.13	0.00
dixsasam	pojuu	1426.05	0.06
quarafam	qfjfg	1153.41	0.05
povwawaj	pojuu	991.29	0.39
enbxilij	egune	783.15	0.29
quamearx	qfila	473.05	0.00
kiasomal	qocpn	469.58	0.01
qfjbaprrj	qfila	404.66	0.01
poafesaa	pojuu	372.86	0.00
doxcarei	poemg	368.68	0.16
poarloi	pojuu	288.47	0.00
juranga004	potmb	286.62	0.00
poadoodj	potmb	281.22	0.05
quaurhei	qfjfg	267.88	0.20
enbzhzh	egune	253.69	0.16
pobmabej	potmb	253.08	0.01
kibderua	qofcm	251.16	0.34
poalocad	polymat	209.32	0.10
qopcomof	qofcm	191.41	0.00
qoprualg	qofpg	184.75	0.00
qobpamap	qocpn	181.39	0.01
kiaurbao	poxlp	181.19	0.00
bgpmafea	bgjal	152.00	0.05
bixbrdem	gbdga	139.53	0.01
pobsisis	pomps	122.84	0.00
poarugua	pojuu	121.56	0.01
qobzazag	qocpn	102.31	0.01
qfbleoni	qfjfg	88.99	0.07
quxmarur	qfjfg	86.40	0.00
faaatnaa	faraz	79.91	0.00
fablozoj	qfila	75.90	0.01

enxcacaj	egune	75.64	0.01
pspashen	psnah	75.07	0.03
popugurj	pojju	70.96	0.01
iaretxabalet002	bgjal	61.05	0.00
qfbloala	qfjfg	49.32	0.01
pobfoese	poxlp	48.75	0.12
naaruore	nanogune	47.94	2.20
favecvep	qfjfg	38.72	0.06
wapgoesj	wakgg	34.87	0.00
webogare	arinadm	23.71	0.02
faacalea	qfjfg	18.65	0.03
qobsogax	jiads	17.25	0.01
poaszze	poxlp	15.70	0.00
poainugn	pojju	12.98	0.00
qfpmamoh	qfila	12.76	0.00
wavototm	waaap	10.98	0.01
kiateanm	qocpn	8.69	0.01
poasibrd	poxlp	4.70	0.00
pobrease	potmb	3.12	0.01
qoparaya	qofcm	2.37	0.03
poatealx	pojju	2.20	0.00
pobmelat	arinadm	0.72	0.00
quaqugaj	qfila	0.66	0.00
povracoe	pomps	0.47	0.00
anpbicaj	anjbc	0.14	0.00
ciazuulm	pojju	0.05	0.01
quxtaxxs	polymat	0.00	0.00
qobconde	qofcm	0.00	0.00
kixgrazr	potmb	0.00	0.00
kiaolfeb	potss	0.00	0.00

Table 2: Calculated time and waiting time in days of the groups.

GROUP	Calculated Days	Waiting Time
polymat	27885.35	0.10
pomps	13148.08	0.05
egune	10732.61	0.25
poemg	8663.75	0.02
pojoo	7301.17	0.17
poahh	5775.78	0.52
qfjfg	3659.76	0.07
qocpn	2662.10	0.01
poxlp	1803.47	0.04
qfila	967.02	0.00
potmb	824.05	0.01
qofcm	444.94	0.24
bgjal	213.06	0.05
qofpg	184.75	0.00
gbdga	139.53	0.01
faraz	79.91	0.00
psnah	75.07	0.03
nanogune	47.94	2.20
wakgg	34.87	0.00
arinadm	24.44	0.01
jiads	17.25	0.01
waaap	10.98	0.01
anjbc	0.14	0.00
potss	0.00	0.00

Arina Data Storage Top Users

In the following graph we plot the users having more data in Arina in the last month. If you appear in this graph, we strongly encourage you to reduce your data in Arina.

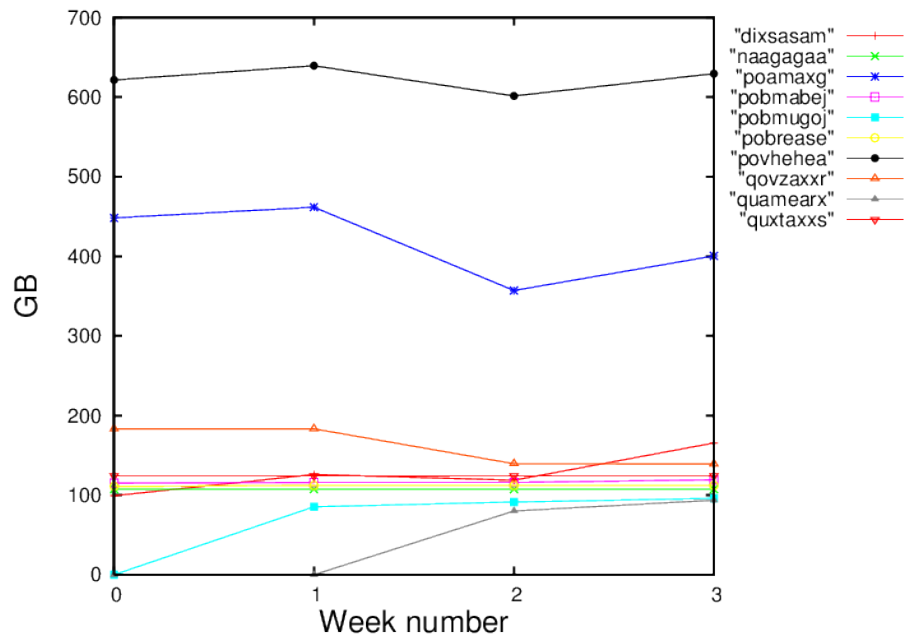


Figure 2: Storage evolution in the last month in GB.