

Estadistics for February/2017

March 27, 2017

Arina

In this brief document we show the usage of arina during February. This month 36543 computing days were used and the average use of the cluster was 70 %. Since the first of December 138817 computing days were used and the average use of the Arina cluster was 83 %. The figure shows the usage of Arina along the month. In the first table the usage of each user is shown. The third column indicates all the time each user has used for calculation during this month. The fourth column shows the average time that each job was waiting before the it started running, in days units. In the second table, the same data as in table 1 collected by group is shown.

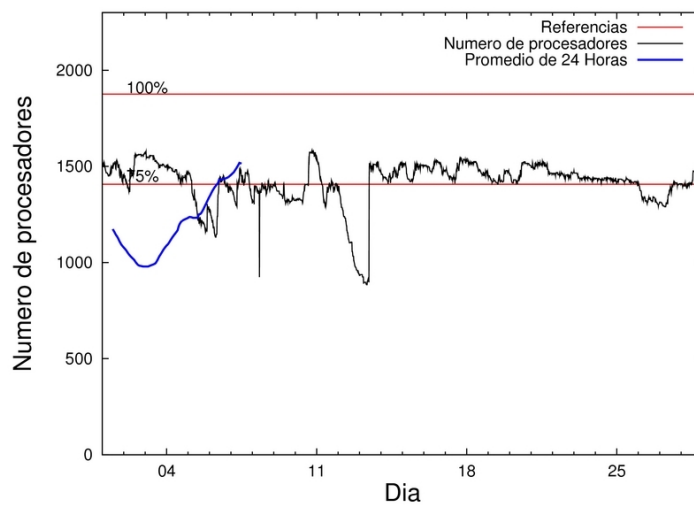


Figure 1: Cluster use. The blue line is a 24 hours average.

Table 1: Calculated time and waiting time in days of the users.

USER	GROUP	Calculated Days	Waiting Time
csazusej	nanogune	6128.78	0.66
povhehea	poahh	4124.99	1.14
poalocad	polymat	1717.97	0.26
pobmabej	potmb	1700.29	0.22
qopgobee	qocpn	1696.06	0.17
povpisim	pomps	1662.98	0.08
scavinam	poemg	1517.24	0.18
kixgrazr	potmb	1415.59	1.18
pobrease	polymat	1391.20	1.05
pobrease	potmb	1262.87	1.10
qfpmamoh	qfila	1254.08	0.36
poamaxg	polymat	1212.33	0.75
quxtaxxs	polymat	1119.37	1.07
quvvalom	qfjfg	862.62	0.73
pobmugoj	pomps	806.64	0.64
povrucif	polymat	727.87	0.31
juranga004	potmb	647.44	0.63
enxararo	egune	595.57	0.20
quainbea	qfjfg	536.76	1.51
qfbgoroj	qfjfg	462.60	0.68
doxcarei	poemg	443.40	0.46
kiadadag	pojoo	404.82	0.69
qovzaxxr	polymat	401.97	0.21
qfjbaprr	qfila	365.89	0.13
favcopee	qfjfg	364.87	3.57
quxmarur	qfjfg	344.98	0.58
kibderua	qofcm	341.85	0.08
favecvep	qfjfg	320.69	0.66
kiaurbao	poxlp	243.68	0.31
scpridei	qofcm	237.03	0.03
pobfoese	polymat	223.64	0.46
qopcomof	qofcm	197.37	0.08
bckmimoj	qfjfg	195.79	0.22
poajejec	polymat	160.18	0.93
quaasanm	qfjfg	151.46	0.57
dixsasam	pojoo	149.36	0.17
pobgrgrs	pomps	123.07	0.02
qoparaya	qofcm	123.04	0.03
qobsalae	qambm	104.94	0.07
mapmemam	megps	101.65	0.33
kiasomal	qocpn	97.13	0.14
kixsasal	pojoo	88.07	2.48
faaatnaa	faraz	87.71	0.03
poanacuj	polymat	85.36	0.91
poaganau	polymat	52.56	0.40
qfbleoni	qfjfg	48.99	0.12
quaqugaj	qfila	30.93	0.01

wubcavaa	wuash	28.30	0.17
poarloi	pojoo	26.29	0.18
bixbrdem	gbdga	23.91	0.06
quaurhei	qfjfg	19.34	1.10
faacalea	qfjfg	16.53	0.44
wepgaara	weaga	16.07	0.08
kiaolfieb	potss	13.81	0.10
pobfoese	poxlp	12.90	0.16
acplaing	jiads	12.41	0.01
poagafrm	pojoo	7.64	0.37
ciairaim	poxlp	6.59	0.34
qfacaarm	qfila	5.37	0.03
pobeieit	poxlp	5.05	0.01
ciaarmeii	pojoo	4.98	0.01
qoprualg	qofpg	3.35	0.00
qoaarecl	qofcm	2.61	0.33
ciazuulm	pojoo	2.52	0.04
bgpmafea	bgjal	1.98	0.00
pobmelat	arinadm	1.70	0.00
mapalmau	megps	0.85	0.02
poairurm	pojoo	0.77	0.01
quapuoli	qocpn	0.37	0.06
qfbloala	qfjfg	0.12	0.04
poplopex	pojoo	0.10	0.24
pobcacad	pojoo	0.05	0.00
wuppobam	wuebp	0.02	0.00
improagj	imfmg	0.02	0.00
ikasle15	pomaster	0.02	0.00
poagumaj	pojoo	0.01	2.48
webogare	arinadm	0.00	0.00
quxlegoa	qfjfg	0.00	0.26
pobsisis	pomps	0.00	0.00
ikasle11	pomaster	0.00	0.00

Table 2: Calculated time and waiting time in days of the groups.

GROUP	Calculated Days	Waiting Time
polymat	7092.46	0.41
nanogune	6128.78	0.66
potmb	5026.19	0.52
poahh	4124.99	1.14
qfjfg	3324.75	0.96
pomps	2592.68	0.18
poemg	1960.64	0.21
qocpn	1793.57	0.17
qfila	1656.27	0.13
qofcm	901.91	0.04
pojoo	684.61	0.46
egune	595.57	0.20
poxlp	268.22	0.25
qambm	104.94	0.07
megps	102.50	0.33
faraz	87.71	0.03
wuash	28.30	0.17
gbdga	23.91	0.06
weaga	16.07	0.08
potss	13.81	0.10
jiads	12.41	0.01
qofpg	3.35	0.00
bgjal	1.98	0.00
arinadm	1.71	0.00
pomaster	0.02	0.00
wuebp	0.02	0.00
imfmg	0.02	0.00

Arina Data Storage Top Users

In the following graph we plot the users having more data in Arina in the last month. If you appear in this graph, we strongly encourage you to reduce your data in Arina.

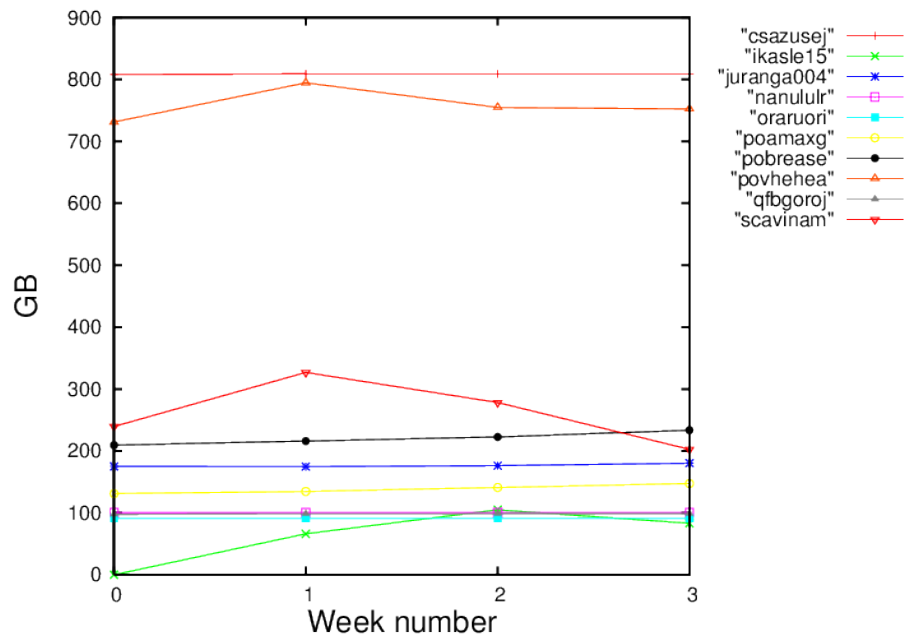


Figure 2: Storage evolution in the last month in GB.