

Estadistics for February/2016

March 29, 2016

Arina

In this brief document we show the usage of arina during February. This month 51925 computing days where used and the the average use of the cluster was 95 %. Since the first of December 154942 computing days where used and the the average use of the Arina cluster was 95 %. The figure shows the usage of Arina along the month. In the first table the usage of each user is shown. The third column indicates all the time each user has used for calculation during this month. The fourth column shows the average time that each job was waiting before the it started running, in days units. In the second table, the same data as in table 1 collected by group is shown.

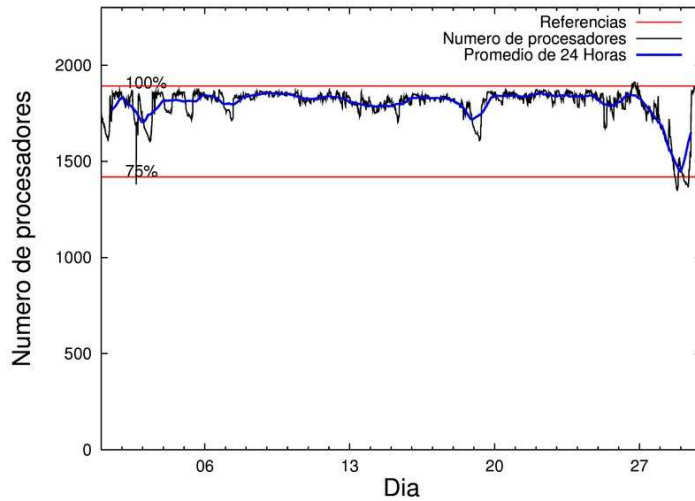


Figure 1: Cluster use. The blue line is a 24 hours average.

Table 1: Calculated time and waiting time in days of the users.

USER	GROUP	Calculated Days	Waiting Time
wavalocm	waijo	7297.80	2.04
quaurhei	qfjfg	4489.29	1.14
bckmimoj	qfjfg	4445.25	0.90
fabusgui	qfjfg	4388.48	10.25
qfbgoroj	qfjfg	4239.66	1.23
povhehea	poahh	3554.14	0.88
povpisim	pomps	2303.94	0.74
poamaxg	polymat	2260.57	1.73
kiasomal	qocpn	2185.28	0.52
poalocad	polymat	1823.37	0.21
pobmugoj	pomps	1341.06	0.19
juranga004	potmb	1095.12	0.61
popugurj	pojuu	982.33	0.08
qopgobee	qocpn	827.64	0.04
pobrease	potmb	819.46	0.49
pobgrgrs	pomps	737.39	0.20
kiadadag	pojuu	671.64	0.31
pobfoese	poxlp	667.96	0.07
kibderua	qofcm	650.69	0.05
gbpbeseg	gbavm	642.62	0.08
pobmabej	potmb	629.92	0.28
povrucif	polymat	618.17	0.25
faacalea	qfjfg	610.52	0.28
poblairi	poxlp	557.36	0.18
povmieci	pojuu	468.94	0.20
qoparaya	qofcm	464.56	0.03
csazusej	nanogune	395.32	0.16
webogare	arinadm	304.18	0.13
qfjbaprij	qfila	287.92	0.02
kiaolfeb	qocpn	280.60	0.08
qopcomof	qofcm	265.33	0.05
qobsalae	qambm	247.93	0.02
pobcacad	pojuu	227.31	0.13
poagiaie	pojuu	171.09	0.36
faaavzae	qfila	125.49	0.02
kixgrazr	potmb	119.42	0.09
poakaxxb	polymat	115.70	0.24
poarloi	pojuu	102.59	0.27
kivpepor	kirpp	80.47	0.34
kiarorom	poxlp	67.60	0.14
wubcavaa	wuash	55.02	0.05
poagumaj	pojuu	50.08	0.30
anpgaetk	anjbc	42.57	0.05
kixbebej	poxlp	39.42	0.11
qovzaxxr	polymat	38.65	0.08
mapalmau	qtftp	36.66	0.95
qoprualg	qofpg	34.56	0.01

favcopee	qfjfg	26.19	0.45
poplopex	pojju	13.57	0.02
kiaurbao	poxlp	13.05	0.31
faaatnaa	faraz	12.82	0.09
poajejec	polymat	8.65	0.02
qfbleoni	qfjfg	8.00	0.06
quvvalom	qfjfg	3.89	0.38
qfpmamoh	qfila	2.26	0.00
pobmelat	arinadm	2.02	0.06
kiadugat	poxlp	1.56	0.00
quxlegoa	qfjfg	1.51	0.32
wuppobam	wuebp	1.33	0.00
quapuoli	qocpn	0.76	0.06
qfpmamav	qfila	0.72	0.00
oraruori	polymat	0.58	0.07
poairurm	pojju	0.17	0.04
povracoe	pomps	0.12	0.01
poatealx	pojju	0.02	0.00
qfbloala	qfjfg	0.01	0.14
pobromam	pomps	0.00	0.03
poagafrm	pojju	0.00	0.01

Table 2: Calculated time and waiting time in days of the groups.

GROUP	Calculated Days	Waiting Time
qjfg	18212.82	5.07
waijo	7297.80	2.04
polymat	4865.69	0.27
pomps	4382.51	0.29
poahh	3554.14	0.88
qocpn	3294.28	0.23
pojoo	2687.75	0.13
potmb	2663.92	0.39
qofcm	1380.57	0.04
poxlp	1346.96	0.14
gbavm	642.62	0.08
qfla	416.39	0.02
nanogune	395.32	0.16
arinadm	306.20	0.09
qambm	247.93	0.02
kirpp	80.47	0.34
wuash	55.02	0.05
anjbc	42.57	0.05
qtftp	36.66	0.95
qofpg	34.56	0.01
faraz	12.82	0.09
wuebp	1.33	0.00

Arina Data Storage Top Users

In the following graph we plot the users having more data in Arina in the last month. If you appear in this graph, we strongly encourage you to reduce your data in Arina.

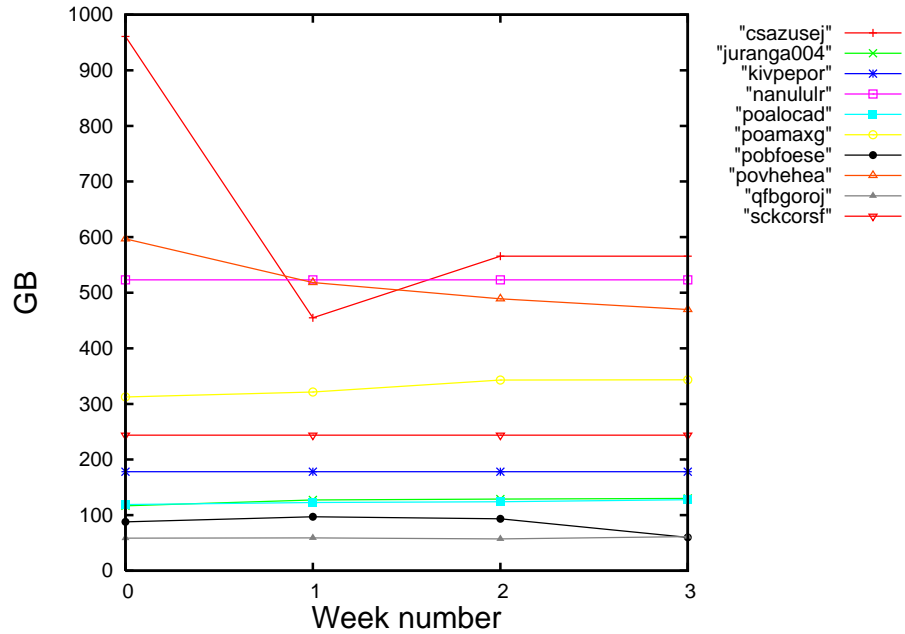


Figure 2: Storage evolution in the last month in GB.