

Estadistics for February/2015

March 2, 2015

Arina

In this brief document we show the usage of arina during February. This month 45223 computing days were used and the the average use of the cluster was 84 %. Since the first of December 143402 computing days were used and the the average use of the Arina cluster was 83 %. The figure shows the usage of Arina along the month. In the first table the usage of each user is shown. The third column indicates all the time each user has used for calculation during this month. The fourth column shows the average time that each job was waiting before the it started running, in days units. In the second table, the same data as in table 1 collected by group is shown.

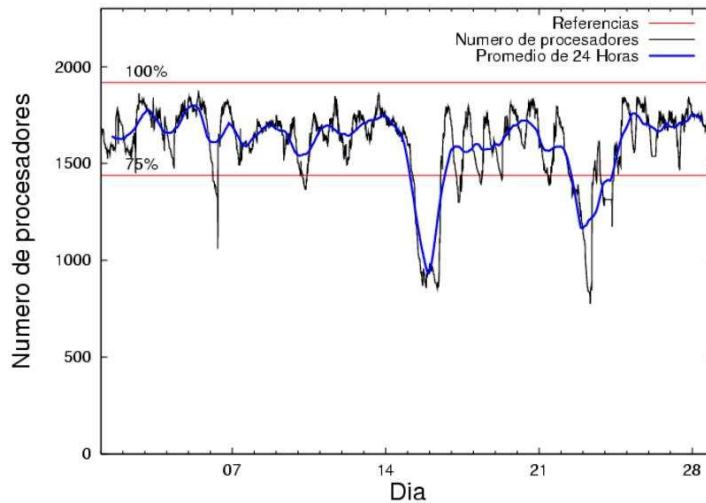


Figure 1: Cluster use. The blue line is a 24 hours average.

Table 1: Calculated time and waiting time in days of the users.

USER	GROUP	Calculated Days	Waiting Time
sckcorsf	nanogune	21035.40	2.41
juranga004	potmb	3536.05	0.02
povhehea	poahh	3028.01	1.25
povpisim	pomps	2250.54	0.04
pobmabej	potmb	1752.01	0.01
poamaxg	polymat	1723.76	0.04
kivpepor	kirpp	1540.60	0.09
qfbgoroj	qfjfg	1223.64	0.03
upetralanda001	wdaga	1132.92	0.12
povrucif	polymat	965.29	0.01
poblairo	poxlp	623.59	0.01
fabusgui	qfjfg	601.49	0.35
pobmugoj	pomps	598.65	0.05
poalocad	polymat	490.35	0.00
qopgobee	qocpn	472.15	0.00
pobrease	potmb	470.09	0.10
pobgrgs	pomps	456.10	0.01
pmarkaide001	ggmer	428.98	0.05
bckmimoj	qfjfg	416.36	0.01
anpgaetk	anjbc	270.66	0.04
naaalcaa	nanopeji	268.21	0.04
qovzaxxr	polymat	264.41	0.01
sckwankm	waars	255.77	0.02
qfpbaprj	qfila	216.66	0.00
webogare	arinadm	201.42	0.03
kiaolfeb	qocpn	143.69	0.00
kiasomal	qocpn	119.52	0.01
pobfoese	poxlp	104.97	0.00
kixgrazr	potmb	102.58	0.07
qobsalae	qambm	100.28	0.00
quaurhei	qfjfg	85.27	0.00
csazusej	nanogune	77.38	0.04
kixbebej	poxlp	72.88	0.03
nanululr	nanogune	63.67	0.31
qopcomof	qofcm	23.01	0.00
kibderua	qofcm	20.94	0.00
wepgaara	weaga	13.66	0.03
gaazareg	injss	10.55	0.02
wubcavaa	wuash	9.17	0.13
qobmimuj	lgsgi	8.57	0.00
qoparaya	qofcm	7.90	0.01
qfbleoni	qfjfg	7.42	0.00
pobinini	poxlp	7.42	0.00
ciaazapj	poxlp	5.66	0.00
mtpmafel	mtgfa	5.33	0.00
bixbrdem	gbdga	4.58	0.00
qfpmamoh	qfila	3.57	0.00

pobmelat	arinadm	2.56	0.00
qfxaldad	qflp	1.88	0.01
meamejaj	mejst	1.50	0.00
qfparsaf	qfjfg	0.25	0.00
gfpagrom	ggmer	0.23	0.00
waxpoxxy	waars	0.00	0.06
pobromam	pomps	0.00	0.02
kiaurbao	poxlp	0.00	0.00
fabsazob	fajbr	0.00	0.00

Table 2: Calculated time and waiting time in days of the groups.

GROUP	Calculated Days	Waiting Time
nanogune	21176.44	2.29
potmb	5860.73	0.02
polymat	3443.81	0.01
pomps	3305.30	0.04
poahh	3028.01	1.25
qfjfg	2334.43	0.03
kirpp	1540.60	0.09
wdaga	1132.92	0.12
poxlp	814.52	0.01
qocpn	735.36	0.00
ggmer	429.21	0.05
anjbc	270.66	0.04
nanopeji	268.21	0.04
waars	255.77	0.02
qfila	220.23	0.00
arinadm	203.97	0.02
qambm	100.28	0.00
qofcm	51.85	0.01
weaga	13.66	0.03
injss	10.55	0.02
wuash	9.17	0.13
lgsgi	8.57	0.00
mtgfa	5.33	0.00
gbdga	4.58	0.00
qflp	1.88	0.01
mejst	1.50	0.00
fajbr	0.00	0.00

Arina Data Storage Top Users

In the following graph we plot the users having more data in Arina in the last month. If you appear in this graph, we strongly encourage you to reduce your data in Arina.

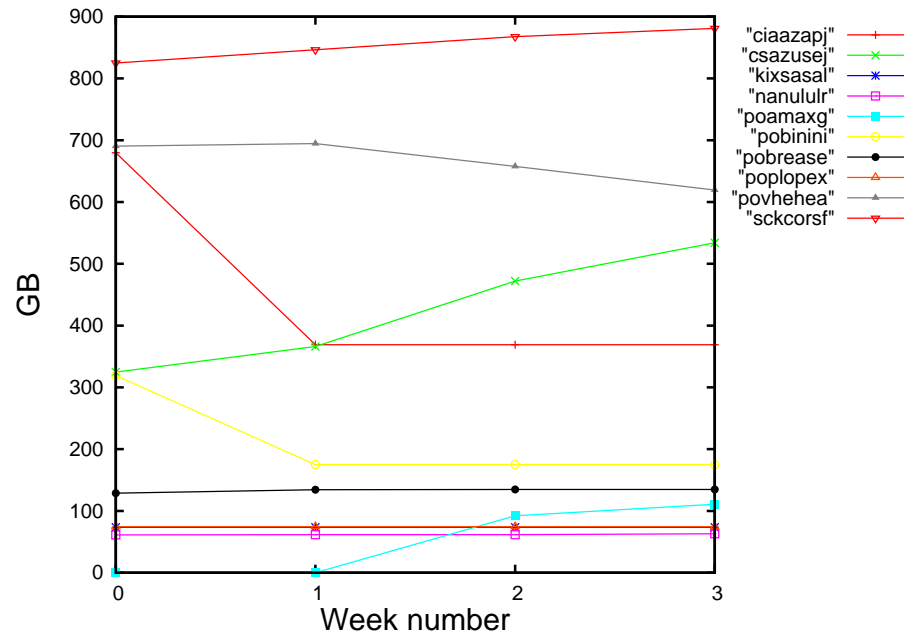


Figure 2: Storage evolution in the last month in GB.

Péndulo

This month 12 computing days were used in **Péndulo** and the the average use of the cluster was 1 %. Since the first of December 5884 computing days were used and the the average use of the cluster was 16 %. The figure shows the usage of Péndulo along the month. In the first table the usage of each user is shown. The third column indicates all the time each user has used for calculation during this month. The fourth column shows the average time that each job was waiting before the it started running, in days units. In the second table, the same data as in table 1 collected by group is shown.

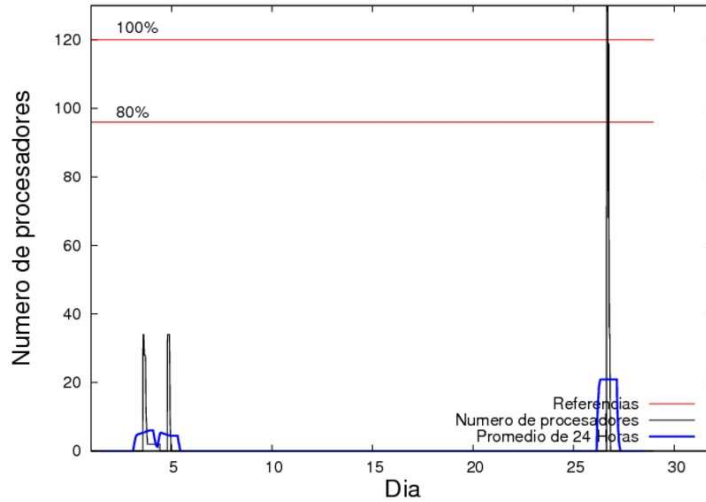


Figure 3: Cluster use. The blue line is a 24 hours average.

Table 3: Calculated time and waiting time in days of the users.

USER	GROUP	Calculated Days	Waiting Time
jtppragg	jtjob	12.31	0.33

Table 4: Calculated time and waiting time in days of the groups.

GROUP	Calculated Days	Waiting Time
jtjob	12.31	0.33