

Estadistics for February/2014

March 3, 2014

Arina

In this brief document we show the usage of arina during February. This month 33065 computing days were used and the the average use of the cluster was 90 %. Since the first of December 102322 computing days were used and the the average use of the Arina cluster was 85 %. The figure shows the usage of Arina along the month. In the first table the usage of each user is shown. The third column indicates all the time each user has used for calculation during this month. The fourth column shows the average time that each job was waiting before the it started running, in days units. In the second table, the same data as in table 1 collected by group is shown.

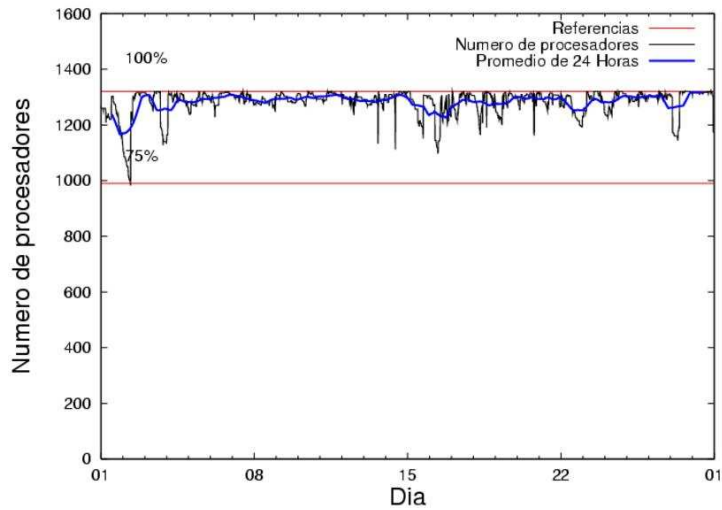


Figure 1: Cluster use. The blue line is a 24 hours average.

Table 1: Calculated time and waiting time in days of the users.

USER	GROUP	Calculated Days	Waiting Time
csazusej	nanogune	8648.85	0.77
sckcorsf	nanogune	3215.09	0.38
popugurj	pojuu	2724.30	8.26
scpzuola	qorz	2457.49	5.82
povhehea	poahh	2256.10	1.01
favcopee	qfjfg	2209.94	12.19
naxyiyib	nanogune	1791.21	0.16
povwawaj	pojuu	1443.57	0.26
povrucif	polymat	755.48	0.40
gaazareg	injss	670.77	0.25
pobgrgrs	pojuu	662.29	0.44
pobmugoj	pojuu	619.49	0.36
juranga004	potmb	555.58	0.61
qobsalae	qambm	474.00	0.65
pobrease	potss	472.90	0.54
povpisim	pomps	421.75	0.08
qopgobee	qocpn	366.91	0.23
qovzaxxr	qorz	343.40	2.87
quaurhei	qfjfg	268.38	2.17
qoprualg	qofpg	256.40	0.27
ciaazapj	poxlp	252.92	1.53
qfbgoroj	qfjfg	245.23	0.84
pobrease	pojuu	213.44	7.18
poalolog	poxlp	186.78	0.31
pobinini	pojuu	179.39	0.55
kibderua	qofcm	145.94	0.10
poplopex	pojuu	135.15	0.53
sgkluqun	pojuu	121.33	0.27
kixsasal	pojuu	112.83	0.84
ekpvebaa	ekjgm	111.58	0.62
qfjbaprj	qfila	105.34	0.19
naaalcaa	nanopeji	86.02	0.48
favecvep	qfjfg	63.46	0.29
bckmimoj	qfjfg	61.50	0.29
wubcavaa	wuash	53.08	6.06
mapalmau	qtftp	51.99	2.40
quxlegoa	qfjfg	50.12	1.50
wmpabuf	wmjcd	47.03	0.42
mapmemam	qtftp	39.18	0.25
pobfoese	poxlp	37.94	0.31
qoaarecl	qofcm	36.37	0.43
fabusgui	qfjfg	36.27	0.16
cixesesb	poxlp	24.27	1.09
qobfifib	qocpn	13.24	0.15
pobmabej	pojuu	10.63	0.41
inpleibf	infi	5.87	0.10
bavfepem	pojuu	5.38	0.23

mtpmafel	mtgfa	3.87	0.99
wuppobam	wuebp	3.29	0.27
baxrarat	baeaa	2.64	0.12
oipbibij	oijbb	2.60	0.13
ggplaarj	ggmer	2.41	0.24
quaduree	qfila	1.49	0.01
pobinini	poxlp	0.67	0.00
wabpepaa	waars	0.60	0.00
webogare	arinadm	0.50	0.02
pobmelat	arinadm	0.46	0.00
qfpesmai	qfila	0.30	0.00
qobmimuj	lgsgi	0.24	0.46
qfxaldad	qfllp	0.00	0.11

Table 2: Calculated time and waiting time in days of the groups.

GROUP	Calculated Days	Waiting Time
nanogune	13655.16	0.70
pojuu	6227.82	0.50
qfjfg	2934.90	3.40
qorzz	2800.89	5.40
poahh	2256.10	1.01
polymat	755.48	0.40
injss	670.77	0.25
potmb	555.58	0.61
poxlp	502.58	0.55
qambm	474.00	0.65
potss	472.90	0.54
pomps	421.75	0.08
qocpn	380.15	0.22
qofpg	256.40	0.27
qofcm	182.31	0.14
ekjgm	111.58	0.62
qfla	107.13	0.15
qtftp	91.17	1.24
nanopeji	86.02	0.48
wuash	53.08	6.06
wmjcd	47.03	0.42
infl	5.87	0.10
mtgfa	3.87	0.99
wuebp	3.29	0.27
baeaa	2.64	0.12
oijbb	2.60	0.13
ggmer	2.41	0.24
arinadm	0.97	0.01
waars	0.60	0.00
lgsgi	0.24	0.46
qflp	0.00	0.11

Arina Data Storage Top Users

In the following graph we plot the users having more data in Arina in the last month. If you appear in this graph, we strongly encourage you to reduce your data in Arina.

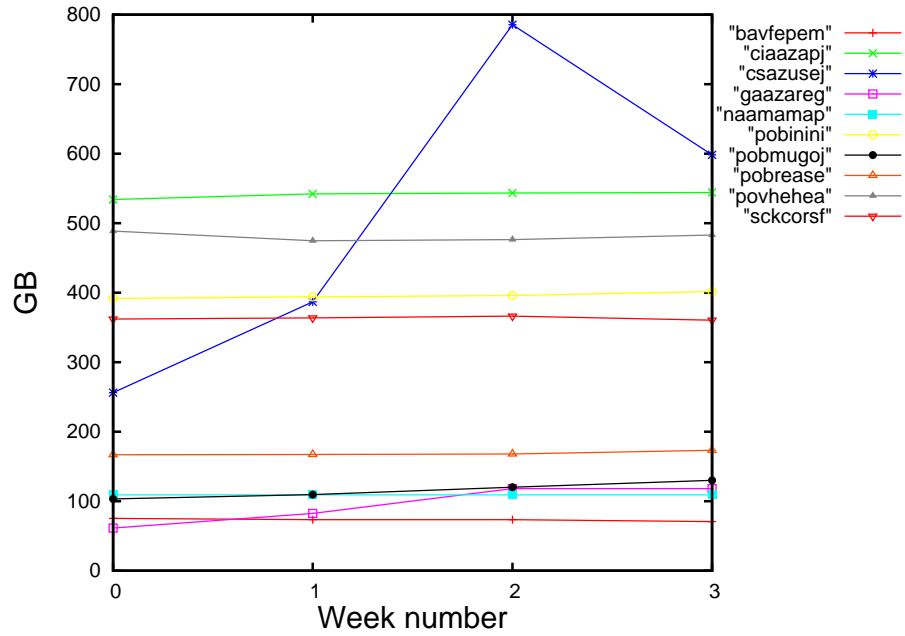


Figure 2: Storage evolution in the last month in GB.

Péndulo

This month 561 computing days were used in **Péndulo** and the the average use of the cluster was 28 %. Since the first of December 1031 computing days were used and the the average use of the cluster was 14 %. The figure shows the usage of Péndulo along the month. In the first table the usage of each user is shown. The third column indicates all the time each user has used for calculation during this month. The fourth column shows the average time that each job was waiting before the it started running, in days units. In the second table, the same data as in table 1 collected by group is shown.

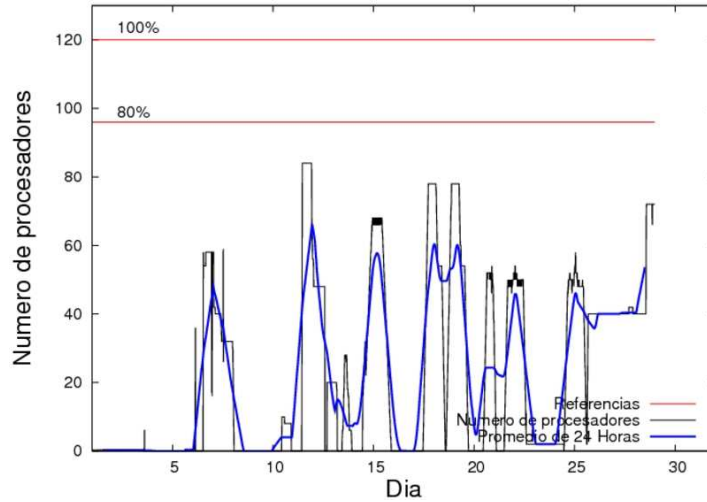


Figure 3: Cluster use. The blue line is a 24 hours average.

Table 3: Calculated time and waiting time in days of the users.

USER	GROUP	Calculated Days	Waiting Time
qovzaxxr	qofcm	538.34	0.04
qovzaxxr	qorzz	28.09	0.00
webogare	arinadm	1.56	0.00
mtpmafel	mtgfa	0.00	2.91

Table 4: Calculated time and waiting time in days of the groups.

GROUP	Calculated Days	Waiting Time
qofcm	538.34	0.04
qorzz	28.09	0.00
arinadm	1.56	0.00
mtgfa	0.00	2.91