

Estadistics for February/2013

March 14, 2013

Arina

In this brief document we show the usage of arina during February. This month 40104 computing days were used and the the average use of the cluster was 105 %. Since the first of December 106097 computing days were used and the the average use of the Arina cluster was 87 %. The figure shows the usage of Arina along the month. In the first table the usage of each user is shown. The third column indicates all the time each user has used for calculation during this month. The fourth column shows the average time that each job was waiting before the it started running, in days units. In the second table, the same data as in table 1 collected by group is shown.

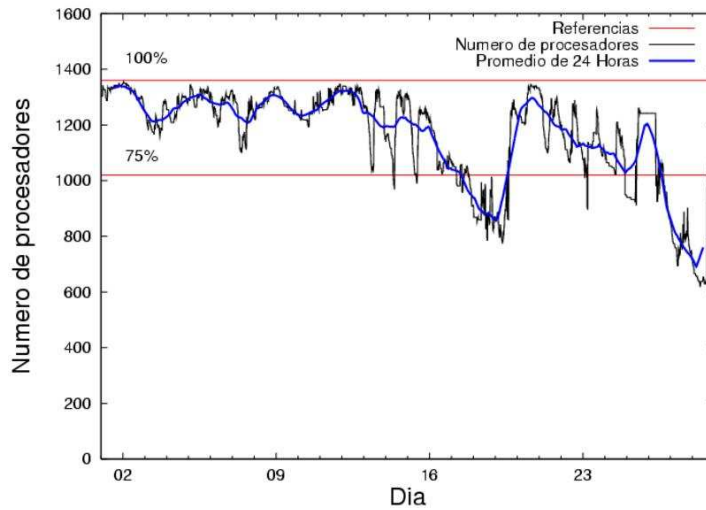


Figure 1: Cluster use. The blue line is a 24 hours average.

Table 1: Calculated time and waiting time in days of the users.

USER	GROUP	Calculated Days	Waiting Time
sckcorsf	nanogune	18743.17	3.82
scpzuola	qorzz	5110.28	1.02
csazusej	nanogune	3386.06	0.49
povwawaj	pojuu	1765.30	0.24
kibderua	qofcm	1225.71	0.06
ciaazapj	poxlp	1134.81	0.10
pobmugoj	pojuu	1083.28	0.03
pobrease	potss	775.98	0.14
kibmeheg	pojuu	757.77	0.03
pobrease	pojuu	705.69	0.07
qoaarecl	qofcm	652.89	0.05
povhehea	poahh	643.29	0.15
povrucif	poxlp	508.28	0.03
cixesesb	poxlp	429.53	0.25
bckmimoj	qfjfg	373.97	0.02
favcopee	qfjfg	363.15	1.36
qobconde	qofcm	333.93	0.05
webogare	arinadm	266.05	0.02
pobinini	pojuu	250.71	0.01
qopgobee	qocpn	227.22	0.02
pobgrgrs	pojuu	207.03	0.08
waxpoxxy	waars	192.22	0.11
qoparaya	qofcm	165.91	0.03
popugurj	pojuu	157.76	0.02
poalolog	poxlp	140.55	0.06
qobmimuj	lgsgi	130.88	0.01
quxlegoa	qfjfg	118.52	2.13
iapgarue	iaegr	91.97	0.47
sgkluqun	pojuu	43.05	0.01
pmarkaide001	ggmer	33.44	0.28
poplopex	pojuu	18.69	0.08
juranga004	potmb	15.74	0.00
ccpyumej	ccbsa	15.52	0.09
acblonou	ccjla	14.47	0.74
kixsasal	pojuu	13.12	0.22
qoprualg	qofpg	4.32	0.11
qfploarf	qfila	4.00	0.01
poblairo	poxlp	3.26	0.00
qfpbaprij	qfila	2.31	0.00
qfpmamoh	qfila	2.06	0.00
pobmelat	arinadm	0.48	0.00
qfpesmai	qfila	0.34	0.00
wuppobam	wuebp	0.11	0.00
bixcobum	gbdga	0.00	0.09

Table 2: Calculated time and waiting time in days of the groups.

GROUP	Calculated Days	Waiting Time
nanogune	22129.24	1.41
qorzz	5110.28	1.02
pojju	5002.40	0.06
qofcm	2378.45	0.05
poxlp	2216.43	0.06
qjfg	855.63	1.03
potss	775.98	0.14
poahh	643.29	0.15
arinadm	266.53	0.01
qocpn	227.22	0.02
waars	192.22	0.11
lgsgi	130.88	0.01
iaegr	91.97	0.47
ggmer	33.44	0.28
potmb	15.74	0.00
ccbsa	15.52	0.09
ccjla	14.47	0.74
qfila	8.71	0.00
qofpg	4.32	0.11
wuebp	0.11	0.00
gbdga	0.00	0.09

Arina Data Storage Top Users

In the following graph we plot the users having more data in Arina in the last month. If you appear in this graph, we strongly encourage you to reduce your data in Arina.

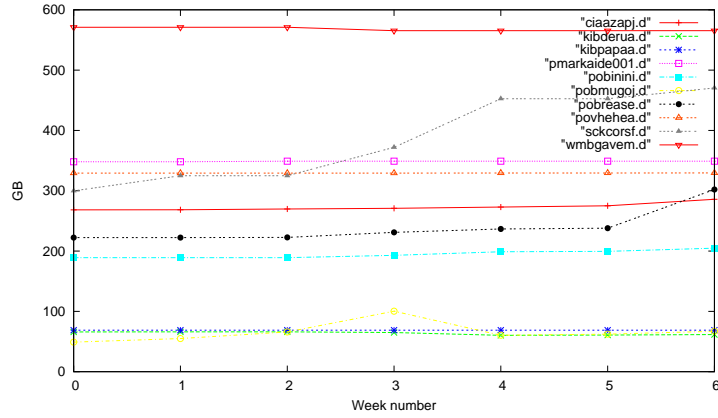


Figure 2: Storage evolution in the last month (in GB).

Péndulo

This month 53 computing days were used in **Péndulo** and the the average use of the cluster was 3 %. Since the first of December 0 computing days were used and the the average use of the cluster was 0 %. The figure shows the usage of Péndulo along the month. In the first table the usage of each user is shown. The third column indicates all the time each user has used for calculation during this month. The fourth column shows the average time that each job was waiting before the it started running, in days units. In the second table, the same data as in table 1 collected by group is shown.

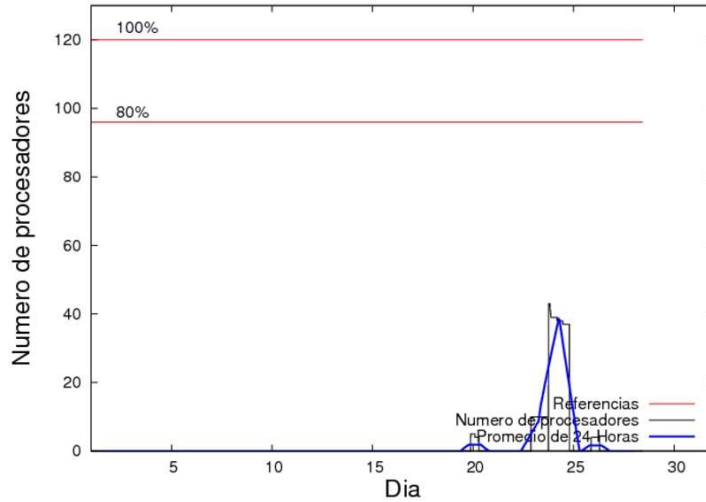


Figure 3: Cluster use. The blue line is a 24 hours average.

Table 3: Calculated time and waiting time in days of the users.

USER	GROUP	Calculated Days	Waiting Time
mtpmafel	mtgfa	53.09	0.25

Table 4: Calculated time and waiting time in days of the groups.

GROUP	Calculated Days	Waiting Time
mtgfa	53.09	0.25

Ikerbasque machine

The service has access to 208 xeon cores in this machine, which are older than Arina's ones. The codes of only few big users are maintained there to optimize the maintenance time. This month 9032 computing days were used in **Ikerbasque** machine and the the average use of the cluster was 155 %. Since the first of December 19001 computing days were used and the the average use of the cluster was 101 %. In the first table the usage of each user is shown. The third column indicates all the time each user has used for calculation during this month. The fourth column shows the average time that each job was waiting before the it started running, in days units. In the second table, the same data as in table 1 collected by group is shown.

Table 5: Calculated time and waiting time in days of the users.

USER	GROUP	Calculated Days	Waiting Time
scpzuola	qorzz	6076.0	0.00
pobmugoj	pojju	1643.0	0.00
pobmelat	arinadm	1312	0.00

Table 6: Calculated time and waiting time in days of the groups.

GROUP	Calculated Days	Waiting Time
qorzz	6076.0	
pojju	1643.0	
arinadm	1312.81	0.0