

Estadistics for February/2012

March 5, 2012

Arina

In this brief document we show the usage of arina during February. This month 34695 computing days where used and the the average use of the cluster was 86 %. Since the first of December 77970 computing days where used and the the average use of the cluster was 62 %. The figure shows the usage of Arina along the month. In the first table the usage of each user is shown. The third column indicates all the time each user has used for calculation during this month. The fourth column shows the average time that each job was waiting before the it started running, in days units. In the second table, the same data as in table 1 collected by group is shown.

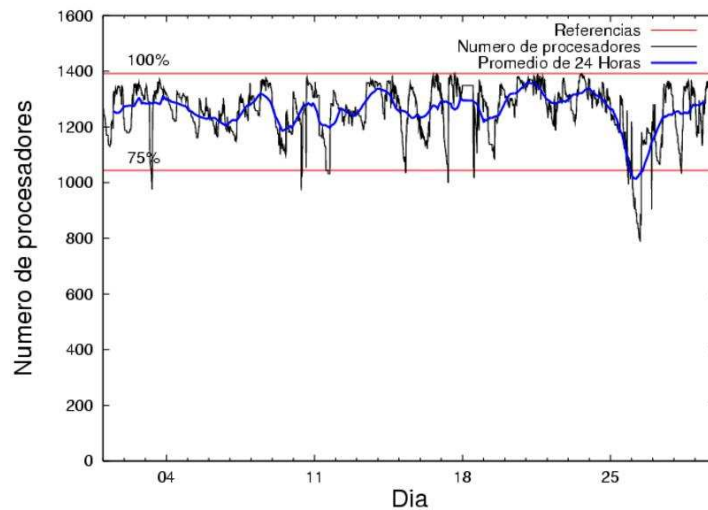


Figure 1: Cluster use. The blue line is a 24 hours average.

Table 1: Calculated time and waiting time in days of the users.

USER	GROUP	Calculated Days	Waiting Time
kibpapaa	qorzz	5445.88	1.29
scpzuola	qorzz	4491.67	1.04
pobrease	potss	4171.07	0.30
ggpmoasi	ggmer	2629.02	3.17
kibmeheg	pojoo	1825.01	0.29
povhehea	poahh	1786.51	0.01
pobrease	pojoo	1476.99	0.41
povwawaj	pojoo	1214.89	0.14
wmbgavem	waets	1091.68	0.19
favecvep	qfjfg	983.77	0.66
cixesesb	poxlp	936.34	0.87
bbpbabia	bbabb	786.98	0.09
qfbleoni	qfjfg	766.89	0.08
ciaazapj	poxlp	697.06	0.06
etpdihei	etjfm	673.39	0.00
pobmabej	pojoo	602.20	0.18
qovzaxxr	qorzz	565.84	0.12
pobgrgrs	pojoo	475.59	0.07
qoaarecl	qofcm	473.69	0.16
qoparaya	qofcm	375.50	0.06
qopgobee	qocpn	357.98	0.04
kibderua	qofcm	321.29	0.11
webogare	arinadm	246.49	0.01
mapmemam	qtftp	233.58	0.36
pobmelat	arinadm	233.38	0.01
povrucif	poxlp	219.62	0.06
poalolog	poxlp	213.31	0.19
favcopee	qfjfg	201.02	0.22
bcpremae	bcdbu	174.53	0.10
acblonou	ccjla	162.89	0.36
sckcorsf	nanogune	149.98	0.14
wmpetali	wdaga	147.07	0.06
waptctce	waets	122.67	0.08
waxpoxxy	waars	104.22	0.14
qoprualg	qofpg	86.26	0.03
pobmugoj	pojoo	65.01	0.08
iapgarue	iaegr	52.56	0.08
qfpmamoh	qfila	37.73	0.01
popugurj	pojoo	21.37	0.05
pobinini	pojoo	20.11	0.03
bcpfimaa	mimam	19.13	0.01
qobconde	qofcm	12.02	0.28
qfbloala	qfala	9.75	0.02
qfbbaprj	qfila	8.12	0.05
poplopex	pojoo	2.17	0.10
wabpepaa	waars	1.11	0.41
wapgoesj	wakgg	1.05	0.01

mapalmau	magps	0.93	0.03
qfploarf	qfila	0.75	0.00
qopcomof	qofcm	0.74	0.01
bcpitaia	bcizb	0.34	0.02
poblauro	poxlp	0.05	0.11
qfpeimai	qfila	0.01	0.00
bcprpae	bcrar	0.01	0.00
wabgalaj	waars	0.00	0.04
sckwankm	waars	0.00	0.01
nabzezem	nanogune	0.00	0.01

Table 2: Calculated time and waiting time in days of the groups.

GROUP	Calculated Days	Waiting Time
qorzz	10503.40	1.07
pojuu	5703.34	0.10
potss	4171.07	0.30
gmer	2629.02	3.17
poxlp	2066.38	0.09
qjfg	1951.68	0.51
poahh	1786.51	0.01
waets	1214.34	0.17
qofcm	1183.25	0.11
bbabb	786.98	0.09
etjfm	673.39	0.00
arinadm	479.87	0.01
qocpn	357.98	0.04
qtftp	233.58	0.36
bedbu	174.53	0.10
cejla	162.89	0.36
nanogune	149.98	0.13
wdaga	147.07	0.06
waars	105.34	0.15
qofpg	86.26	0.03
iaegr	52.56	0.08
qfila	46.61	0.01
mimam	19.13	0.01
qfala	9.75	0.02
wakgg	1.05	0.01
magps	0.93	0.03
bcizb	0.34	0.02
bcrar	0.01	0.00

Pendolo

This month 19 computing days were used in **Pendolo** and the the average use of the cluster was 1 %. Since the first of December 206 computing days were used and the the average use of the cluster was 3 %. The figure shows the usage of Pendolo along the month. In the first table the usage of each user is shown. The third column indicates all the time each user has used for calculation during this month. The fourth column shows the average time that each job was waiting before the it started running, in days units. In the second table, the same data as in table 1 collected by group is shown.

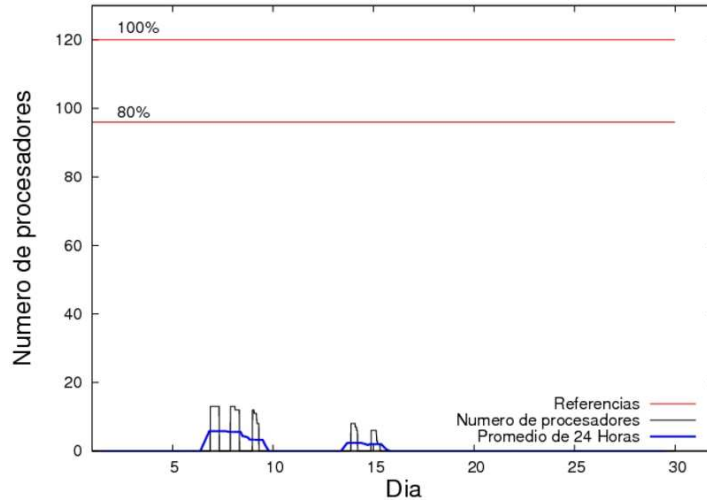


Figure 2: Cluster use. The blue line is a 24 hours average.

Table 3: Calculated time and waiting time in days of the users.

USER	GROUP	Calculated Days	Waiting Time
------	-------	-----------------	--------------

Table 4: Calculated time and waiting time in days of the groups.

GROUP	Calculated Days	Waiting Time
-------	-----------------	--------------

Ikerbasque machine

The service has access to 208 xeon cores in this machine, which are older than Arina's ones. The codes of only few big users are maintained there to optimize the maintenance time. This month 3970 computing days were used in **Ikerbasque** machine and the the average use of the cluster was 66 %. Since the first of December 5722 computing days were used and the the average use of the cluster was 30 %. In the first table the usage of each user is shown. The third column indicates all the time each user has used for calculation during this month. The fourth column shows the average time that each job was waiting before the it started running, in days units. In the second table, the same data as in table 1 collected by group is shown.

Table 5: Calculated time and waiting time in days of the users.

USER	GROUP	Calculated Days	Waiting Time
kibpapaa	qorzz	2032.02	0.77
scpzuola	qorzz	1381.63	0.94
qovzaxxr	qorzz	556.19	0.33

Table 6: Calculated time and waiting time in days of the groups.

GROUP	Calculated Days	Waiting Time
qorzz	3969.83	0.88