

Estadistics for February/2011

March 1, 2011

Arina

In this brief document we show the usage of arina during February. This month 20708 computing days were used and the the average use of the cluster was 98 %. Since the first of June 51052 computing days were used and the the average use of the cluster was 76 %. The figure shows the usage of Arina along the month. In the first table the usage of each user is shown. The third column indicates all the time each user has used for calculation during this month. The fourth column shows the average time that each job was waiting before the it started running, in days units. In the second table, the same data as in table 1 collected by group is shown.

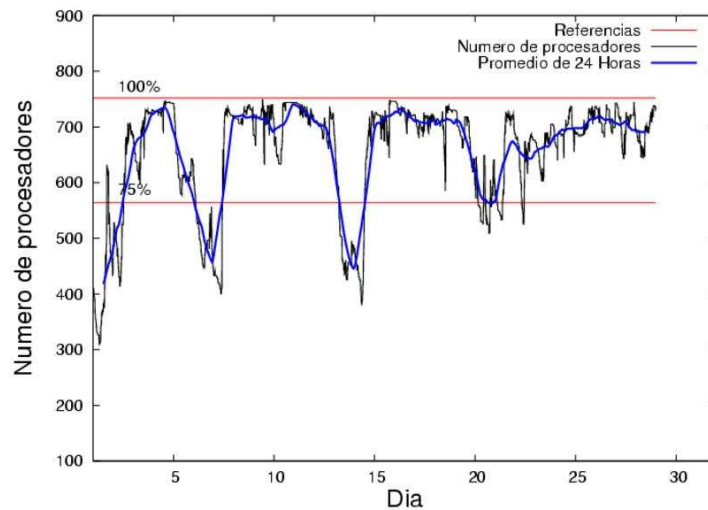


Figure 1: Cluster use. The blue line is a 24 hours average.

Table 1: Calculated time and waiting time in days of the users.

USER	GROUP	Calculated Days	Waiting Time
povhehea	poahh	6242.69	0.28
scpzuola	qorzz	2221.59	0.84
qfbleoni	qffca	2069.44	0.46
kibderua	qofcm	1308.41	0.05
qoaarecl	qofcm	1162.53	0.07
pobmugoj	pojuu	882.97	0.05
favcopee	qfjfg	878.40	0.66
wmbgavem	waets	809.80	0.12
poblairo	poxlp	646.77	0.29
poalolog	poxlp	608.97	0.45
waptctce	waets	558.04	0.09
pobgrgrs	pojuu	535.25	0.08
favecvcp	qfjfg	406.05	0.42
povrucif	poxlp	294.61	0.10
qopgobee	qocpn	265.21	0.08
pobrease	potss	259.73	0.30
pobrease	pojuu	209.31	0.11
quxlegoa	qfjfg	183.30	0.27
pobmelat	arinadm	178.76	0.06
kivremey	qpjag	146.80	0.08
povwawaj	pojuu	120.94	0.02
qopcomof	qofcm	120.40	0.03
upetralanda001	wdaga	101.57	0.28
ciaazapj	poxlp	93.17	0.10
qfpgapae	qfegp	56.80	0.23
qfbagcae	qffca	52.76	0.02
qoprualg	qofpg	44.69	0.03
qoparaya	qofcm	39.21	0.01
poplopex	pojuu	38.43	0.03
bckmimoj	qfjfg	32.26	0.09
wabgalaj	waars	31.57	0.12
qobmimuj	lgsgi	29.48	0.16
webogare	arinadm	22.65	0.05
pobmabej	pojuu	18.89	0.02
epppema	iaffm	17.63	0.00
qfbbaprj	qfila	8.73	0.04
ggpsamam	ggmer	6.11	0.02
wabeslel	waars	1.96	0.02
bcpdiaro	zoicu	1.54	0.00
pobfoese	poxlp	0.51	0.00
ccbsaalr	ccjla	0.24	0.00
pobinini	pojuu	0.12	0.00
wuppobam	wuebp	0.07	0.02
bcpremae	bcdbu	0.06	0.00

Table 2: Calculated time and waiting time in days of the groups.

GROUP	Calculated Days	Waiting Time
poahh	6242.69	0.28
qofcm	2630.55	0.06
qorzz	2221.59	0.84
qffca	2122.21	0.44
pojju	1805.91	0.04
poxlp	1644.04	0.15
qfjfg	1500.01	0.49
waets	1367.84	0.11
qocpn	265.21	0.08
potss	259.73	0.30
arinadm	201.41	0.05
qpjag	146.80	0.08
wdaga	101.57	0.28
qfegp	56.80	0.23
qofpg	44.69	0.03
waars	33.53	0.06
lgsgi	29.48	0.16
iaffm	17.63	0.00
qfila	8.73	0.04
ggmer	6.11	0.02
zoicu	1.54	0.00
ccjla	0.24	0.00
wuebp	0.07	0.02
bcdbu	0.06	0.00

Pendolo

This month 153 computing days were used in **Pendolo** and the the average use of the cluster was 8 %. Since the first of December 297 computing days were used and the the average use of the cluster was 4 %. The figure shows the usage of Pendolo along the month. In the first table the usage of each user is shown. The third column indicates all the time each user has used for calculation during this month. The fourth column shows the average time that each job was waiting before the it started running, in days units. In the second table, the same data as in table 1 collected by group is shown.

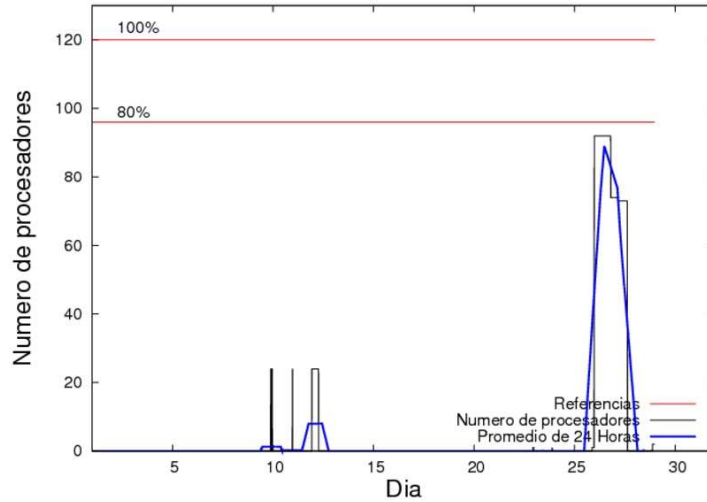


Figure 2: Cluster use. The blue line is a 24 hours average.

Table 3: Calculated time and waiting time in days of the users.

USER	GROUP	Calculated Days	Waiting Time
jtppragg	jtjob	138.51	0.19
webogare	arinadm	9.69	0.02
mtpmafel	mtgfa	4.94	14.40

Table 4: Calculated time and waiting time in days of the groups.

GROUP	Calculated Days	Waiting Time
jtjob	138.51	0.19
arinadm	9.69	0.02
mtgfa	4.94	14.40