

# Estadistics for January/2019

February 1, 2019

## Arina

In this brief document we show the usage of arina during January. This month 99830 computing days where used and the the average use of the cluster was 86 %. Since the first of December 197747 computing days where used and the the average use of the Arina cluster was 86 %. The figure shows the usage of Arina along the month. In the first table the usage of each user is shown. The third column indicates all the time each user has used for calculation during this month. The fourth column shows the average time that each job was waiting before the it started running, in days units. In the second table, the same data as in table 1 collected by group is shown.

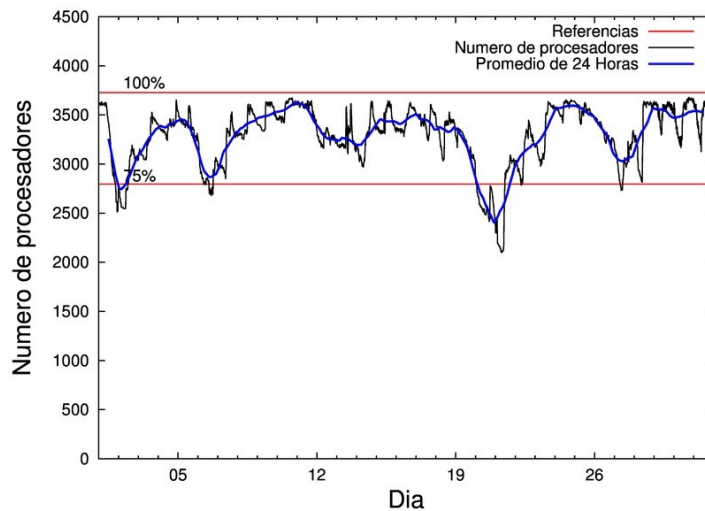


Figure 1: Cluster use. The blue line is a 24 hours average.

Table 1: Calculated time and waiting time in days of the users.

USER	GROUP	Calculated Days	Waiting Time
qovzaxxr	polymat	16541.15	0.41
povhehea	poahh	10251.92	1.27
povwawaj	pojoo	9744.86	0.57
poaugbia	pojoo	9566.20	0.20
kiaolfeb	potss	4873.89	0.91
poagafrm	pojoo	4663.64	0.64
enxcacaj	egune	4396.63	0.69
povrucif	polymat	4184.44	0.23
poarloi	pojoo	4006.50	0.13
quainbea	qfjfg	3098.84	0.17
kixgrazr	potmb	3016.55	0.19
poairurm	polymat	2393.72	0.16
popporiv	poxlp	2045.37	0.09
povpisim	pomps	1701.63	0.01
enbzhzh	egune	1693.79	0.12
pobladej	poxlp	1685.86	0.06
bcpliolj	bgjbp	1582.65	1.85
pobfoese	poxlp	1576.81	0.11
dixsasam	pojoo	1191.63	0.08
pobmugoj	pomps	1175.51	0.14
poajejec	polymat	1081.38	0.04
pobrease	potmb	903.69	0.03
kibderua	qofcm	700.50	0.00
fabusgui	qfjfg	696.76	0.04
enbxilij	egune	692.76	0.27
faacalea	qfjfg	595.20	0.12
pobgrgrs	pomps	588.14	0.00
sckahnom	potmb	542.50	0.03
poanacuj	polymat	505.41	0.05
csazusej	nanogune	392.68	0.16
quxtaxxs	polymat	317.99	0.09
enxararo	egune	287.68	0.21
pobmabej	potmb	284.47	0.02
qopgobee	qocpn	274.01	0.02
kiasomal	qocpn	243.45	0.05
quamearx	qfila	237.35	0.00
qfpmamoh	qfila	214.89	0.04
qobzazag	qocpn	196.28	0.00
qfpesmai	qfila	179.55	0.00
nabkoxxn	nanogune	166.86	0.03
qobpamap	qocpn	131.43	0.01
poaganau	polymat	130.77	0.46
ciazuulm	pojoo	103.43	0.01
kiadadag	pojoo	99.63	0.08
qobcacea	qocpn	97.72	0.01
scavinam	poemg	97.64	0.15
popugurj	pojoo	96.11	1.25

qopcomof	qofcm	94.21	0.01
poblairo	poxlp	79.51	0.02
bgpmuhoi	bcnsc	72.48	0.02
quxlegoa	qfjfg	58.14	0.08
quxmarur	qfjfg	56.21	1.05
poarugua	pojju	50.00	0.00
quaduree	qfila	39.00	0.00
favcopee	qfjfg	28.10	0.00
poatealx	pojju	26.73	0.00
webogare	arinadm	22.96	0.01
qoprualg	qofpg	19.05	0.00
qubcaxxc	qfjfg	16.88	0.00
povmieci	pojju	7.26	0.00
kixsasal	pojju	5.41	0.00
qoapefuh	qocpn	3.97	0.00
bgbalurm	bgjbp	3.77	0.00
qfpbaprj	qfila	2.43	0.00
qfbleoni	qfjfg	0.96	0.00
bczabgab	casgi	0.29	0.01
oipgacaj	oijgc	0.27	0.00
poplopex	pojju	0.07	0.00
pobsisis	pomps	0.06	0.00
poazago	potmb	0.02	0.00
bixbrdem	gbdga	0.01	0.00
pobcacad	pojju	0.00	0.00
kibderua	qoabl	0.00	0.00

---

Table 2: Calculated time and waiting time in days of the groups.

GROUP	Calculated Days	Waiting Time
pojoo	29561.47	0.29
polymat	25154.84	0.17
poahh	10251.92	1.27
egune	7070.86	0.40
poxlp	5387.55	0.07
potss	4873.89	0.91
potmb	4747.23	0.06
qfjfg	4551.09	0.13
pomps	3465.33	0.02
bgjbp	1586.42	0.01
qocpn	946.86	0.02
qofcm	794.71	0.00
qfila	673.21	0.00
nanogune	559.54	0.12
poemg	97.64	0.15
bcnsc	72.48	0.02
arinadm	22.96	0.01
qofpg	19.05	0.00
casgi	0.29	0.01
oijgc	0.27	0.00
gbdga	0.01	0.00
qoabl	0.00	0.00

## Arina Data Storage Top Users

In the following graph we plot the users having more data in Arina in the last month. If you appear in this graph, we strongly encourage you to reduce your data in Arina.

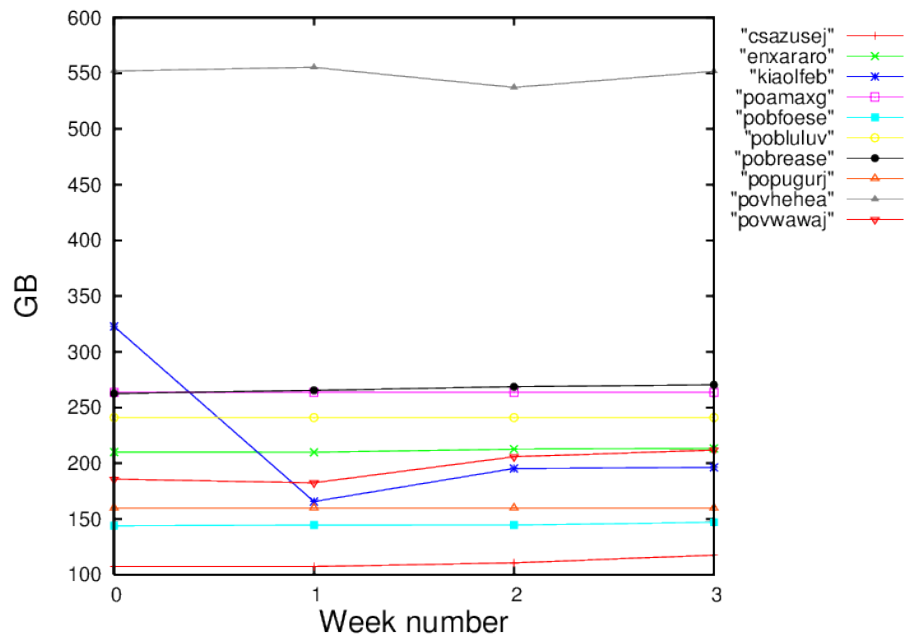


Figure 2: Storage evolution in the last month in GB.