

# Estadistics for January/2018

February 1, 2018

## Arina

In this brief document we show the usage of arina during January. This month 73659 computing days where used and the the average use of the cluster was 64 %. Since the first of December 142400 computing days where used and the the average use of the Arina cluster was 62 %. The figure shows the usage of Arina along the month. In the first table the usage of each user is shown. The third column indicates all the time each user has used for calculation during this month. The fourth column shows the average time that each job was waiting before the it started running, in days units. In the second table, the same data as in table 1 collected by group is shown.

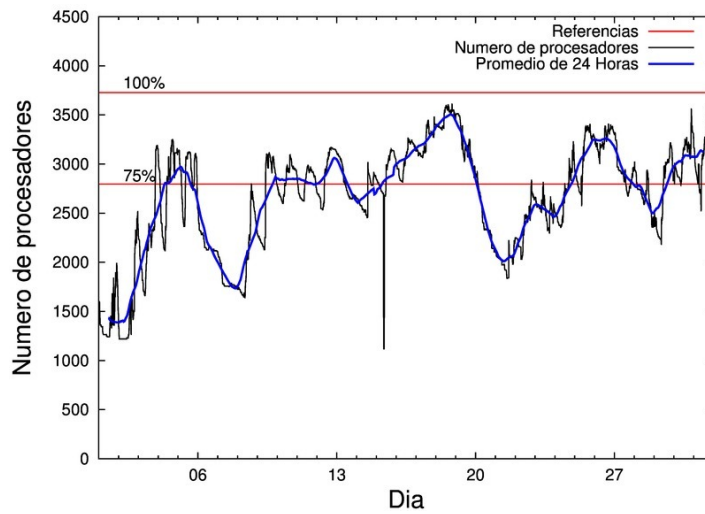


Figure 1: Cluster use. The blue line is a 24 hours average.

Table 1: Calculated time and waiting time in days of the users.

USER	GROUP	Calculated Days	Waiting Time
povhehea	poahh	14062.25	0.13
scavinam	poemg	11726.91	0.01
qovzaxxr	polymat	7015.18	0.19
poamaxg	polymat	5987.00	0.03
poairurm	polymat	4158.67	0.03
povrucif	polymat	3185.26	0.02
povpisim	pomps	2826.18	0.02
pobmugoj	pomps	2549.79	0.38
kiadadag	pojoo	2464.03	0.04
enblairo	egune	2035.62	0.06
enxcacaj	egune	1932.08	0.27
pobgrgrs	pomps	1745.29	0.00
pobmabej	potmb	1738.51	0.01
qfbleoni	qfjfg	1520.27	0.01
enxararo	egune	1394.48	0.09
fabusgui	qfjfg	1100.64	0.02
qopgobee	qocpn	1039.32	0.00
doxcarei	poemg	999.99	0.04
povwawaj	pojoo	750.85	0.02
kiaolfeb	potss	664.14	0.00
dixsasam	pojoo	585.52	0.01
poajejec	polymat	509.04	0.02
pobladej	poxlp	468.63	0.00
quxtaxxs	polymat	370.70	0.00
poalocad	polymat	290.29	0.00
quxmarur	qfjfg	235.30	0.31
kibderua	qofcm	231.71	0.01
kiasomal	qocpn	222.75	0.00
pobsisis	pomps	208.56	0.00
qobpamap	qocpn	188.23	0.00
quxlegoa	qfjfg	138.77	0.00
pmarkaide001	ggmer	131.32	0.02
bixbrdem	gbdga	131.04	0.01
quarafam	qfjfg	127.07	0.21
poarloi	pojoo	118.68	0.00
quaurhei	qfjfg	117.22	0.02
qoprualg	qofpg	85.09	0.00
enbzhzh	egune	81.91	0.02
wapgoesj	wakgg	73.44	0.01
juranga004	potmb	72.58	0.02
kiaurbao	poxlp	66.64	0.00
quamearx	qfila	52.13	0.00
qfjbaprj	qfila	40.91	0.00
iaretxabalet002	bgjal	39.51	0.00
qobsogax	jiads	37.49	0.05
poaszse	poxlp	36.96	0.01
qobzazag	qocpn	30.72	0.00

webogare	arinadm	14.54	0.01
anbgejin	anjbc	9.09	0.00
bgpmafea	bgjal	9.05	0.00
poadoodj	potmb	9.02	0.00
acplaing	jiads	8.83	0.00
pobfoese	poxlp	7.83	0.04
qopcomof	qofcm	5.75	0.00
quaduree	qfila	4.39	0.00
anpbicaj	anjbc	1.95	0.00
faavzae	qfila	1.83	0.00
favecvep	qfjfg	1.31	0.01
poarugua	pojju	1.19	0.00
qoaarecl	qofcm	0.40	0.00
ciazuulm	pojju	0.36	0.00
poatealx	pojju	0.23	0.00
pobmelat	arinadm	0.22	0.00
qfbloala	qfjfg	0.06	0.01
poaugbia	pojju	0.06	0.00
quainbea	qfjfg	0.04	0.00
poafesaa	pojju	0.04	0.00
qfpmamoh	qfila	0.00	0.00
bgpmuhoi	bcnsc	0.00	0.00

---

Table 2: Calculated time and waiting time in days of the groups.

GROUP	Calculated Days	Waiting Time
polymat	21516.13	0.02
poahh	14062.25	0.13
poemg	12726.90	0.01
pomps	7329.81	0.12
egune	5444.08	0.13
pojoo	3920.97	0.02
qfjfg	3240.68	0.04
potmb	1820.11	0.01
qocpn	1481.02	0.00
potss	664.14	0.00
poxlp	580.06	0.02
qofcm	237.86	0.01
ggmer	131.32	0.02
gbdga	131.04	0.01
qfila	99.26	0.00
qofpg	85.09	0.00
wakgg	73.44	0.01
bgjal	48.55	0.00
jiads	46.32	0.04
arinadm	14.75	0.01
anjbc	11.04	0.00
bcnsc	0.00	0.00

## Arina Data Storage Top Users

In the following graph we plot the users having more data in Arina in the last month. If you appear in this graph, we strongly encourage you to reduce your data in Arina.

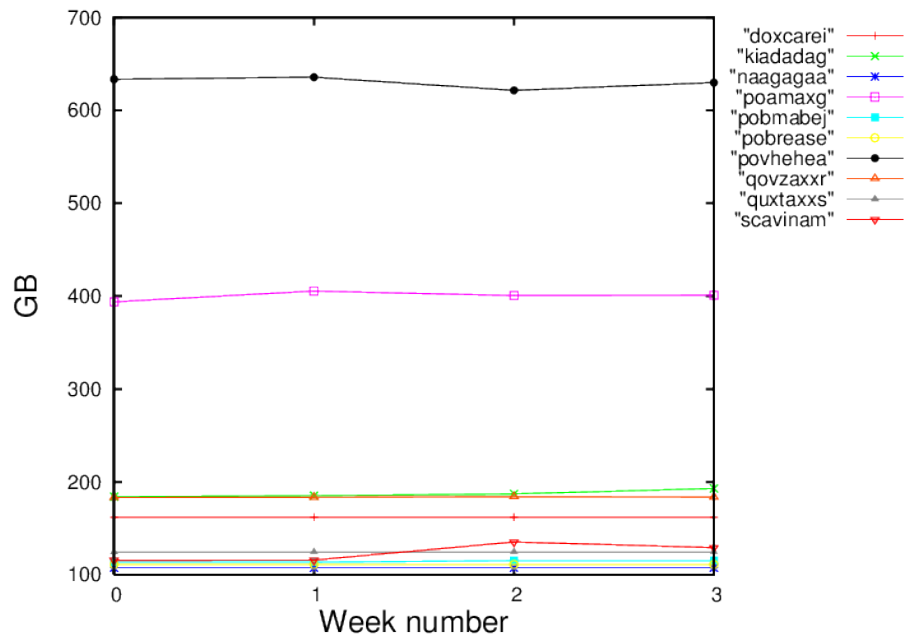


Figure 2: Storage evolution in the last month in GB.