

Estadistics for January/2015

February 1, 2015

Arina

In this brief document we show the usage of arina during January. This month 48415 computing days where used and the the average use of the cluster was 82 %. Since the first of December 97986 computing days where used and the the average use of the Arina cluster was 83 %. The figure shows the usage of Arina along the month. In the first table the usage of each user is shown. The third column indicates all the time each user has used for calculation during this month. The fourth column shows the average time that each job was waiting before the it started running, in days units. In the second table, the same data as in table 1 collected by group is shown.

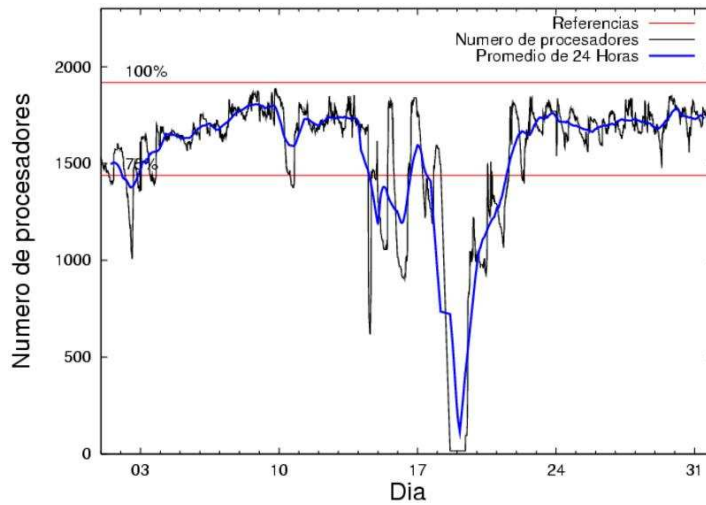


Figure 1: Cluster use. The blue line is a 24 hours average.

Table 1: Calculated time and waiting time in days of the users.

USER	GROUP	Calculated Days	Waiting Time
sckcorsf	nanogune	15083.11	5.17
povhehea	poahh	13107.84	1.37
kivpepor	kirpp	5577.82	0.26
poblairo	poxlp	2507.74	0.13
pobrease	potmb	1956.35	0.04
pobmugoj	pomps	1186.95	0.06
juranga004	potmb	1076.62	0.01
upetralanda001	wdaga	926.04	0.35
poalocad	polymat	828.53	0.02
qfbgoroj	qfjfg	642.49	0.02
qovzaxxr	polymat	631.43	0.01
qopgobee	qocpn	616.82	0.00
povrucif	polymat	562.77	0.01
csazusej	nanogune	552.69	0.14
pobgrgs	pomps	500.81	0.01
ciaazapj	poxlp	472.12	0.02
pobmelat	arinadm	461.89	0.07
pobrease	pojju	283.21	0.13
sckwankm	waars	266.74	0.02
fabusgui	qfjfg	247.53	0.33
webogare	arinadm	207.16	0.01
kibderua	qofcm	198.17	0.00
gaazareg	injss	117.43	0.02
poplopex	pojju	114.71	0.03
nanululr	nanogune	46.94	0.07
naaalcaa	nanopeji	44.98	0.05
poamaxg	polymat	44.92	0.04
quaurhei	qfjfg	44.89	0.01
kivpepor	waaap	43.67	0.08
wubcavaa	wuash	24.68	0.16
kixbebej	poxlp	16.25	0.01
wmpabuf	wmjcd	10.12	0.00
qfpmamoh	qfila	7.72	0.00
qfbbaprj	qfila	4.46	0.00
kixsasal	pojju	4.19	0.00
pobmabej	potmb	0.99	0.00
qfpesmai	qfila	0.46	0.01
qfbleoni	qfjfg	0.42	0.00
qopcomof	qofcm	0.14	0.00
pobromam	pomps	0.02	0.00
ggpagrom	ggmer	0.02	0.00
wabpepaa	waars	0.00	0.00
anpgaetk	anjbc	0.00	0.02

Table 2: Calculated time and waiting time in days of the groups.

GROUP	Calculated Days	Waiting Time
nanogune	15682.74	4.46
poahh	13107.84	1.37
kirpp	5577.82	0.26
potmb	3033.96	0.02
poxlp	2996.11	0.04
polymat	2067.64	0.02
pomps	1687.78	0.03
qfjfg	935.34	0.09
wdaga	926.04	0.35
arinadm	669.05	0.02
qocpn	616.82	0.00
pojju	402.11	0.07
waars	266.74	0.02
qofcm	198.31	0.00
injss	117.43	0.02
nanopeji	44.98	0.05
waaap	43.67	0.08
wuash	24.68	0.16
qfila	12.65	0.00
wmjcd	10.12	0.00
ggmer	0.02	0.00
anjbc	0.00	0.02

Arina Data Storage Top Users

In the following graph we plot the users having more data in Arina in the last month. If you appear in this graph, we strongly encourage you to reduce your data in Arina.

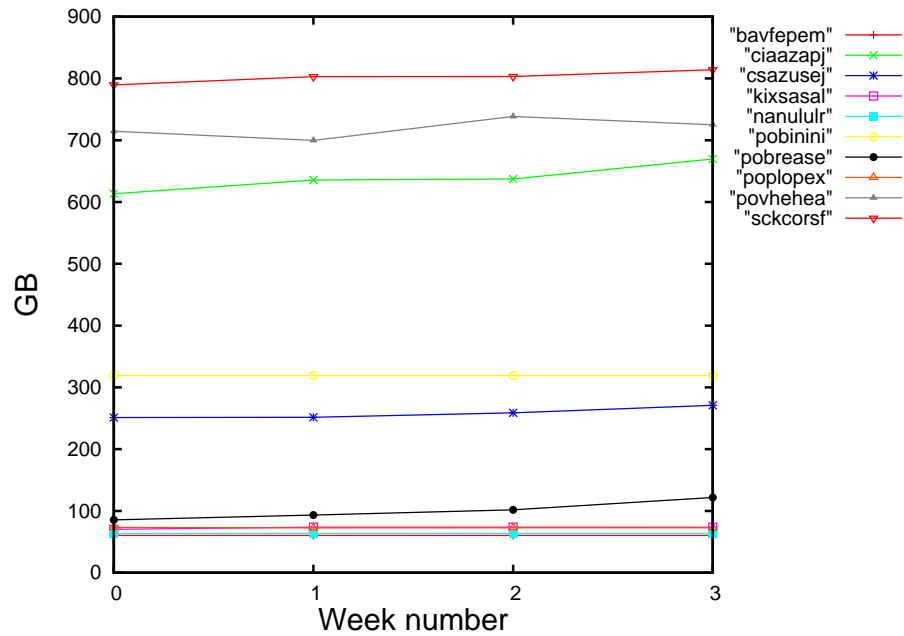


Figure 2: Storage evolution in the last month in GB.

Péndulo

This month 5872 computing days were used in **Péndulo** and the the average use of the cluster was 17 %. Since the first of December computing days were used and the the average use of the cluster was %. The figure shows the usage of Péndulo along the month. In the first table the usage of each user is shown. The third column indicates all the time each user has used for calculation during this month. The fourth column shows the average time that each job was waiting before the it started running, in days units. In the second table, the same data as in table 1 collected by group is shown.

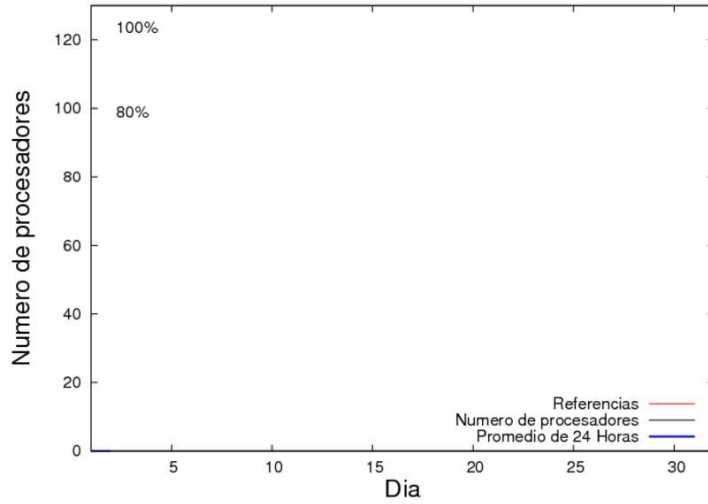


Figure 3: Cluster use. The blue line is a 24 hours average.

Table 3: Calculated time and waiting time in days of the users.

USER	GROUP	Calculated Days	Waiting Time
------	-------	-----------------	--------------

Table 4: Calculated time and waiting time in days of the groups.

GROUP	Calculated Days	Waiting Time
-------	-----------------	--------------