

# Estadistics for January/2014

February 10, 2014

## Arina

In this brief document we show the usage of arina during January. This month 28930 computing days were used and the the average use of the cluster was 71 %. Since the first of December 69234 computing days were used and the the average use of the Arina cluster was 83 %. The figure shows the usage of Arina along the month. In the first table the usage of each user is shown. The third column indicates all the time each user has used for calculation during this month. The fourth column shows the average time that each job was waiting before the it started running, in days units. In the second table, the same data as in table 1 collected by group is shown.

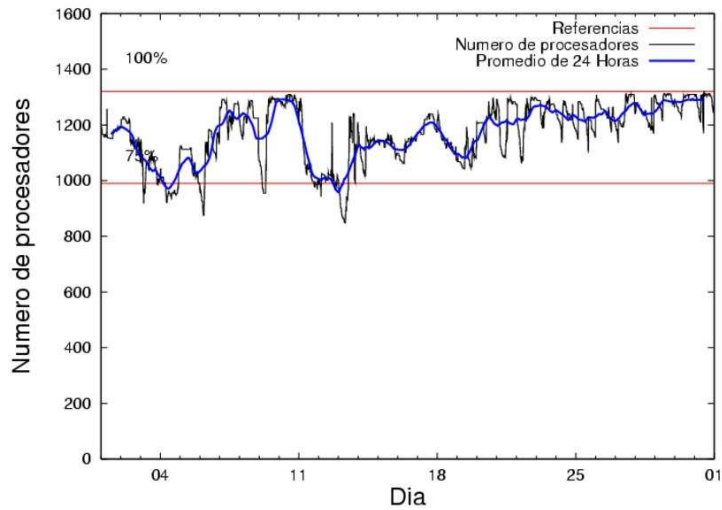


Figure 1: Cluster use. The blue line is a 24 hours average.

Table 1: Calculated time and waiting time in days of the users.

USER	GROUP	Calculated Days	Waiting Time
csazusej	nanogune	11729.74	0.28
povhehea	poahh	4701.26	0.33
favcopee	qfjfg	1881.18	1.10
ciaazapj	poxlp	1629.64	1.49
pobmugoj	pojuu	1496.73	0.63
popugurj	pojuu	1280.63	3.17
qopgobee	qocpn	643.49	0.10
sckcorsf	nanogune	599.57	2.09
povrucif	polymat	545.55	0.27
povpisim	pomps	478.43	0.58
pobrease	pojuu	470.02	0.50
povwawaj	pojuu	406.19	0.03
qovzaxxr	qorz	365.96	0.33
naamamap	nanogune	335.79	0.74
juranga004	potmb	272.46	0.13
pobrease	potss	263.14	0.13
qoprualg	qofpg	217.43	0.05
quxbabai	qfjfg	157.64	0.15
fabusgui	qfjfg	141.18	0.32
sgkluqun	pojuu	127.74	0.01
inpleibf	inffi	100.00	1.85
scpzuola	qorz	93.18	0.73
wmpabuf	wmjcd	87.18	0.12
bckmimoj	qfjfg	79.18	0.07
qobsalae	qambm	78.21	0.13
ekpvebaa	ekjgm	78.20	0.43
kibderua	qofcm	77.50	0.17
poplopex	pojuu	68.26	0.13
cixesesb	poxlp	65.81	0.26
kixsasal	pojuu	64.87	0.84
mapalmau	qtftp	55.63	0.76
wubcavaa	wuash	51.48	9.41
qoaarecl	qofcm	46.98	0.09
bavfepem	pojuu	37.83	0.14
webogare	arinadm	37.45	0.06
qoparaya	qofcm	34.89	0.00
favecvep	qfjfg	33.48	0.15
sckwankm	waars	22.16	0.38
pobinini	pojuu	18.18	0.12
naaalcaa	nanopeji	17.48	0.40
mtpmafel	mtgfa	11.60	0.39
wuppobam	wuebp	8.00	0.08
naxyiyib	nanogune	4.77	0.05
baxrarat	baeaa	4.47	0.08
qobconde	qofcm	3.82	0.08
qfpesmai	qfila	2.64	0.05
pobgrgrs	pojuu	2.37	0.11

pobmabej	pojuu	0.22	0.10
acpmeala	ccjla	0.00	0.00

Table 2: Calculated time and waiting time in days of the groups.

GROUP	Calculated Days	Waiting Time
nanogune	12669.88	0.53
poahh	4701.26	0.33
pojuu	3973.03	0.45
qfjfg	2292.66	0.87
poxlp	1695.45	1.21
qocpn	643.49	0.10
polymat	545.55	0.27
pomps	478.43	0.58
qorz	459.14	0.33
potmb	272.46	0.13
potss	263.14	0.13
qofpg	217.43	0.05
qofcm	163.18	0.13
inpli	100.00	1.85
wmjcd	87.18	0.12
qambm	78.21	0.13
ekjgm	78.20	0.43
qtftp	55.63	0.76
wuash	51.48	9.41
arinadm	37.45	0.06
waars	22.16	0.38
nanopeji	17.48	0.40
mtgfa	11.60	0.39
wuebp	8.00	0.08
baeaa	4.47	0.08
qfila	2.64	0.05
ccjla	0.00	0.00

## Arina Data Storage Top Users

In the following graph we plot the users having more data in Arina in the last month. If you appear in this graph, we strongly encourage you to reduce your data in Arina.

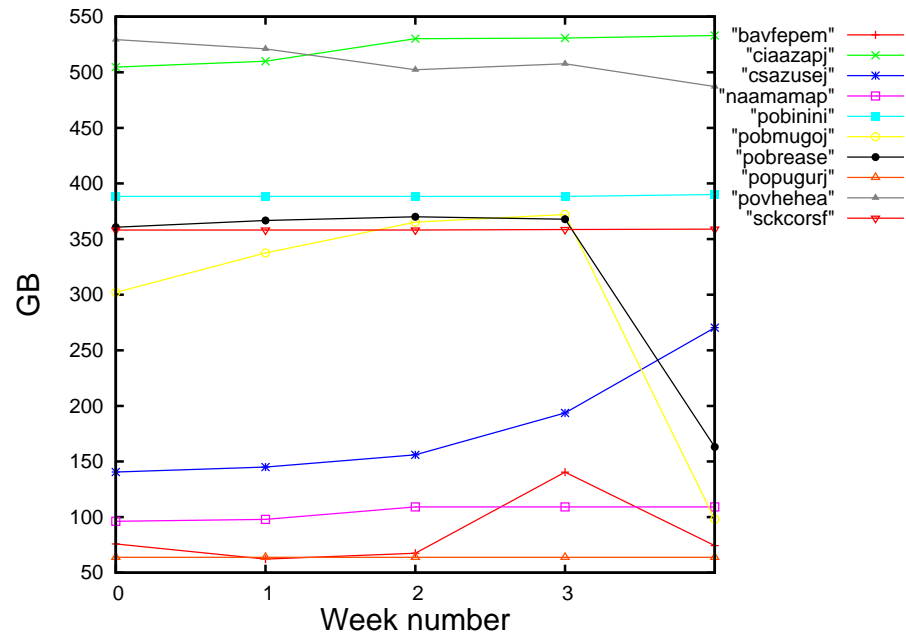


Figure 2: Storage evolution in the last month in GB.

## Péndulo

This month 0 computing days were used in **Péndulo** and the the average use of the cluster was 0 %. Since the first of December 592 computing days were used and the the average use of the cluster was 14 %. The figure shows the usage of Péndulo along the month. In the first table the usage of each user is shown. The third column indicates all the time each user has used for calculation during this month. The fourth column shows the average time that each job was waiting before the it started running, in days units. In the second table, the same data as in table 1 collected by group is shown.

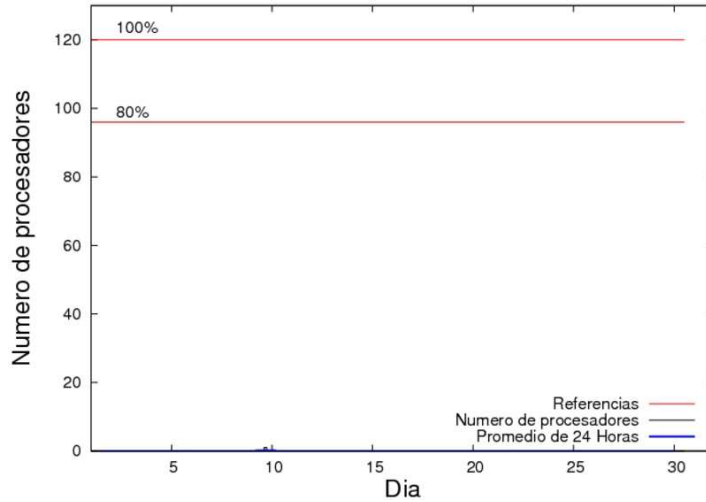


Figure 3: Cluster use. The blue line is a 24 hours average.

Table 3: Calculated time and waiting time in days of the users.

USER	GROUP	Calculated Days	Waiting Time
mtpmafel	mtgfa	0.13	0.00

Table 4: Calculated time and waiting time in days of the groups.

GROUP	Calculated Days	Waiting Time
mtgfa	0.13	0.00