

Estadistics for January/2013

February 5, 2013

Arina

In this brief document we show the usage of arina during January. This month 31917 computing days were used and the the average use of the cluster was 76 %. Since the first of December 63420 computing days were used and the the average use of the Arina cluster was 75 %. The figure shows the usage of Arina along the month. In the first table the usage of each user is shown. The third column indicates all the time each user has used for calculation during this month. The fourth column shows the average time that each job was waiting before the it started running, in days units. In the second table, the same data as in table 1 collected by group is shown.

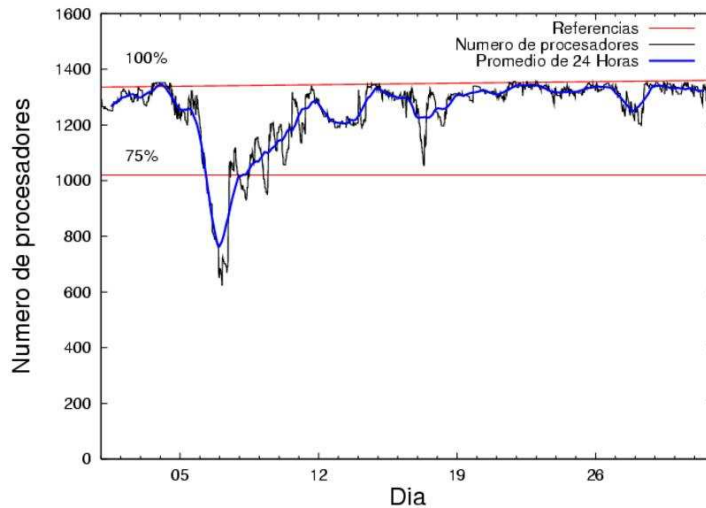


Figure 1: Cluster use. The blue line is a 24 hours average.

Table 1: Calculated time and waiting time in days of the users.

USER	GROUP	Calculated Days	Waiting Time
povhehea	poahh	5780.87	0.54
csazusej	nanogune	4854.38	1.41
sckcorsf	nanogune	4115.06	0.33
povwawaj	pojuu	3776.81	0.92
scpzuola	qorzz	2758.90	0.78
favcopee	qfjfg	2270.65	2.47
pobrease	potss	1423.90	0.32
ciaazapj	poxlp	1340.00	0.29
qoaarecl	qofcm	855.19	0.09
kibmeheg	pojuu	848.88	0.07
kibderua	qofcm	605.31	0.19
qopgobee	qocpn	459.22	0.10
qoparaya	qofcm	378.48	0.16
pobgrgrs	pojuu	293.59	0.15
popugurj	pojuu	287.28	0.08
pobmugoj	pojuu	240.92	0.15
pobinini	pojuu	232.13	0.06
bckmimoj	qfjfg	217.56	0.14
cixesesb	poxlp	210.93	0.18
iapgarue	iaegr	175.89	0.60
poplopex	pojuu	171.49	0.03
pobrease	pojuu	143.99	0.16
webogare	arinadm	131.72	0.17
quxbabai	qfjfg	90.92	0.11
povrucif	poxlp	52.99	0.02
waxpoxxy	waars	48.01	0.00
juranga004	potmb	44.44	0.01
bcklogoi	infi	30.03	0.14
sgkluqun	pojuu	28.10	0.07
qopcomof	qofcm	13.59	0.08
qfpmamoh	qfila	6.86	0.23
wuppobam	wuebp	6.73	0.03
quxlegoa	qfjfg	5.95	0.61
qoprualg	qofpg	4.54	0.03
pobmelat	arinadm	4.46	0.00
acblonou	ccjla	3.14	0.05
qfpesmai	qfila	2.45	0.03
nabzezem	nanogune	1.10	0.93
poblairo	poxlp	0.28	0.00
mapalmau	qtftp	0.07	0.01
qfpgapae	qfegp	0.06	0.29
sckwankm	waars	0.00	0.04
pobmabej	pojuu	0.00	0.00
bcpfimaa	mimam	0.00	0.07

Table 2: Calculated time and waiting time in days of the groups.

GROUP	Calculated Days	Waiting Time
nanogune	8970.54	1.11
pojoo	6023.19	0.31
poahh	5780.87	0.54
qorzz	2758.90	0.78
qjfg	2585.08	1.48
qofcm	1852.56	0.11
poxlp	1604.19	0.16
potss	1423.90	0.32
qocpn	459.22	0.10
iaegr	175.89	0.60
arinadm	136.18	0.06
waars	48.01	0.01
potmb	44.44	0.01
infi	30.03	0.14
qfila	9.31	0.07
wuebp	6.73	0.03
qofpg	4.54	0.03
ccjla	3.14	0.05
qtftp	0.07	0.01
qfegp	0.06	0.29
mimam	0.00	0.07

Arina Data Storage Top Users

In the following graph we plot the users having more data in Arina in the last month. If you appear in this graph, we strongly encourage you to reduce your data in Arina.

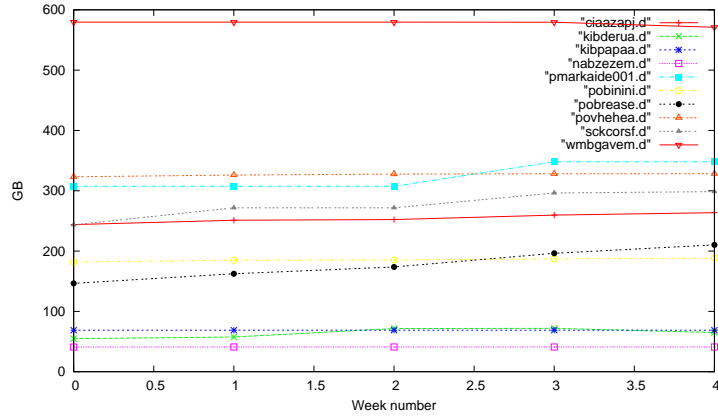


Figure 2: Storage evolution in the last month (in GB).

Péndulo

This month 324 computing days were used in **Péndulo** and the the average use of the cluster was 15 %. Since the first of December 1056 computing days were used and the the average use of the cluster was 21 %. The figure shows the usage of Péndulo along the month. In the first table the usage of each user is shown. The third column indicates all the time each user has used for calculation during this month. The fourth column shows the average time that each job was waiting before the it started running, in days units. In the second table, the same data as in table 1 collected by group is shown.

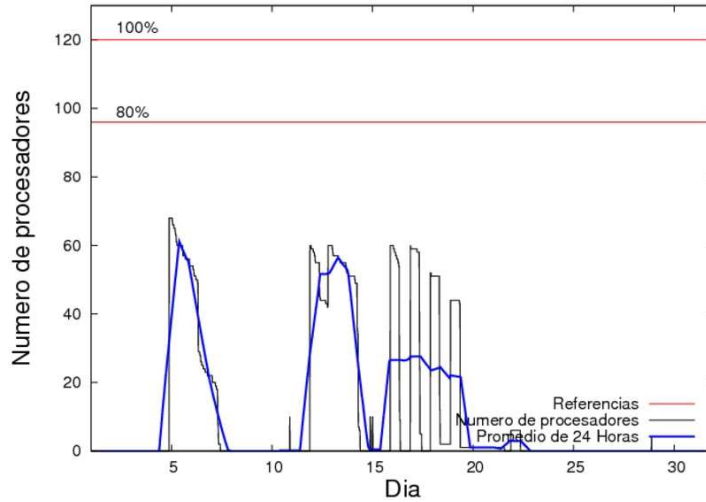


Figure 3: Cluster use. The blue line is a 24 hours average.

Table 3: Calculated time and waiting time in days of the users.

USER	GROUP	Calculated Days	Waiting Time
jtpanlod	jtjob	282.46	5.18
qfpgapae	qfegp	41.46	0.71
webogare	arinadm	0.47	0.25

Table 4: Calculated time and waiting time in days of the groups.

GROUP	Calculated Days	Waiting Time
jtjob	282.46	5.18
qfegp	41.46	0.71
arinadm	0.47	0.25

Ikerbasque machine

The service has access to 208 xeon cores in this machine, which are older than Arina's ones. The codes of only few big users are maintained there to optimize the maintenance time. This month 4549 computing days were used in **Ikerbasque** machine and the the average use of the cluster was 71 %. Since the first of December 9969 computing days were used and the the average use of the cluster was 77 %. In the first table the usage of each user is shown. The third column indicates all the time each user has used for calculation during this month. The fourth column shows the average time that each job was waiting before the it started running, in days units. In the second table, the same data as in table 1 collected by group is shown.

Table 5: Calculated time and waiting time in days of the users.

USER	GROUP	Calculated Days	Waiting Time
scpzuola	qorzz	3902.85	0.00
pobmugoj	pojju	539.81	0.00
pobmelat	arinadm	107.81	0.00

Table 6: Calculated time and waiting time in days of the groups.

GROUP	Calculated Days	Waiting Time
qorzz	3902.85	0.00
pojju	539.81	0.00
arinadm	107.81	0.0