

Estadistics for January/2012

February 16, 2012

Arina

In this brief document we show the usage of arina during January. This month 21412 computing days where used and the the average use of the cluster was 49 %. Since the first of December 45469 computing days where used and the the average use of the cluster was 52 %. The figure shows the usage of Arina along the month. In the first table the usage of each user is shown. The third column indicates all the time each user has used for calculation during this month. The fourth column shows the average time that each job was waiting before the it started running, in days units. In the second table, the same data as in table 1 collected by group is shown.

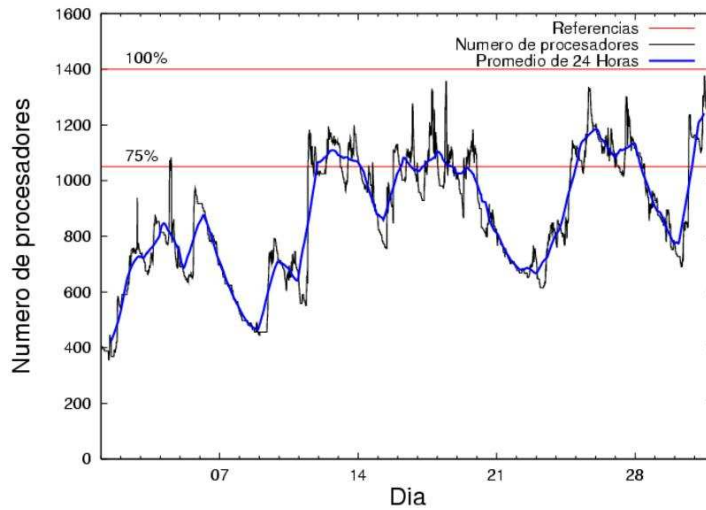


Figure 1: Cluster use. The blue line is a 24 hours average.

Table 1: Calculated time and waiting time in days of the users.

USER	GROUP	Calculated Days	Waiting Time
povhehea	poahh	3339.20	0.02
kibpapaa	qorzz	2716.98	0.01
bcpfimaa	mimam	2582.32	0.00
qfbleoni	qfjfg	1586.03	0.01
favcopee	qfjfg	1328.69	0.12
pobrease	pojuu	1023.93	0.06
qoaarecl	qofcm	968.47	0.00
cixesesb	poxlp	958.18	0.00
pobmugoj	pojuu	879.09	0.00
kibderua	qofcm	724.92	0.03
kibmeheg	pojuu	685.87	0.03
quxlegoa	qfjfg	667.06	0.00
pobrease	potss	561.87	0.02
wmbgavem	waets	488.72	0.04
acblonou	ccjla	397.63	0.01
qoparaya	qofcm	369.71	0.00
qopgobee	qocpn	319.82	0.00
popugurj	pojuu	308.76	0.00
mapalmau	magps	278.82	0.00
ciaazapj	poxlp	276.82	0.00
pobgrgrs	pojuu	256.38	0.00
povrucif	poxlp	207.53	0.00
waptctce	waets	147.22	0.00
wmpetali	wdaga	48.27	0.01
iapgarue	iaegr	44.85	0.00
webogare	arinadm	41.53	0.00
poxmafie	potss	40.65	0.00
bcpremae	bcdbu	34.61	0.00
waxpoxxy	waars	28.85	0.01
favecvcp	qfjfg	19.53	0.16
povwawaj	pojuu	16.32	0.00
poplopex	pojuu	11.88	0.00
pobmelat	arinadm	11.29	0.00
qopcomof	qofcm	10.02	0.00
pobmabej	pojuu	7.22	0.00
kivremey	qpjag	6.25	0.46
qfbloala	qfala	4.41	0.00
qoprualg	qofpg	4.15	0.00
ggpmoasi	ggmer	2.69	0.00
qfpbapri	qfila	2.25	0.00
upetralanda001	wdaga	1.39	0.00
qfpesmai	qfila	0.95	0.00
pobinini	pojuu	0.48	0.00
wapgoesj	wakgg	0.28	0.00
qfpmamoh	qfila	0.13	0.00
scpzuola	qorzz	0.12	0.01
mapmemam	qtftp	0.11	0.00

lebtobaa	leaie	0.03	0.01
----------	-------	------	------

Table 2: Calculated time and waiting time in days of the groups.

GROUP	Calculated Days	Waiting Time
qfjfg	3601.31	0.02
poahh	3339.20	0.02
pojuu	3189.93	0.02
qorzz	2717.11	0.01
mimam	2582.32	0.00
qofcm	2073.12	0.02
poxlp	1442.52	0.00
waets	635.94	0.03
potss	602.52	0.02
ccjla	397.63	0.01
qocpn	319.82	0.00
magps	278.82	0.00
arinadm	52.82	0.00
wdaga	49.66	0.01
iaegr	44.85	0.00
bcdbu	34.61	0.00
waars	28.85	0.01
qpjag	6.25	0.46
qfala	4.41	0.00
qofpg	4.15	0.00
qfila	3.32	0.00
ggmer	2.69	0.00
wakgg	0.28	0.00
qtftp	0.11	0.00
leaie	0.03	0.01

Pendolo

This month 206 computing days were used in **Pendolo** and the the average use of the cluster was 9 %. Since the first of December 206 computing days were used and the the average use of the cluster was 4 %. The figure shows the usage of Pendolo along the month. In the first table the usage of each user is shown. The third column indicates all the time each user has used for calculation during this month. The fourth column shows the average time that each job was waiting before the it started running, in days units. In the second table, the same data as in table 1 collected by group is shown.

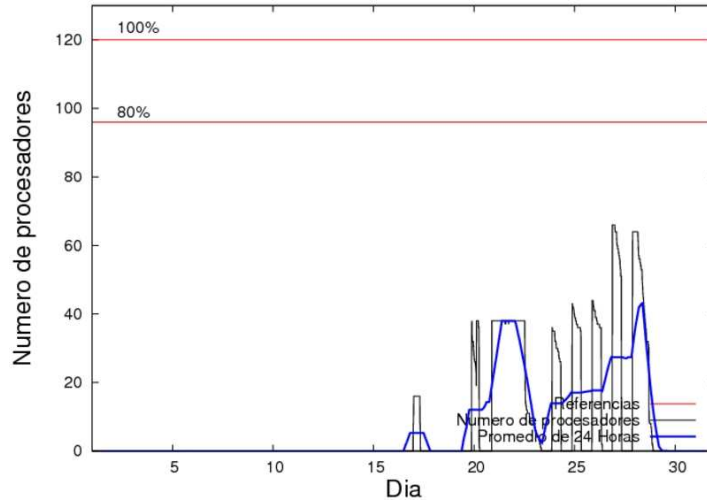


Figure 2: Cluster use. The blue line is a 24 hours average.

Table 3: Calculated time and waiting time in days of the users.

USER	GROUP	Calculated Days	Waiting Time
jtppragg	jtjob	201.09	0.63
webogare	arinadm	5.41	0.00

Table 4: Calculated time and waiting time in days of the groups.

GROUP	Calculated Days	Waiting Time
jtjob	201.09	0.63
arinadm	5.41	0.00

Ikerbasque machine

The service has access to 208 xeon cores in this machine, which are older than Arina's ones. The codes of only few big users are maintained there to optimize the maintenance time. This month 1752 computing days were used in **Ikerbasque** machine and the the average use of the cluster was 27 %. Since the first of December 1752 computing days were used and the the average use of the cluster was 13 %. In the first table the usage of each user is shown. The third column indicates all the time each user has used for calculation during this month. The fourth column shows the average time that each job was waiting before the it started running, in days units. In the second table, the same data as in table 1 collected by group is shown.

Table 5: Calculated time and waiting time in days of the users.

USER	GROUP	Calculated Days	Waiting Time
pobmugoj	pojoo	1542.09	0.43
kibpapaa	qorzz	165.26	0.01
pobrease	potss	44.36	0.00
pobmelat	arinadm	0.28	0.00

Table 6: Calculated time and waiting time in days of the groups.

GROUP	Calculated Days	Waiting Time
pojoo	1542.09	0.43
qorzz	165.26	0.01
potss	44.36	0.00
arinadm	0.28	0.00